





Prepare to ELEVATE

Engage Leadership through Employment, Validation, and Advancing Transformation & Equity (ELEVATE)





Disclaimer

ELEVATE is supported by the Health Resources and Services Administration (HRSA) of the U.S. Department of Health and Human Services (HHS) as part of a financial assistance award totaling \$796,749.00 with 100 percentage funded by HRSA/HHS. The contents are those of the author(s) and do not necessarily represent the official views of, nor an endorsement, by HRSA/HHS, or the U.S. Government.



Partners



Facilitators



Lauren Miller
(She/her/ella)



Robbie Floyd
(He/him)



Michelle Dawson
(She/her)



Reginald Warren
(He/him)

Zoom Keeping



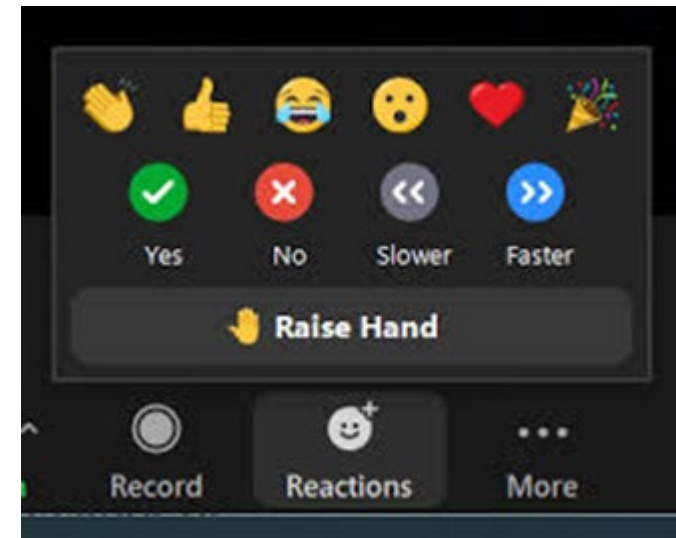
Recording will be available on targethiv.com



Participation:
Please use Zoom Reaction
Features including Raise Hand



Audio:
Please mute when not speaking





Learning Objectives

By the end of the webinar, participants will be able to:

- Understand the goals and objectives of the ELEVATE program
- Know who should apply to the ELEVATE program
- Know how to apply to participate in the ELEVATE program

Welcome

Engage Leadership through Employment, Validation, and Advancing Transformation & Equity (**ELEVATE**)

The purpose of the ELEVATE program is to build the capacity of Persons with HIV(PWH) to be meaningfully involved in the planning, delivering, and improving of Ryan White HIV/AIDS Program (RWHAP) services.



ELEVATE - Program Overview (Slide 1 of 8)

History

- **ELEVATE** is founded upon the Denver Principles.
- **ELEVATE** builds on the achievements of HRSA and RWHAP training programs and incorporates their features into a single project.



It began here: **Nothing about us without us**

Denver Principles 1983

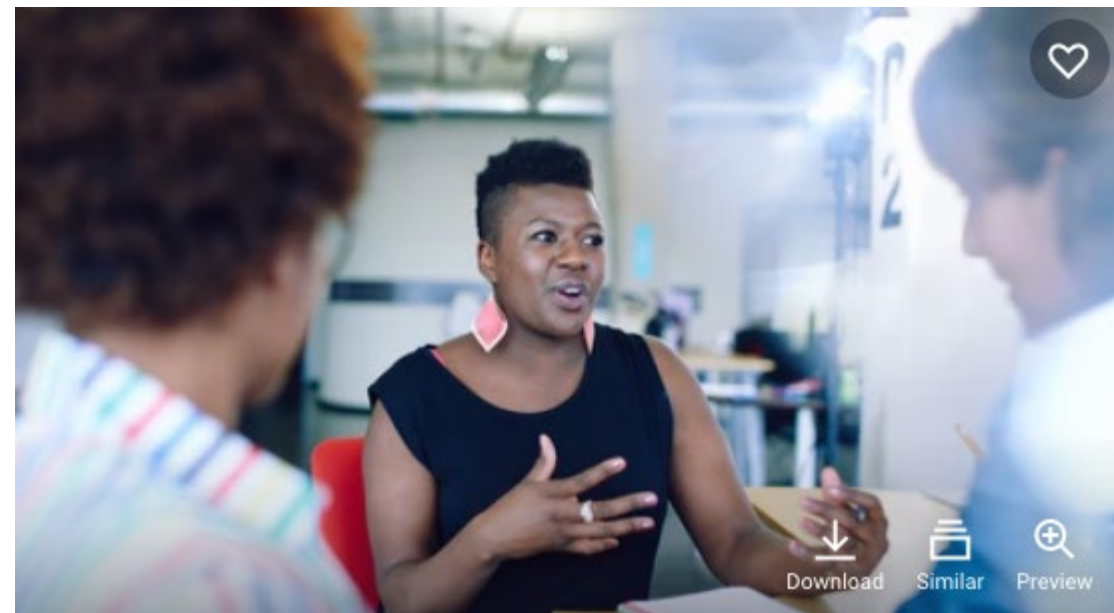
We condemn attempts to label us as “victims”, a term which implies defeat, and we are only occasionally “patients”, a term which implies passivity, helplessness and dependence upon the care of others. We are “People with AIDS”



ELEVATE -Program Overview (Slide 2 of 8)

Purpose

- To build the capacity of Persons with HIV (PWH) to be meaningfully involved in the planning, delivering, and improving of Ryan White HIV/AIDS Program (RWHAP) services.
- **ELEVATE** will address needs in the workforce recruitment, development, and advancement for PWH in populations 50+, Young Black Men, T/GNC, Latinx, and the recovery community.



ELEVATE-Program Overview (Slide 3 of 8)

ELEVATE aims to engage at least 620 participants in workshops and webinars tailored to support PWH with three engagement opportunities:

- Leadership training
- Strengths-based coaching
- Web-based products and services





ELEVATE-Program Overview (Slide 4 of 8)

ELEVATE aims to engage at least 620 participants in workshops and webinars tailored to support PWH with three engagement opportunities:

Leadership Training

for technical and culturally responsive services.

Including:

- Planning Councils/Planning Bodies (PC/PB)
- Consumer Advisory Boards
- Clinic quality management teams
- Community Health Workers
- Peer navigators
- Patient Navigators
- Peer Outreach workers



Strengths-Based Coaching



Web-Based Products and Services



Increase in number and capacity of PWH meaningfully involved in all aspects of HIV related work

ELEVATE-Program Overview (Slide 5 of 8)

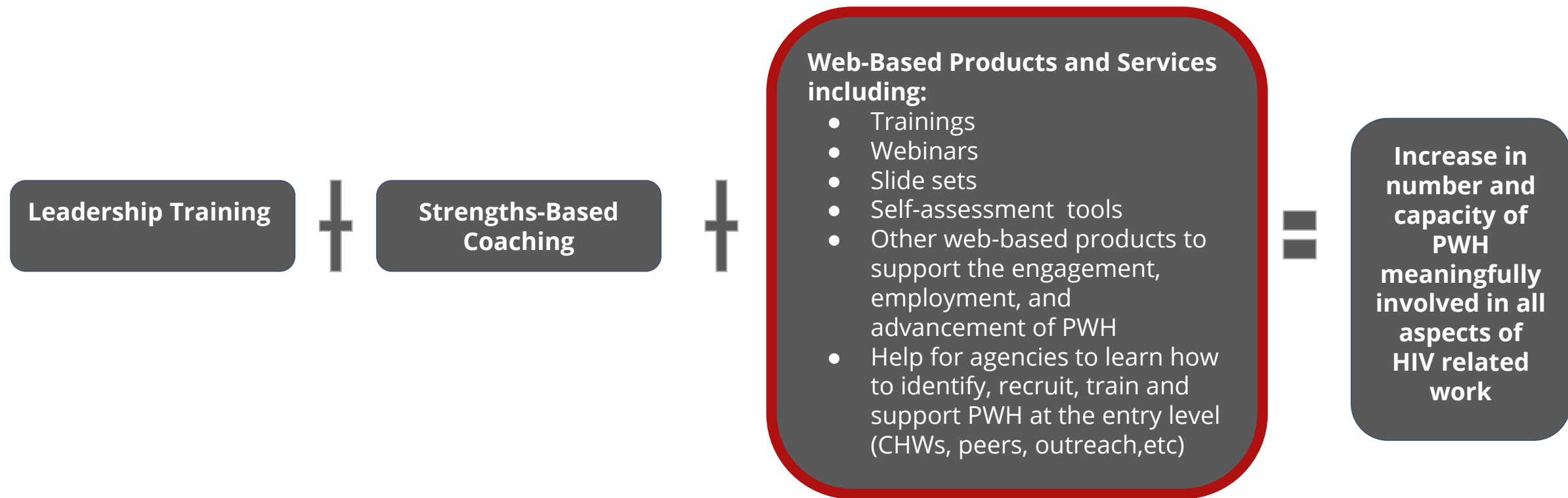
ELEVATE aims to engage at least 620 participants in workshops and webinars tailored to support PWH with three engagement opportunities:





ELEVATE-Program Overview (Slide 6 of 8)

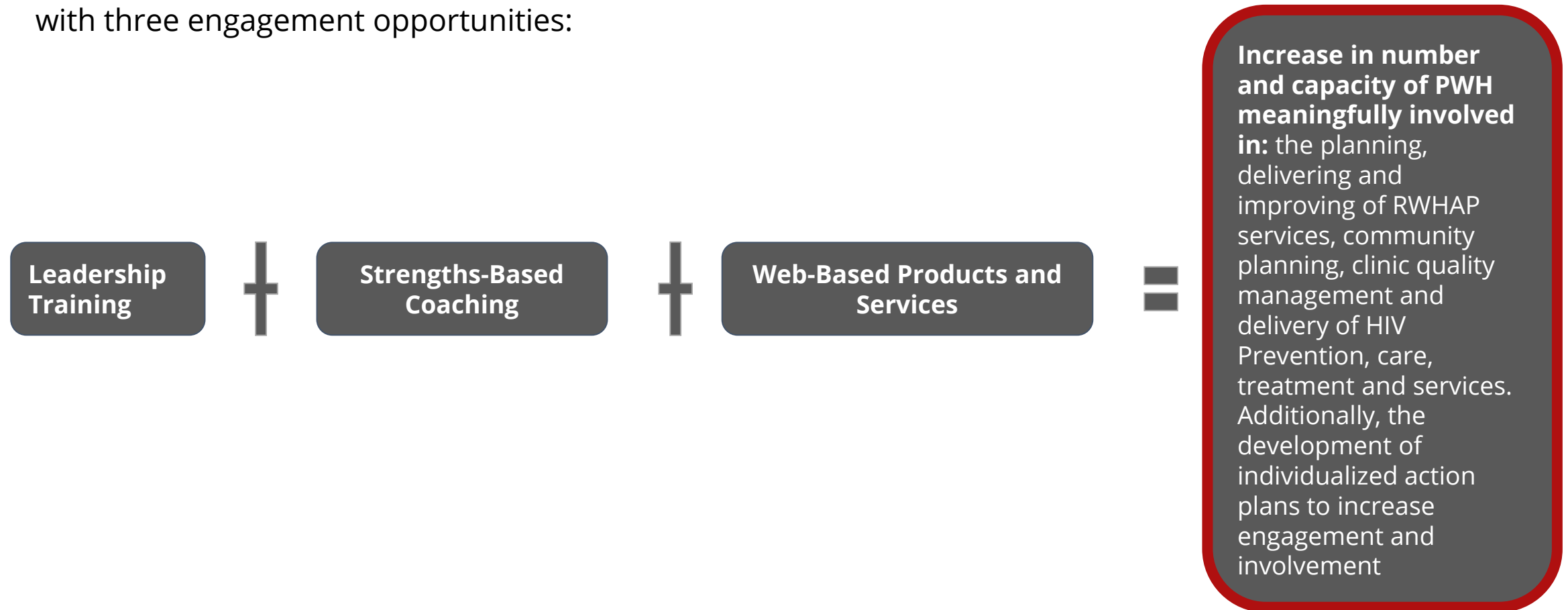
ELEVATE aims to engage at least 620 participants in workshops and webinars tailored to PWH with three engagement opportunities:





ELEVATE-Program Overview (Slide 7 of 8)

ELEVATE aims to engage at least 620 participants in workshops and webinars tailored to support PWH with three engagement opportunities:



ELEVATE-Program Overview (Slide 8 of 8)

ELEVATE will offer participants 3 program Tracks:

PWH engaged in **Planning Services**

- RWHAP Part A PC/PB
- RWHAP Part B PB

PWH engaged in **Delivering Services**

- Community Health Workers
- Patient or Client Navigators
- Linkage to Care Workers

PWH engaged in **Improving Services**

- RWHAP Part C/D Advisory Boards
- RWAHP Part C/D Clinical Quality Management Teams and Committees
- RWHAP Part A/B Subrecipient Clinical Quality Management Teams and Committees
- RWHAP Part A/B Subrecipient and/or Part C/D Recipient Board Member





ELEVATE - Day At A Glance

Day 1

PWH Systems-Level Leadership

- The Ryan White HIV/AIDS Program
- National HIV/AIDS Strategy (revised as HIV National Strategic Plan)
- Structures of Involvement
- PWH Leadership

Day 2

HIV Prevention, Care, & Treatment

- HIV 101 including PrEP, PEP & TasP
- The HIV Life Cycle and Medications
- Adherence and overcoming Barriers
- HIV and Comorbidities
- Social Determinants of Health

Day 3

Public Health Tools & Skills

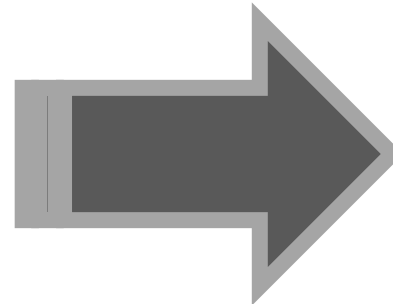
- Health Literacy
- Introduction to Data
- Data Terminology
- Performance Measurement
- Charts & Graphs

ELEVATE - Day At A Glance Cont'd

Day 4

Program Track Breakout

- Planning Services
 - PC/PB responsibility
 - Needs Assessments
- Delivering Services
 - Documentation Skills
 - Care Planning & Case Management
- Improving Services
 - Quality Improvement Principles & Strategies
 - Quality Improvement Team Member Roles & Functions



Day 5

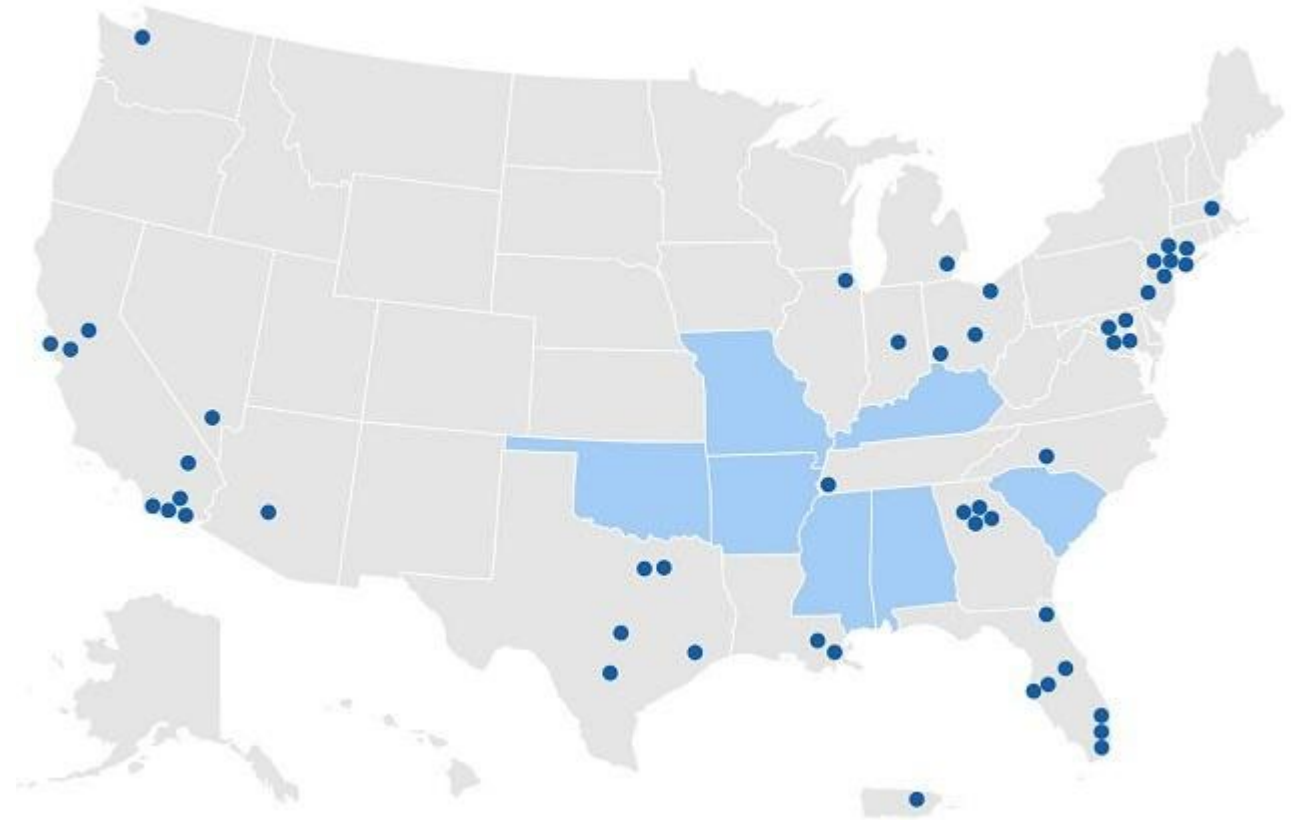
Creating Change

- Communicating as a part of a team
- Facilitation Skills
- Managing Stigma & Trauma as PWH Leaders
- Personalized Action Plan based on Program Track
- Action Planning Report-Out

ELEVATE - Eligibility & Expectations

To participate in the ELEVATE Program one must meet the following criteria:

- Persons with HIV (PWH) aligned with a RWHAP Recipient or Subrecipient and one of the following:
 1. Employed by RWHAP
 2. Members of PC/PB
 3. Members of Consumer, Community, & Patient Advisory Boards
 4. Directors from the Boards of RWHAP
 5. Members of Clinical Quality Management Teams or Committees
 6. Other PLHIV aligned with a RWHAP seeking greater involvement



ELEVATE - Expectations Cont'd

All selected participants must be available to:

- Attend all training sessions. Training will be held over a period of 5 days.
- Meet with strengths-based coach once per month for 9-month period.



ELEVATE - Application

Application is OPEN NOW!

APPLY TODAY!!!

To apply, please complete the application form located here [Link for application](#) in the chatbox and on TargetHIV.com





ELEVATE - Next Steps

- All Interested applicants should email elevate@nmac.org or contact lmiller@nmac.org apply to ELEVATE. Feel free to share this opportunity with your colleagues and friends!
- ELEVATE will host a webinar entitled, “Preparing for Employment in HIV Services”. This webinar is open to anyone interested in attending. To register, visit TargetHIV.com/ELEVATE.



Get in Touch



Charles Shazor Jr.
(Pronouns: he, him, his)
Manager
The Center to End the Epidemics
cshazor@nmac.org

Lauren Miller
(Pronouns: she, her, hers)
Health Equity Program Coordinator
The Center to End the Epidemics
lmiller@nmac.org



Thank You!

Please complete the “Prepare to ELEVATE” webinar evaluation to be received in your email following this meeting.