

**LEAD AGENCY:** CITY OF PASADENA

**PARTNER AGENCIES:**

Union Station Homeless Services  
Foothill Workforce Development

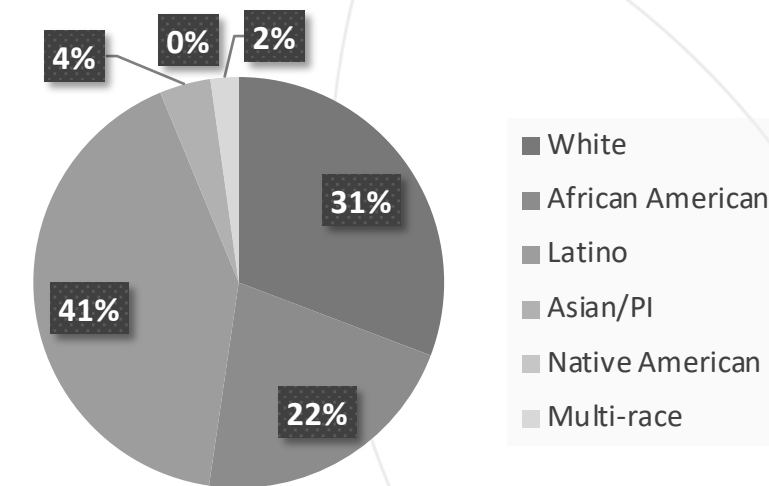
## Introduction

### Geographic Landscape

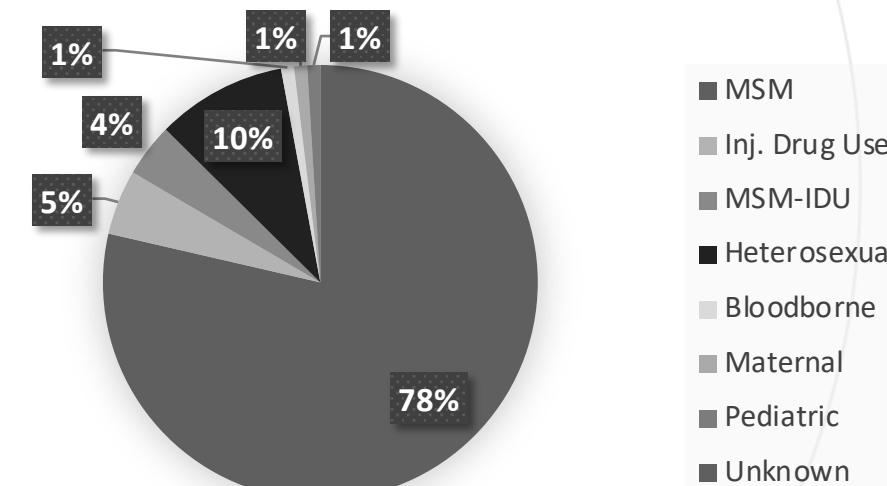
#### Brief description of local HIV epidemic

Pasadena is located in Los Angeles County, which spans over 4,000 square miles and includes 88 cities, 26 health districts, and a mix of urban, suburban, and rural areas. HIV incidence in LA County is highest among MSM of color, young MSM (YMSM) ages 18 to 29, and transgender persons.

#### HIV Prevalence by Race/Ethnicity



#### HIV Prevalence by Risk



**60%**

Viral suppression

**7.4%**

homeless or unstably housed

**86%**

diagnosed

### The Challenge

Locating affordable housing, especially for undocumented individuals. While there are multiple new developments in Pasadena, many developers opt to pay a penalty in lieu of having affordable housing units.

Encouraging long-term survivors of HIV and/or homelessness to seek employment. Needing to provide up-to-date guidance and education regarding balance between employment vs. benefits.

Finding employment opportunities for undocumented individuals.

### Key Partnerships

### Focus population

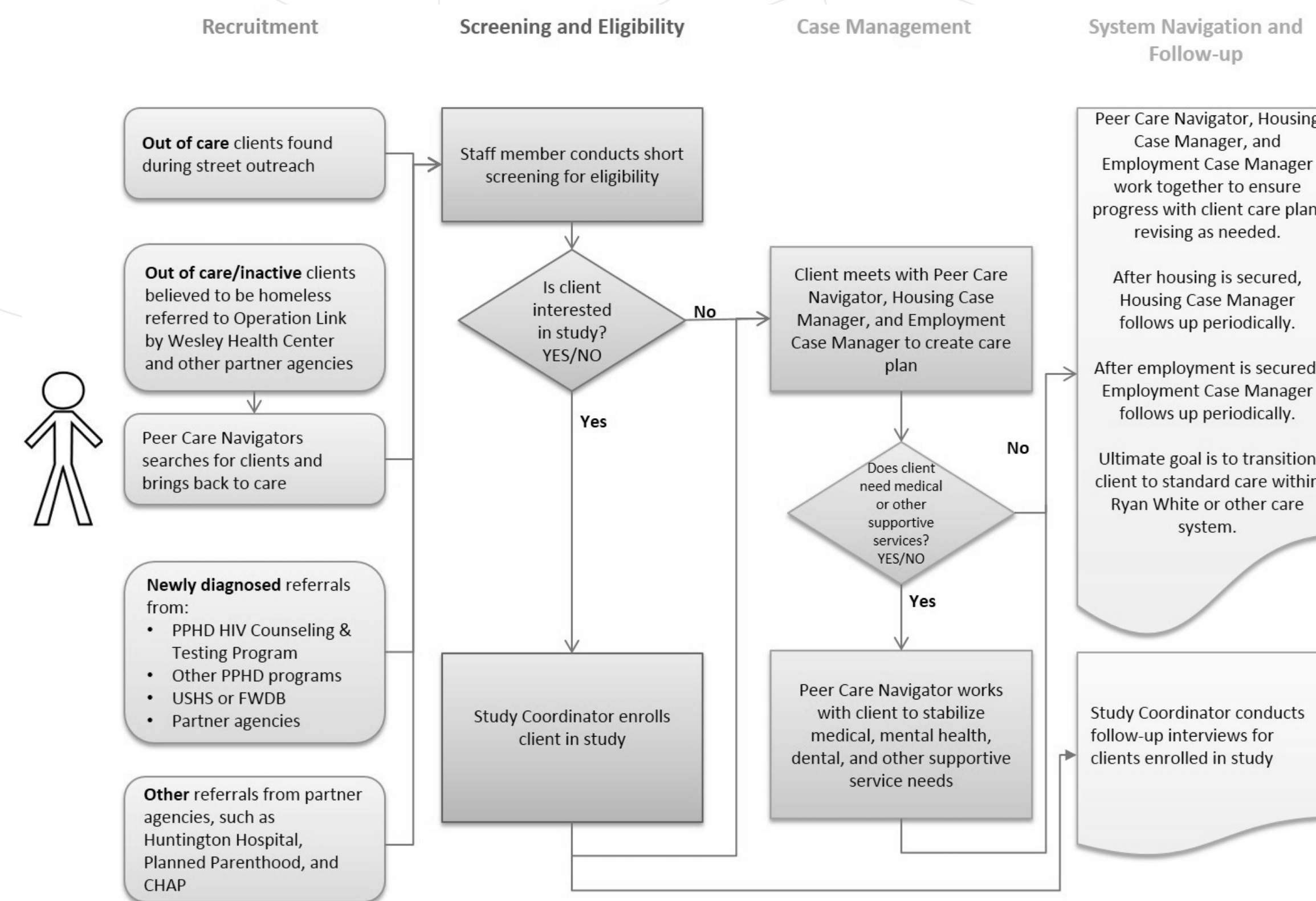
**wesley** Health Centers (FQHC, HIV Specialty Medical/Dental/Mental Health Care)

**CC** ChapCare (FQHC)

**PASADENA** City of Pasadena Human Services & Recreation, Library, Fire, and Police Departments

Racial and ethnic minority, low-income, uninsured, and underinsured people living with HIV (PLWH) in Pasadena, the San Gabriel Valley, and surrounding communities

## The Program Model



## Lessons Learned

Using non-traditional providers for PLWH can open up other opportunities, especially for housing. Taking the time to educate agencies that are not specialized in HIV and/or are not funded by Ryan White about the needs of PLWH has allowed for new partnerships to develop. We believe that this will eventually lead to an even bigger system of care for PLWH, with added resources that were not previously used or considered.

Peer support and education helps encourage clients to seek employment. Many long-term survivors of HIV and/or homelessness believe that they will lose their benefits or fear stigma in the workplace. Peers can serve as great examples of living and thriving with HIV, balancing careers and adhering to medical care.

Due to the broad geographic landscape of Los Angeles, as well as lack of access to efficient transportation, it is critical to meet clients where they are whenever possible. The Operation Link team often travels together to meet the clients at one time and accompany them to appointments to ensure adherence to treatment or care plans.

## Key Innovation

Peer Care Navigator to assist in navigating systems, as well as to provide advocacy and peer support

Use of non-traditional providers for helping PLWH (i.e. agencies not necessarily only for PLWH)

## Preliminary Outcomes

### Individual level

9 clients housed

9 clients employed

### System level

Creation of a client advisory board specifically around homelessness programs and issues

Homelessness being addressed in LA County's Universal Standards of Care

Working with local medical providers to reduce barriers to care (i.e. waiting for government-issued ID)

Gaining local media coverage and support around homelessness issues

## \* HRSA Acknowledgement

This project was supported by the Health Resources and Services Administration (HRSA) of the U.S. Department of Health and Human Services (HHS) under grant number H97HA31431 Special Projects of National Significance (SPNS) Initiative, Improving Health Outcomes Through the Coordination of Supportive Employment & Housing Services, in the amount of \$300,000 awarded to the City of Pasadena Public Health Department. No percentage of this project was financed with non-governmental sources. This information or content and conclusions are those of the authors and should not be construed as the official position or policy of, nor should any endorsements be inferred by HRSA, HHS or the U.S. Government.