



Conducting Community Needs Assessments to Inform Priority Setting and Resource Allocation for HIV Prevention and Service Delivery Efforts

Michelle Dawson - Precious Ilonah – Eddie Wiley



Disclaimer

ELEVATE is supported by the Health Resources and Services Administration (HRSA) of the U.S. Department of Health and Human Services (HHS) as part of a financial assistance award totaling \$796,749.00 with 100 percentage funded by HRSA/HHS. The contents are those of the author(s) and do not necessarily represent the official views of, nor are they endorsed by HRSA/HHS, or the U.S. Government. Images in photos contain models and may not be people with HIV.

Partners



Facilitators



Lauren Miller



Michelle Dawson



Precious Illonah



Eddie Wiley

Objectives

By the end of this webinar, you will be able to:

Define the steps included in a needs assessment

Understand the different types of data gathered and tools used when conducting a needs assessment

Describe the role of community members in need assessments

List considerations when analyzing and utilizing community needs assessment data to inform priority setting and resource allocation

Zoom Keeping



Recording will be available on targethiv.org/elevate

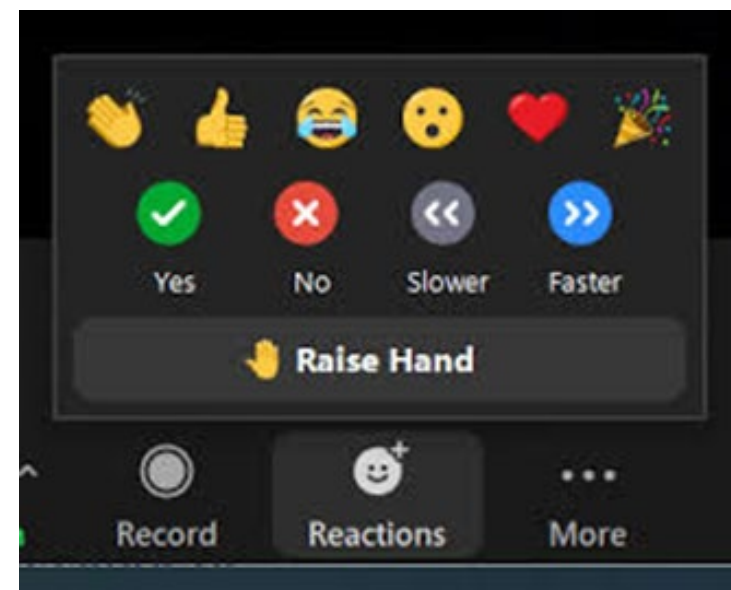


Participation: Please use Zoom Reaction features including:

- raise hand
- chat



Audio: Please mute when not speaking



Have You Ever...

- Wanted to receive a service that was not available?
- Wished services could be provided differently?
- Wished your community had better access to services?



RWHAP Part A Planning Councils/Planning Bodies (PC/PBs) are **Unique**

Priority Setting and Resource Allocation

- **Priority Setting:** PC/PB members decide which services are most important to people with HIV in the EMA or TGA
 - The planning council must prioritize only service categories that are included in the RWHAP legislation as core medical services or support services.
- **Resource Allocation:** PC/PB members agree on which service categories to fund and how much funding to provide

Core Medical and Support Services

Core medical-related services, including:

- AIDS Drug Assistance Program (ADAP) Treatments
- Local AIDS Pharmaceutical Assistance Program (LPAP)
- Early Intervention Services (EIS)
- Health Insurance Premium and Cost Sharing Assistance for Low-Income Individuals
- Home and Community-Based Health Services
- Home Health Care
- Hospice Services
- Medical Case Management, including Treatment Adherence Services
- Medical Nutrition Therapy
- Mental Health Services
- Oral Health Care
- Outpatient/Ambulatory Health Services
- Substance Abuse Outpatient Care

Support services, including

- Child Care Services
- Emergency Financial Assistance
- Food Bank/Home Delivered Meals
- Health Education/Risk Reduction
- Housing
- Linguistic Services
- Medical Transportation
- Non-Medical Case Management Services
- Other Professional Services [for example, Legal Services and Permanency Planning]
- Outreach Services
- Psychosocial Support Services
- Referral for Healthcare and Support Services
- Rehabilitation Services
- Respite Care
- Substance Abuse Services (residential)

Priority Setting and Resource Allocation

- **Priority Setting:** PC/PB members decide which services are most important to people with HIV in the EMA or TGA
 - The planning council must prioritize only service categories that are included in the RWHAP legislation as core medical services or support services.
- **Resource Allocation:** PC/PB members agree on which service categories to fund and how much funding to provide

Priority Setting and Resource Allocation are the **most important** responsibilities of the PC/PB.



Needs Assessments

Needs Assessments

Needs assessment: A systematic process of collecting and analyzing information in order to understand service needs or gaps between current and desired conditions

Ryan White HIV/AIDS Program (RWHAP)

Needs Assessments

- Process of collecting information about the needs of people with HIV in a RWHAP Part A jurisdiction, both those receiving care and those not in care
- A planning task usually led by the planning council/planning body (PC/PB)

“The planning council established or designated under paragraph (1) shall— (A) determine the size and demographics of the population of individuals with HIV/AIDS, as well as the size and demographics of the estimated population of individuals with HIV/AIDS who are unaware of their HIV status; (B) determine the needs of such population, with particular attention to (i) individuals with HIV/AIDS who know their HIV status and are not receiving HIV-related services; (ii) disparities in access and services among affected subpopulations and historically underserved communities; and (iii) individuals with HIV/AIDS who do not know their HIV status...”
– 2009 legislation, §2602(b)(4)(B)

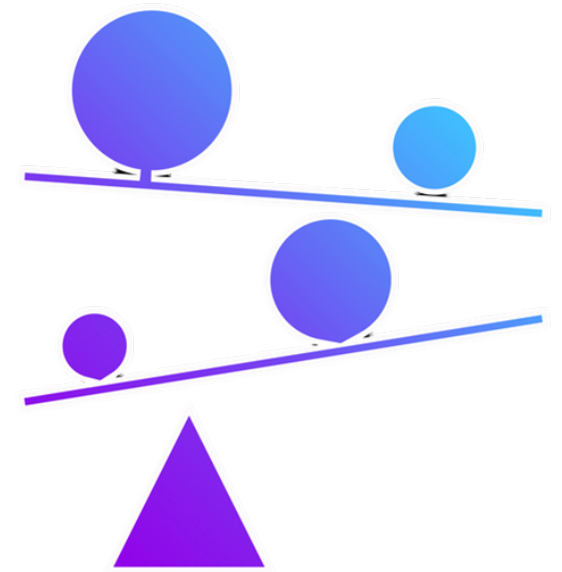
“...establish methods for obtaining input on community needs and priorities which may include public meetings (in accordance with paragraph (7)), conducting focus groups, and convening ad-hoc panels”
– 2009 Legislation, §2602(b)(4)(G)

In the chat, tell us...

In your own words, what is the purpose of needs assessments?

Think back to the definition to help you with your answer.

Purpose of Needs Assessment



The needs assessment must include **direct** input from people with HIV.

Why Be Involved with Needs Assessments

- Community perspective is essential!
- Provides justification for services
- Ensures that the services that are funded are:
 - The most needed by the community
 - Of good quality
 - Responsive to the changing needs of people with HIV

Needs Assessments Generate Data for Key Planning Tasks

- Public health seeks to be evidence and data-based, and we want the available services to reflect the data
- Generates data for key planning tasks:
 - Used for priority setting and resource allocation of RWHAP Part A funds, including developing directives
 - Developing or updating the HRSA/CDC Integrated Prevention and Care Plan
 - Improving services, with particular emphasis on reducing HIV-related health disparities

In the chat, tell us..

Needs assessments help to determine the service _____ in a population.

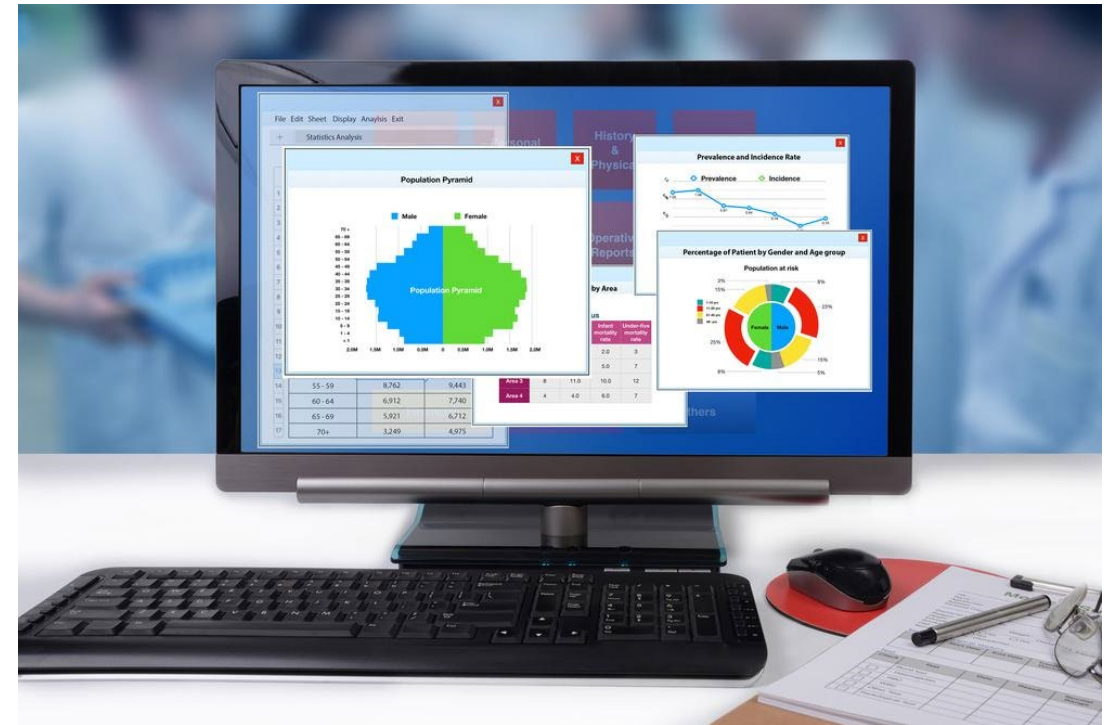
- a. initiatives
- b. gaps
- c. subjects
- d. resources



Steps and Components of Needs Assessment

Epidemiological Profile

- A description of the current status of the epidemic in the community
- Information on the number and characteristics of people in a specified geographic area who have been diagnosed with HIV.



Resource Inventory



- A listing and description of the providers of HIV-related services in a specified geographic area, what types of services they provide, where, and to whom.

Assessment of Service Needs and Gaps



- Information about the service needs of people with HIV and barriers to obtaining these services.

Profile of Provider Capacity and Capability

- Information on the capacity of service providers in a specified geographic area to meet the needs of people with HIV, including the extent to which services are:
 - Available
 - Accessible
 - Appropriate



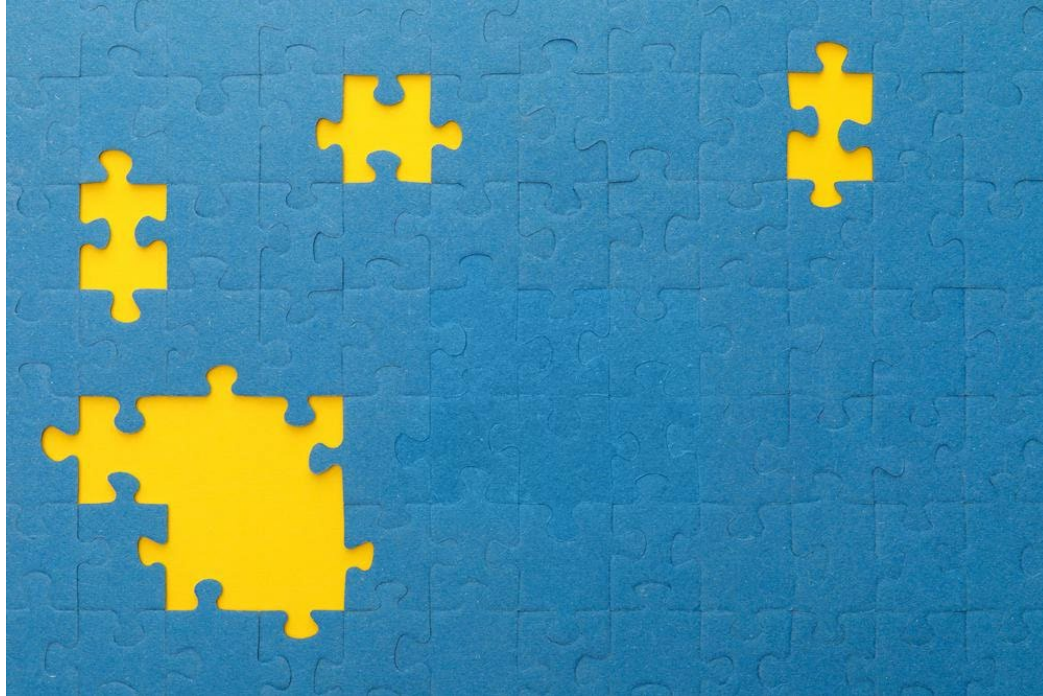
Estimate and Assessment of **Unmet Need**

- **Estimate of unmet need:** the estimated number of people in a specific geographic area who know they have HIV, but are not receiving regular HIV-related primary medical care
- **Assessment of unmet need:** information about people who know they are have HIV, but are not receiving regular HIV-related primary medical care

Estimate and Assessment of People with HIV Who Are Unaware of Their Status

- An estimate of the number of people in a place who have HIV but have not received a diagnosis
- Usually calculated using national estimates of HIV positive/unaware from CDC
- An assessment involves exploring what subpopulations are most likely to be unaware of their status

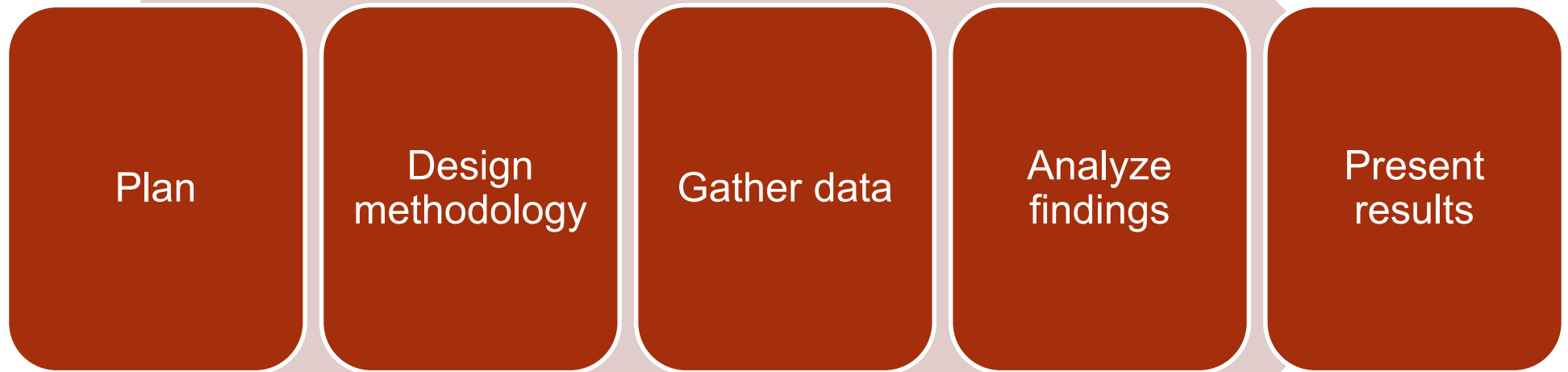
Assessment of Service Gaps



A review to determine gaps in care for for people with HIV, including:

- service needs and barriers
- provider capacity and capability
- other data to determine gaps in care

Steps in Needs Assessment



How Can **You** Participate in Your Community's Needs Assessment?

1. In the chat, tell us...

Have you been involved in needs assessments?

- a. Yes
- b. No

2. In the chat, tell us...

In what way have you been involved with needs assessments?

Consider whether you have...

- Sat on Needs Assessment Committee
- Participated in focus groups
- Took surveys
- Reviewed needs assessment data

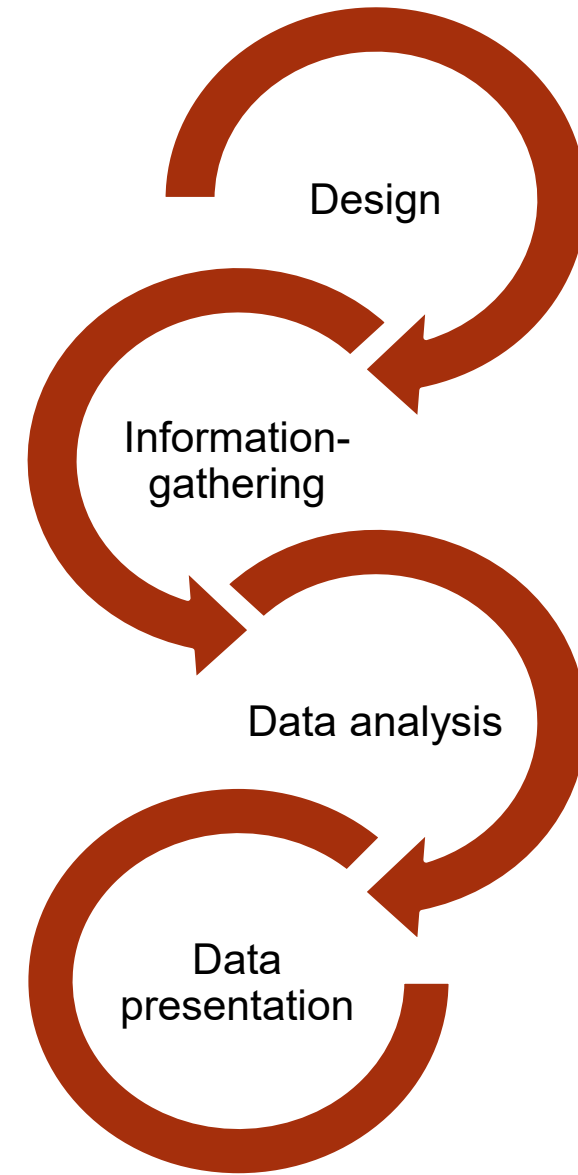
3. In the chat, tell us...

Do you think you need to be a member of your local RWHAP Part A Planning Council to be involved in the needs assessment process?

- a. Yes
- b. No

People with HIV do not need to be members of the PC/PB to contribute to Needs Assessment activities.

Community Input is Needed in Every Step of the Process



Design of Needs Assessment

- What will the needs assessment look like?
- How will data be collected?
- What question should be asked
- How to ask the questions in a culturally appropriate way?

Provide Data

- Respond to surveys
- Participate in focus groups
- Participate in key informant sessions or interviews
- Participate in town halls
- Participate in Community forums

Support Data Collection



- Facilitate focus groups or key informant sessions
- Chair or facilitate town halls or consumer forums
- Administer online or paper surveys
- Identify and recruit consumers from priority populations to complete a survey or attend a town hall

Support Interpretation of Findings

- What do the data mean?
- Provide context for the needs assessment findings

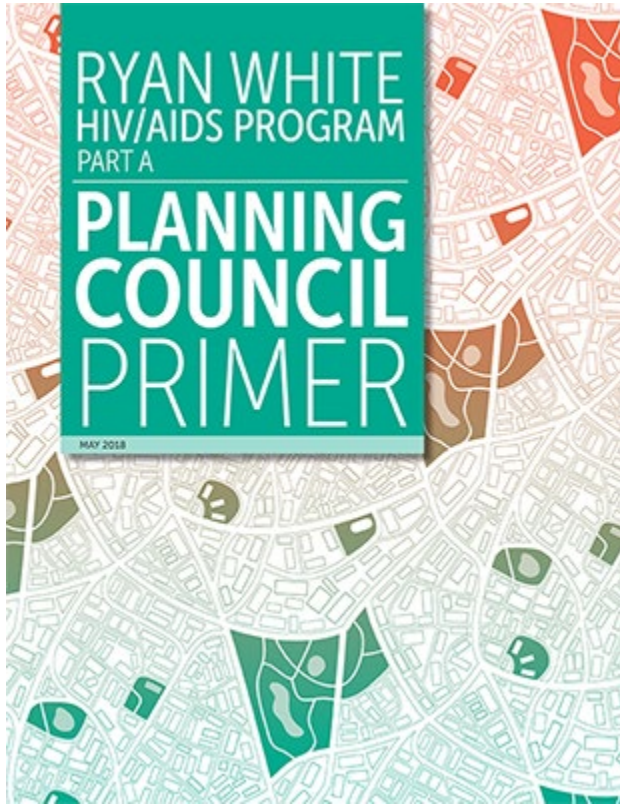
4. In the chat, tell us...

In what ways would you like to be involved in needs assessments in the future?

Would you like to...

- Sit on Needs Assessment Committee
- Participate in focus groups
- Complete surveys
- Review needs assessment data
- Something else?

Resources



[RWHAP Part A Planning Council Primer](#)

- [Planning CAHTT Training Guide - Module 4: Needs Assessment](#)
- [Ryan White HIV/AIDS Program Planning Council and Planning Body Requirements and Expectations Letter](#)
- [HHS HRSA 2013 RWHAP Part A Manual](#)
- [Conducting RWHAP Part A Needs Assessments Webinar \(2018\)](#)

5. In the chat, tell us...

How will you get involved in your jurisdiction's next needs assessment?

Your voice is important!



Thank You!

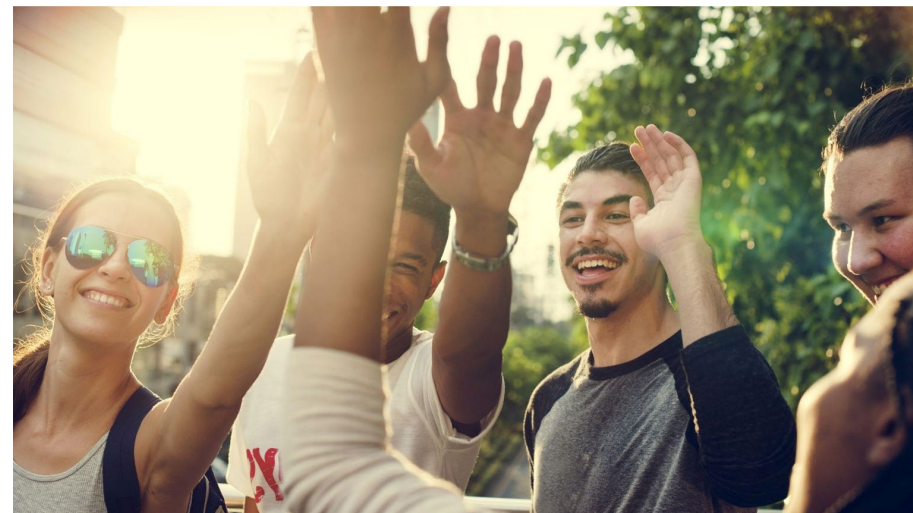
Upcoming **Webinars**

Preparing Your Organization to Meaningfully Employ People with HIV

May 31, 2022

*Visit <https://targethiv.org/elevate> in the
coming days to register!*

See you there!



Get in Touch



Charles Shazor, Jr.
(Pronouns: he, him, his)
Director, The Center to End the
Epidemics
cshazor@nmac.org

Lauren Miller
(Pronouns: she, her, hers)
Health Equity Program Coordinator
The Center to End the Epidemics
lmiller@nmac.org



Q&A