

# Housing First as a Key Strategy to End the HIV Epidemic

September 19, 2023

12:00 PM – 1:30 PM EST

11:00 AM – 12:30 PM CST

10:00 AM – 11:30 AM MST

9:00 AM – 10:30 AM PST

Ending  
The  
HIV  
Epidemic



Technical Assistance Provider  
innovation network

A Project of  CAI

# Cooperative Agreement Award # U69HA33964

This project is supported by the Health Resources and Services Administration (HRSA) of the U.S. Department of Health and Human Services (HHS) as part of the Year 4 award with 0% financed with non-governmental sources. The contents are those of the authors and do not necessarily represent the official views of, nor an endorsement by, HRSA, HHS or the U.S. Government.

| Ending  
| The  
| HIV  
| Epidemic



Technical Assistance Provider  
innovation network

A Project of  CAI

Strengthen & support implementation of jurisdiction Ending the HIV Epidemic (EHE) Plans to contribute to achievement of reduction in new reported HIV cases by 90% by 2030

| Ending  
| The  
| HIV  
| Epidemic



Technical Assistance Provider  
innovation network

A Project of  CAI

Tip: Get TAP-in TA and Training by Contacting [TAP-in@caiglobal.org](mailto:TAP-in@caiglobal.org)

| Ending  
| The  
| HIV  
| Epidemic

 Technical Assistance Provider  
innovation network

A Project of  CAI

# Moderators & Presenters

## **Alice Douglas**

Director of Learning Collaboratives, CAI

## **Margaret Haffey**

Manager, Learning Collaboratives, CAI

## **Ginny Shubert**

Co-Founder and Senior Advisor, Policy and Research, Housing Works

## **Ken Robinson**

Consultant; former VP of Housing, Housing Works

## **Aleezah McKenna**

Director of Quality Initiatives for Housing, Housing Works



# Agenda

---

1. The Importance of Housing for People with HIV
2. An Introduction to Housing First
3. Making a Housing First Approach Actionable
4. Panel Discussion
5. Opportunity to Join the Housing as Healthcare Learning Community
6. Evaluation & Closing

# Learning Objectives

---

1. Describe a Housing First approach
2. Articulate the evidence base for Housing First as a best practice
3. List three ways a Housing First approach could be promoted by an EHE jurisdiction

# The Importance of Housing for People with HIV



# Housing Status Predicts HIV Health

Homelessness or housing instability among People with HIV (PWH) independently predicts<sup>1</sup>:

- Delayed entry into care & and discontinuous care
- Not being on ARVs & lower rates of adherence
- Detectable viral load
- Higher rates of avoidable emergency & inpatient health care
- Premature mortality





# Housing Status Predicts HIV Health

Receipt of housing assistance linked to<sup>1</sup>:

- Retention in care that meets clinical standards
- Effective ART (viral load suppression)
- Reduction in avoidable health care costs
- Steep reductions in mortality



# One in Five PWH is Housing Insecure

---

- Over 1 in 5 (21%) of all PWH surveyed nationally reported at least one experience of homelessness or housing instability in the past 12 months, of whom 31% had at least one experience of literal homelessness<sup>2</sup>
- PWH experiencing housing instability experienced the same disparities in HIV health care and outcomes as those experiencing literal homelessness<sup>2</sup>

# An Introduction to Housing First



# Word Cloud

---

When you think about the Housing First model, what word(s) come to mind?



# When you think about the Housing First model, what word(s) come to mind?



Word Cloud Generated by PollEv.com

# Housing First: An Evidence-Based Approach to Ending Homelessness

---

- Housing First is a person-centered approach that prioritizes providing placement in stable housing as an essential foundation for pursuing other health and social goals.
- Recognized as a best practice by HRSA and HUD and required by HUD for Continuum of Care funded programs, and by many state and local HIV housing funders.
- Key to meeting the needs of priority populations often excluded from conditioned housing.

# Growing Evidence Base for Housing First

Compared to residents of programs employing a “treatment first” approach, program residents with HIV in Housing First programs<sup>3</sup>:



▲ 22% greater rate of viral load suppression

▼ 37% lower mortality rate

▼ 13% lower rate of depression



▼ 41% less use of emergency departments

▼ 36% less inpatient hospitalizations



▼ 37% less homelessness

# Levels of Housing First

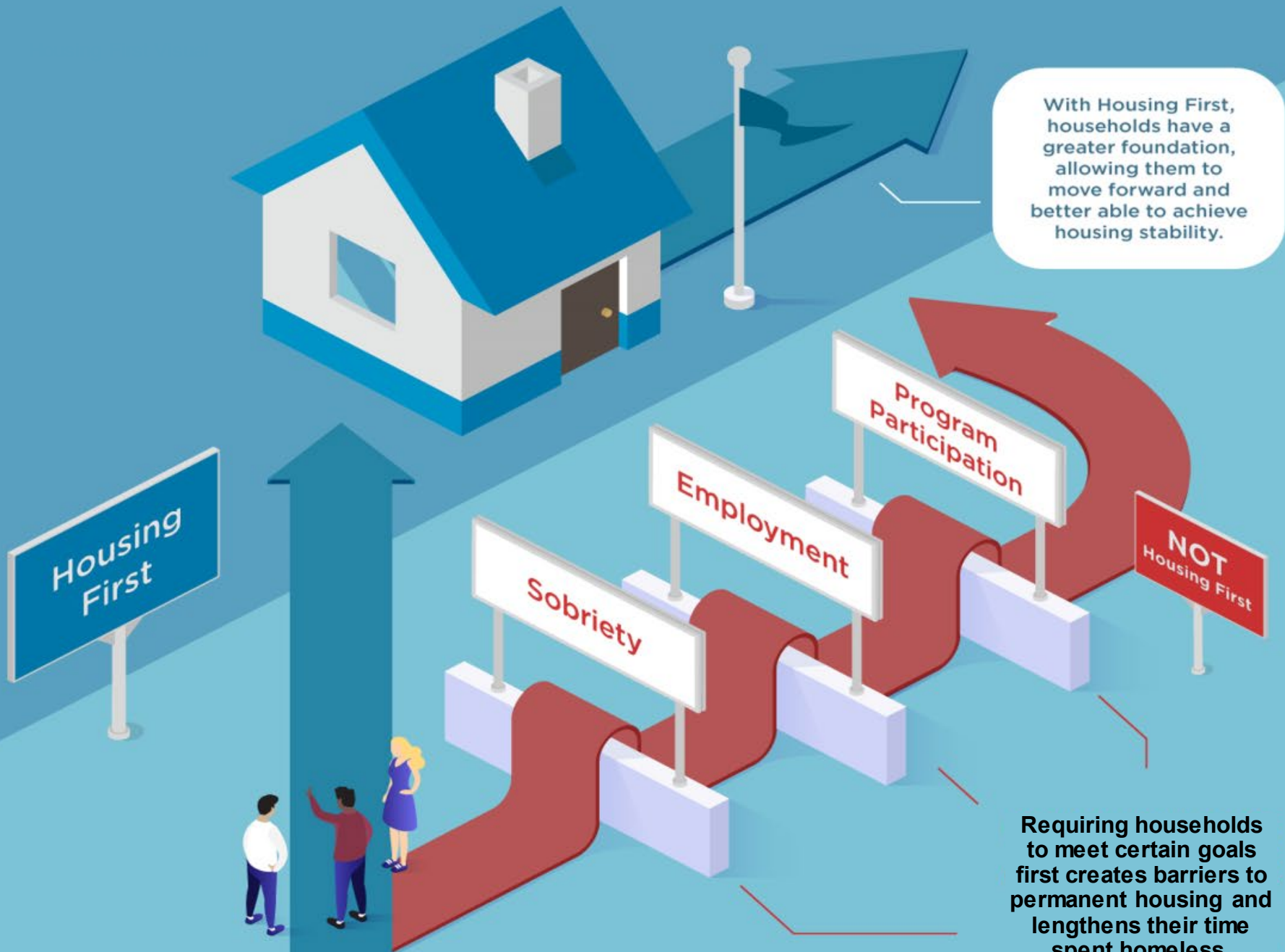
## Program Level

- Acceptance without preconditions/barriers to entry
- No condition of sobriety or participation in treatment services

## Community Level

- Safe
- Low-threshold
- Emergency & transitional options





With Housing First, households have a greater foundation, allowing them to move forward and better able to achieve housing stability.

Requiring households to meet certain goals first creates barriers to permanent housing and lengthens their time spent homeless.

(National Alliance to End Homelessness, 2022)

# First Core Principle of Housing First

---

Everyone is "housing ready" and housing programs should be "consumer ready"





## Second Core Principle of Housing First

Admission policies should promote rapid and streamlined entry with minimal barriers

# Third Core Principle of Housing First

Services are primarily focused on reducing harms to sustain housing and prevent return to homelessness





# Fourth Core Principle of Housing First

Support services should  
emphasize engagement and  
always be voluntary

# Fifth Core Principle of Housing First

---

Housing practices and policies are designed to prevent lease violations and evictions



# Housing First Approach: A Core EHE Component

---

- Support engagement and retention in care
- Stop HIV-related mortality
- Reduce the risk of ongoing HIV transmission
- Provide the stability necessary to empower residents
- Lower costs by averting new infections and reducing avoidable healthcare utilization

# Housing First Scenarios





# Quimby Street Apartments

---

This low-income housing program requires demonstrated abstinence for 90 days or enrollment in substance use treatment prior to signing a lease.

**This is NOT a Housing First model.**



# Phoenix Place

---

This housing unit requires residents to maintain a minimum of 25 hours of employment weekly.

This is NOT a Housing First model.



# Piper Pointe Apartments

---

This low-income housing program provides case management and offers residents the opportunity to participate in training in financial management and life skills, as well as referrals to behavioral health care, including a syringe services program.

This IS a Housing First model.



# Making a Housing First Approach Actionable



# Housing First in Tarrant County, Texas

---

Updating future contract language to include policies on implementing a Housing First approach for sub-recipients



# Housing First in Broward County, Florida

---

Prioritized funding for CBOs who implement a Housing First approach in an RFP they released to their community



# Housing First in Wayne County, Michigan

---

Updating their data collection systems to collect more nuanced data and assess if housing services are provided in a Housing First approach



# Making a Housing First Approach Actionable

---

- Direct funding to sub-recipient programs with minimal barriers to housing access and retention, coupled with active offer of voluntary support services
- Advocate for public policies that require a Housing First approach for funded programs
- Provide education & training to stakeholders and partners on Housing First principles and implementation
- Update sub-recipient data collection forms to be able to track level of implementation of Housing First



# Panel Discussion



# Meet the Panelists



**Michele Rector**

*(she/her)*

*Transitional Housing Coordinator  
Philadelphia Department of Public  
Health, Division of HIV Health*



**Anna Thomas-Ferraioli**

*(she/her)*

*Ending the HIV Epidemic Advisor  
Philadelphia Department of Public  
Health, Division of HIV Health*



**Phoebe Trepp**

*(she/her)*

*Executive Director  
Clare Housing  
Minneapolis, MN*

# Opportunity to Join the Housing as Healthcare Learning Community



# Cohort 1 Participants of the Housing as Healthcare Learning Community



# Learning Community Implementation Process

## Recruitment & Participants

- Selection process
- Orientation webinar
- Implementation teams formed

## Implementation

- Virtual Learning Sessions
- In-person Learning Sessions
- Action Period Webinars
- Summative Congress
- Development of EHE housing strategic plans

## Close Out & Continued Support

- As-needed technical assistance calls
- Participation in dissemination opportunities
- Ongoing community and networks of passionate colleagues

On-demand access to Subject Matter Expert's monthly technical assistance coaching calls



# Join Cohort 2 of the Housing as Healthcare Learning Community!

Ending  
The  
HIV  
Epidemic

 Technical Assistance Provider  
innovation network

A Project of  CAI

# Goal of the Housing as Healthcare Learning Community

---

To reduce new HIV infections by 90% by 2030 by increasing housing opportunities for people with HIV by strategically building and maintaining partnerships through Ending the HIV Epidemic (EHE) and Ryan White HIV/AIDS Program funds, HOPWA, and Continuum of Care, and other federal, state, and local supportive and/or low-income housing assistance programs.



# Apply for Cohort 2!

Applications are due  
September 30, 2023.

For more information, visit:  
<http://www.caiglobal.org/tapinhousingcommunity>

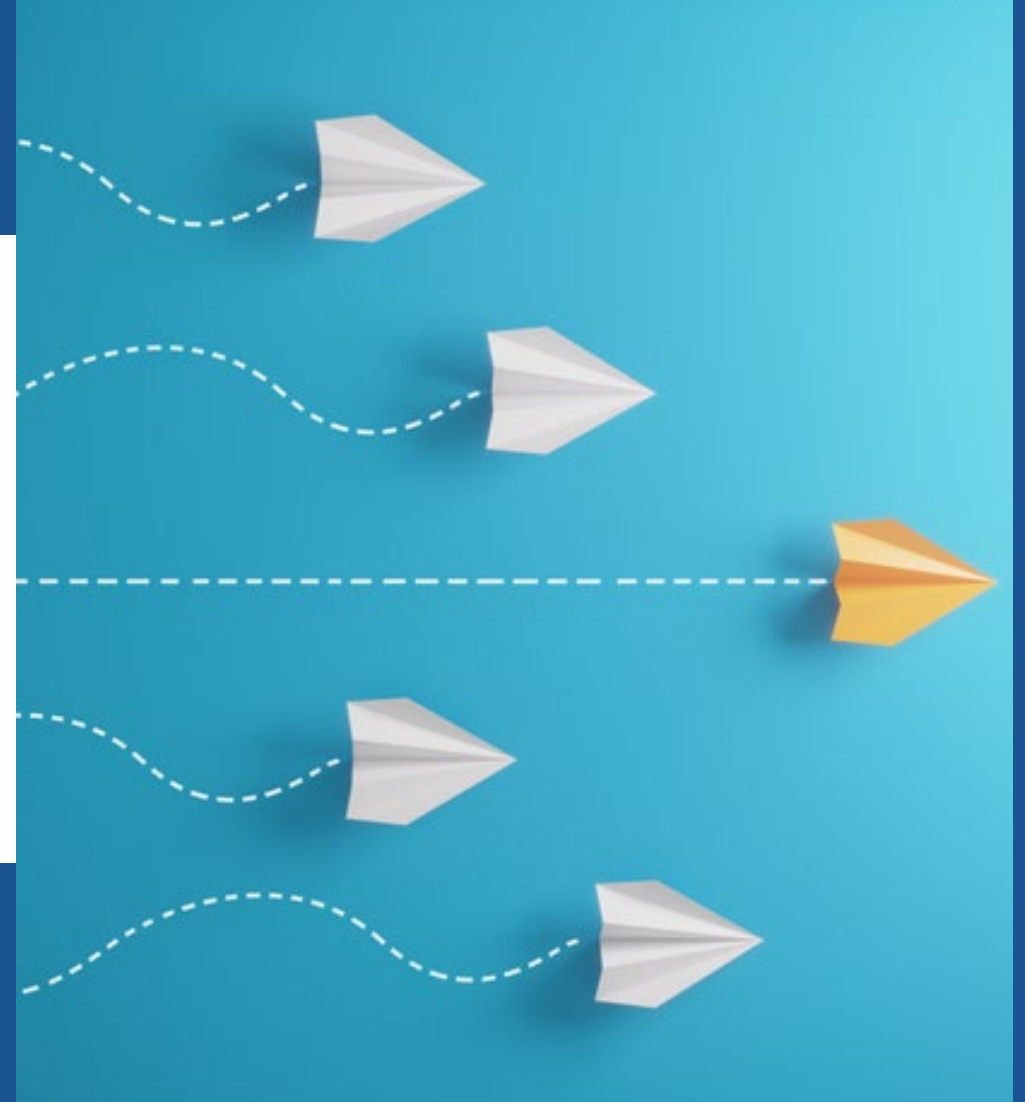






# Questions?

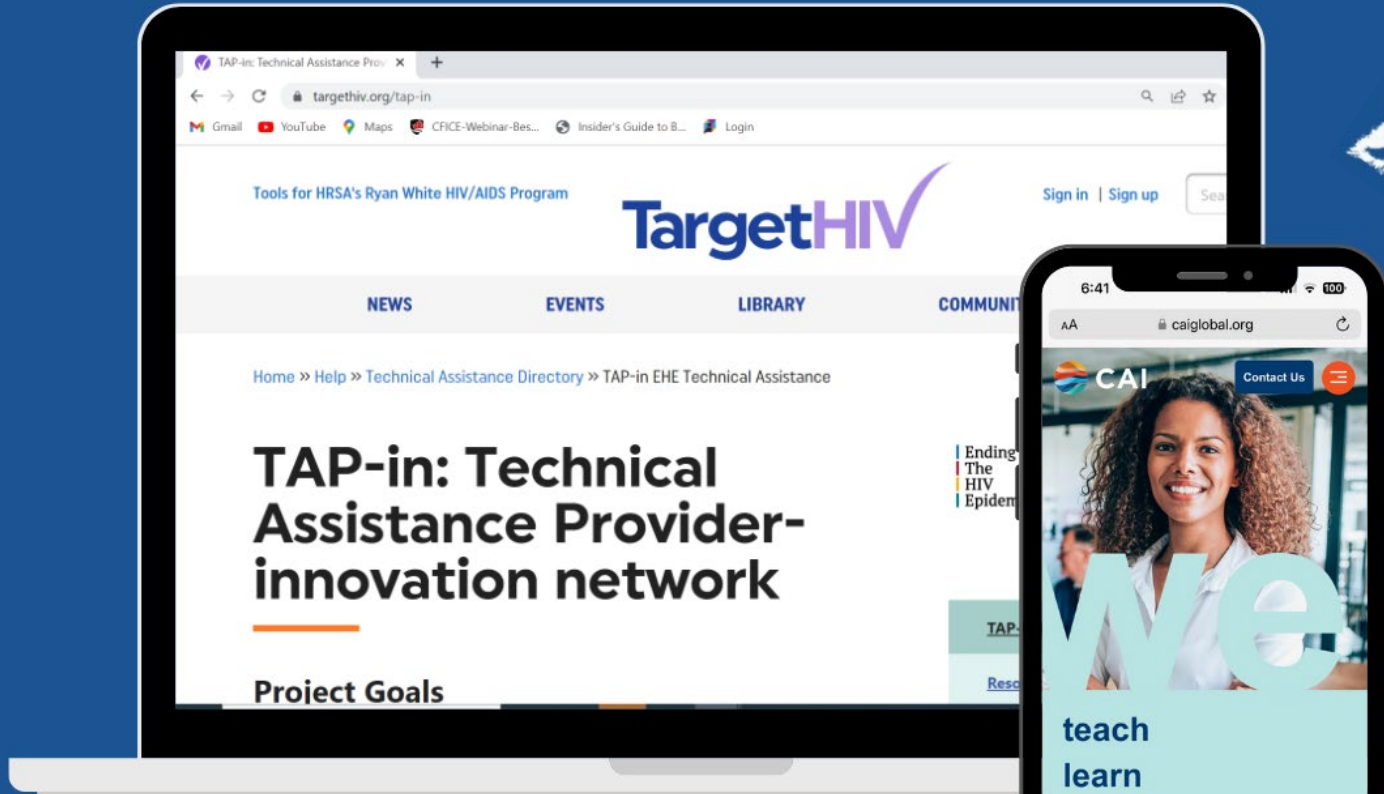
# Closing and Evaluation





## What We Can Do For You TA for Rapid Start

- Review and offer ways to strengthen your Rapid Start Plan
- Facilitate understanding of staff roles
- Provide tools
  - *Rapid ART: An Essential Strategy for EHE* available on <https://targethiv.org/tap-in>
- Support Learning Collaboratives



Check us out!

# How to Request TA

Email: [TAP-in@caiglobal.org](mailto:TAP-in@caiglobal.org)

# Thank You

**Your feedback is important to us!**

To complete our evaluation, you must be registered for this webinar.

If you have not registered, please register using the link in the chat.

# Citations

---

- 1) Aidala et al. Housing status, medical care, and health outcomes among people living with HIV/AIDS: A systematic review. *American Journal of Public Health* 2016; 106(1): e1–e23.
- 2) Marcus et al. Characteristics of Adults With Diagnosed HIV Who Experienced Housing Instability: Findings From the Centers for Disease Control and Prevention Medical Monitoring Project, United States, 2018. *J Assoc Nurses AIDS Care*. 2022 May-Jun 01;33(3):283-294.
- 3) Peng et al. Permanent Supportive Housing With Housing First to Reduce Homelessness and Promote Health Among Homeless Populations With Disability: A Community Guide Systematic Review. *J Public Health Manag Pract*. 2020 Sep/Oct;26(5):404-411.

# Contact Information

---

**Sharon Novey** | [SNovey@caiglobal.org](mailto:SNovey@caiglobal.org)

TAP-in Project Director, CAI

**Alice Douglas** | [ADouglas@caiglobal.org](mailto:ADouglas@caiglobal.org)

Director of Learning Collaboratives, CAI

**Ginny Shubert** | [G.Shubert@housingworks.org](mailto:G.Shubert@housingworks.org)

Co-Founder and Senior Advisor, Policy and Research, Housing Works

**Ken Robinson** | [K.Robinson@housingworks.org](mailto:K.Robinson@housingworks.org)

Consultant; former VP of Housing, Housing Works