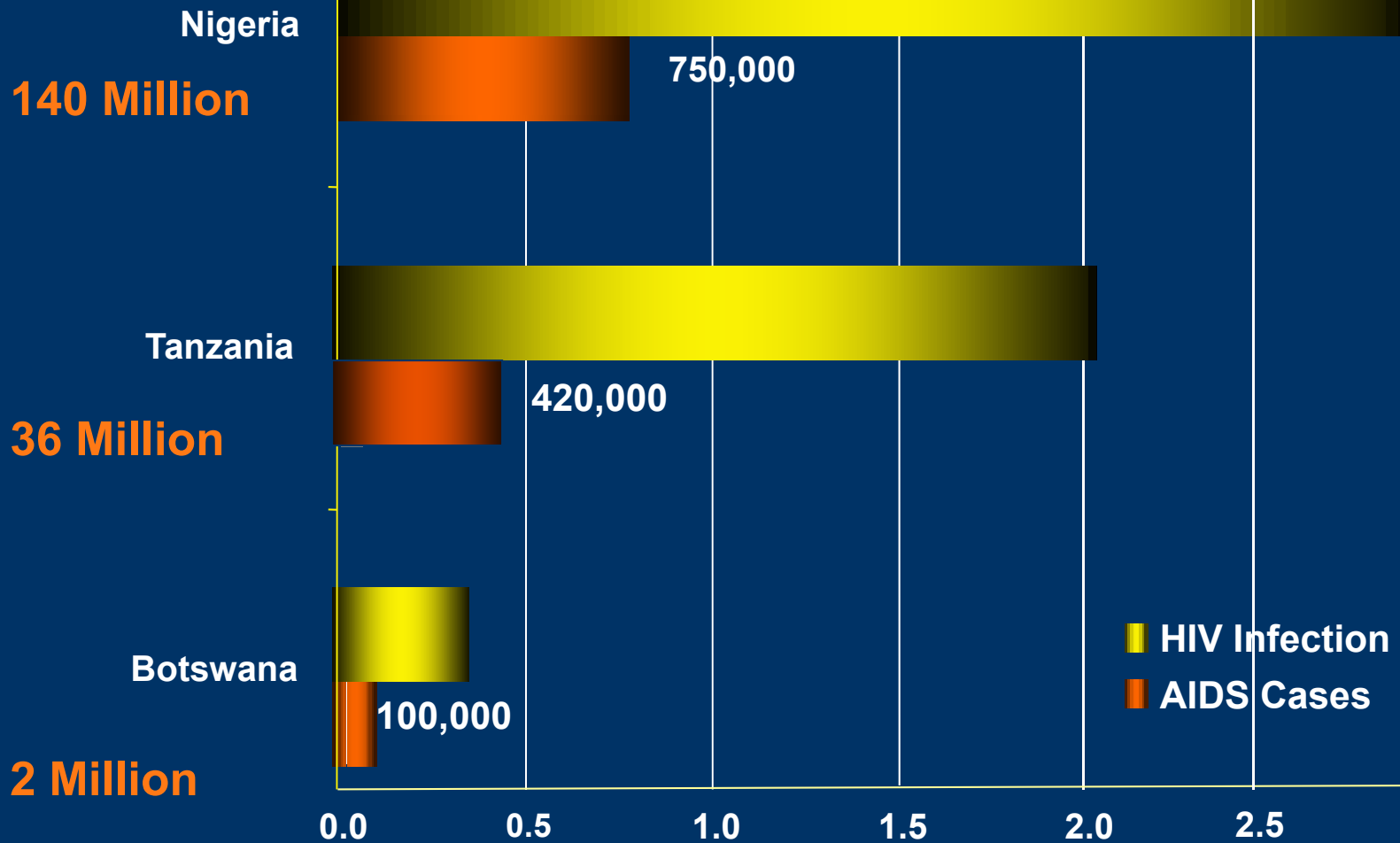


Successful Retention Interventions in International Settings



Phyllis Kanki
Harvard School of Public Health

Harvard PEPFAR program



Million



HIV Care and Treatment

	Botswana	Nigeria	Tanzania	Total
Persons ever enrolled in HIV Care	18,975*	118,688	89,612	227,275
Persons ever initiated on ART	13,654*	76,166	57,274	147,094
Number of ART Facilities	102	26	41	169
Number of PMTCT Facilities	---	61	83	144

* CMT sites and adults only; Botswana National ART program “Masa” - calculated

Prevention

Blood Safety

Injection Safety

350,000

Counseling & Testing

Lab Infrastructure

Monitoring & Evaluation

PMTCT

Care

HIV Adults Care

Pediatric Care
Orphans

85,000

HIV/TB

Treatment

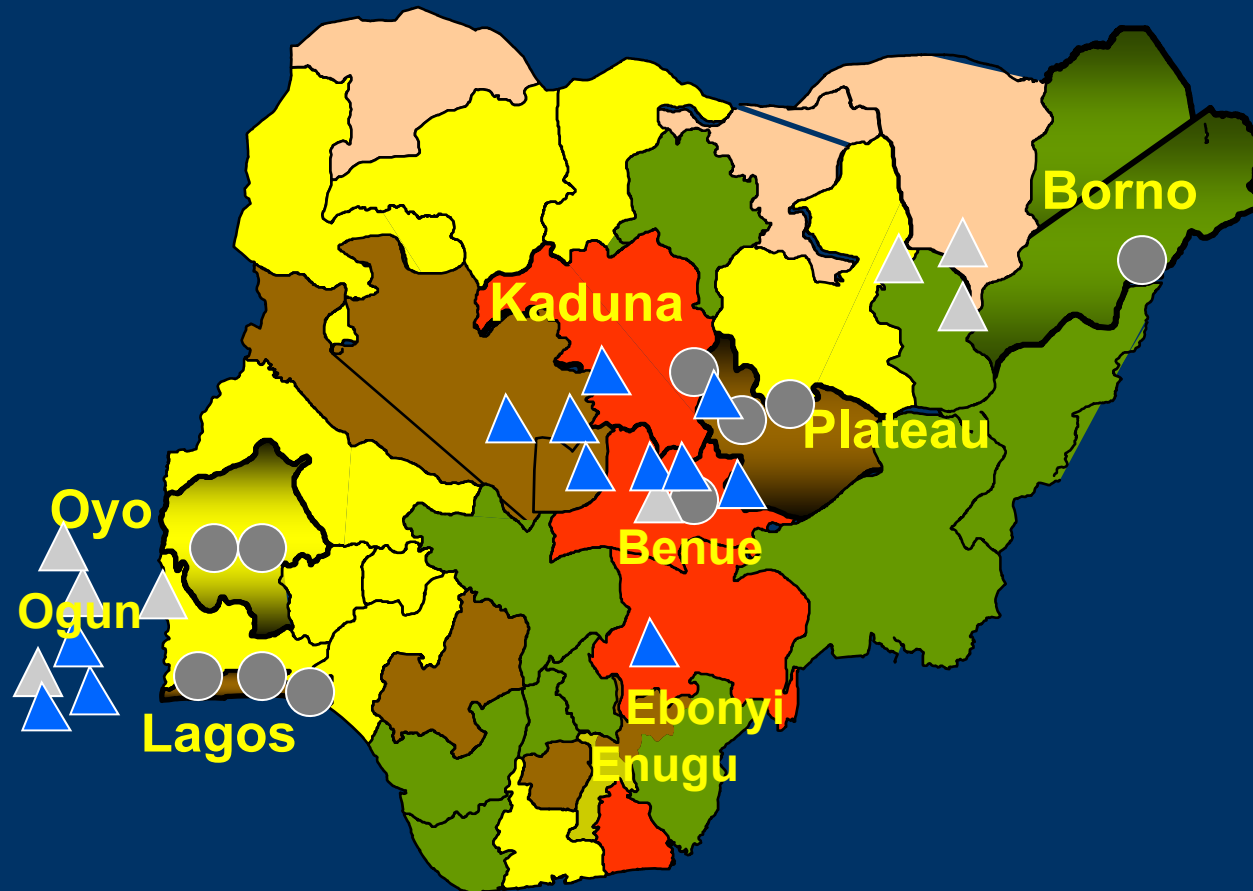
54,000

ART Services
Adults & Pediatric





APIN Plus- Harvard PEPFAR



- Tertiary teaching hospital or research institute (n=11)
- ▲ Secondary hospital or primary health facility (n=21)



President's Emergency Plan for AIDS Relief
PEPFAR
Harvard School of Public Health, Boston, MA

Adult Antiretroviral Treatment Protocol

Version 2.0 Protocol 01.04.09



PEPFAR
Boston, MA

Pediatric guidelines

Version 2.0 Protocol 01.01.08



FEDERAL MINISTRY OF HEALTH

NATIONAL GUIDELINES
on

PREVENTION OF MOTHER- TO CHILD
TRANSMISSION OF HIV (PMTCT)

JULY 2007



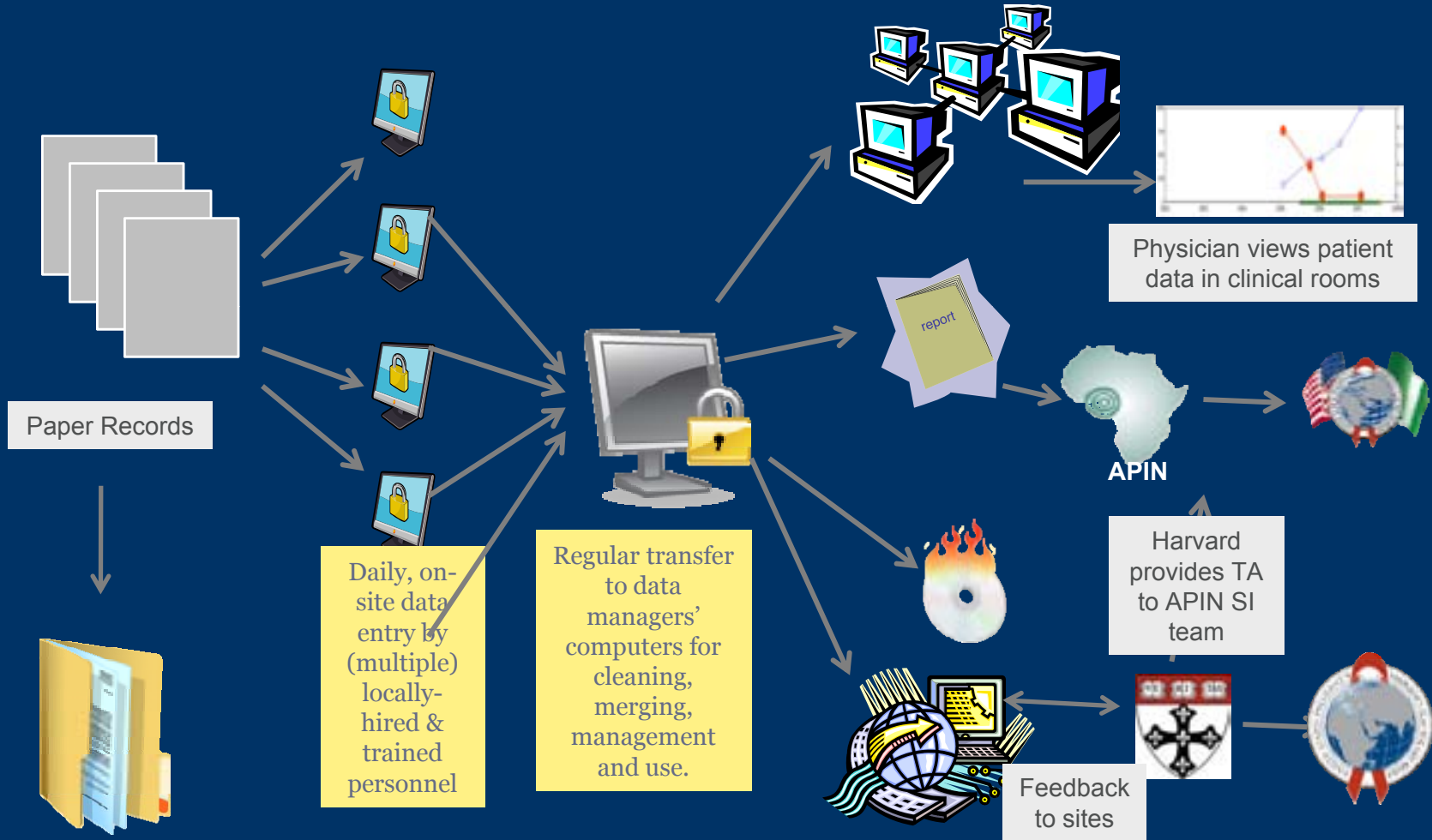
20 Years of Leadership
A LEGACY OF CARE



20th RYAN WHITE ALL GRANTEE MEETING AND 10TH ANNUAL CLINICAL CONFERENCE



Organization of Electronic Data System



PCPFAR ID
BO-04-0043

LAB. as of 07/08/2008

PHARMACY. as of 07/08/2008

ENTRY: as of 07/08/2008

Patient info

Visit date	RNA Viral Load	CD4 count	Hemo- globin	Creat- inine	ALT	Hep B SA
13 Jun 04	200	867		108	17	NEG
28 Nov 04	200	827				
12 Jun 06	200	877	44	76	10	
18 Jan 06	4,224	488	14	130	33	
07 Aug 06	200	880	13	81	34	
23 Jan 07	200	806	12	118	28	
16 Jun 07	200	781	12	94		
01 Dec 07	200	1,106	11	74	16	
17 May 08		1,026	10	66	10	

Dispense date	Drug 1	Drug 2	Drug 3	Drug 4	Supply (Months)	Days Late	% Adh
13 Jun 04	d4T	3TC	NVP				
11 Jul 04	d4T	3TC	NVP				
07 Aug 04	d4T	3TC	NVP				
06 Sep 04	d4T	3TC	NVP				
03 Oct 04	d4T	3TC	NVP				
31 Oct 04	d4T	3TC	NVP				
28 Nov 04	d4T	3TC	NVP				
26 Dec 04	d4T	3TC	NVP				
23 Jan 05	d4T	3TC	NVP				
20 Feb 05	d4T	3TC	NVP				
20 Mar 05	d4T	3TC	NVP				
17 Apr 05	d4T	3TC	NVP				
15 May 05	d4T	3TC	NVP		1		
12 Jun 05	d4T	3TC	NVP		1	-19	273
10 Jul 05	d4T	3TC	NVP		1	-19	273
07 Aug 05	d4T	3TC	NVP		1	-19	273
04 Sep 05	d4T	3TC	NVP		1	-19	273
30 Oct 05	d4T	3TC	EFV	EFV	1	0	77
27 Nov 05	3TC	d4T	EFV	EFV	1	-19	273
19 Dec 05	3TC	d4T	EFV	EFV	1	-25	600
16 Jan 06	3TC	d4T	EFV	EFV	1	-19	273
13 Feb 06	d4T	3TC	EFV	EFV	1	-19	273

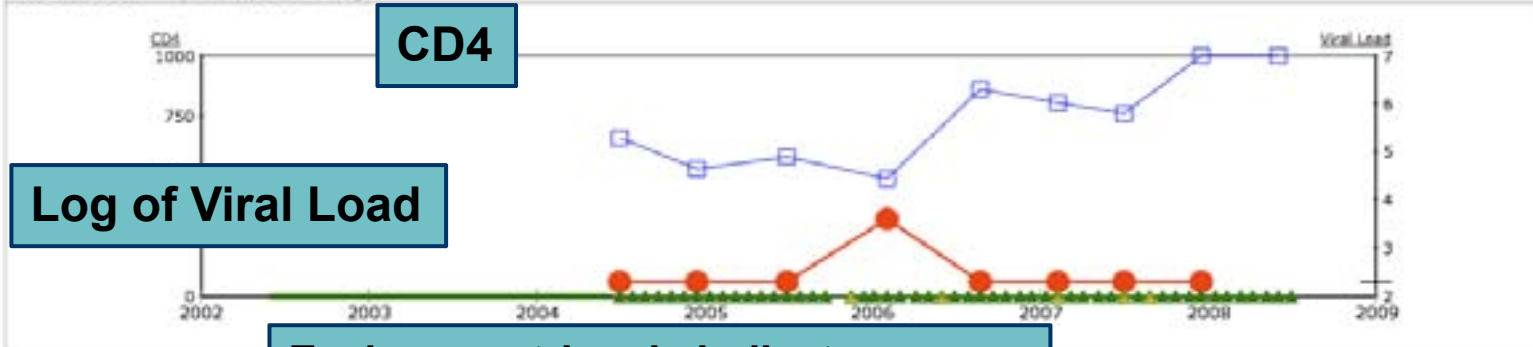
Laboratory Values

Pharmacy Pickups

TYPE OF GRAPH: TxResponse Weight

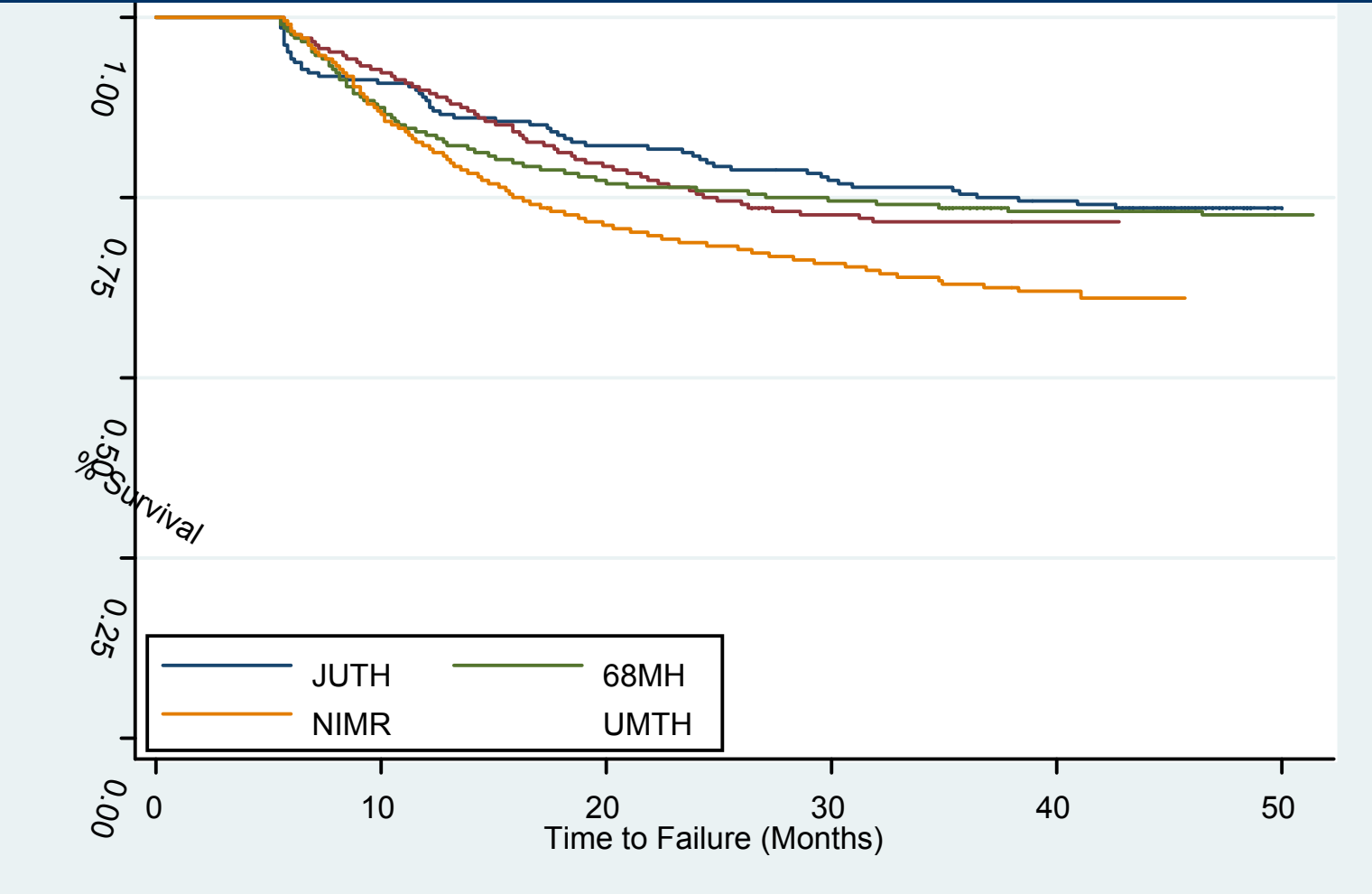
CD4

Log of Viral Load



Each green triangle indicates one pickup of antiretroviral medications. Orange triangles indicate a change in regimen.

Time to Virologic Failure by Site





Revised Nigerian PMTCT Guidelines

Mom

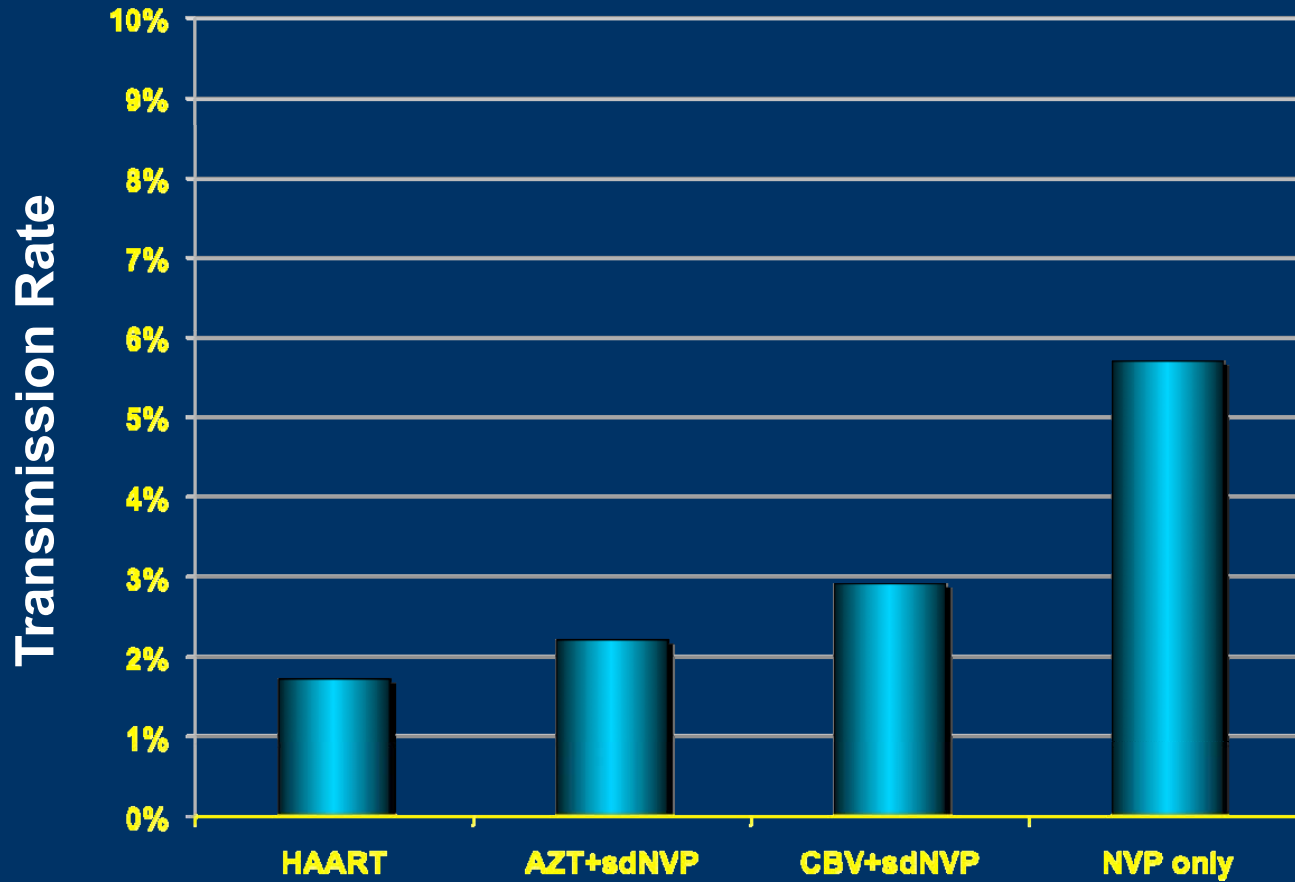
Delivery

Entry 28-33 weeks	ZDV	NVP	1 wk ZDV or CBV
Entry >34 weeks	ZDV+3TC	NVP	1 wk ZDV or CBV
Entry at Labor		NVP	1 wk ZDV or CBV
		NVP after delivery 6 weeks ZDV syrup	PCR

Assess for ART eligibility

Baby

PMTCT - Maternal prophylaxis



Meloni et al, 2009

Retention Strategies

- Integration of prevention, care and treatment services
- Electronic records – allows patients to see their treatment response
- High quality treatment and care programs including drugs, clinical services and laboratory testing– free of charge

Acknowledgements



P. Kanki (PI)
S. Meloni
E. Ekong
B. Chaplin
H. Rawizza
T. Rao
J-L. Sankalé
A. Dieng-Sarr
G. Eisen
D. Hamel
N. Nulenga
L. Dinic
J. Hosseini

P. Okonkwo
T. Jolayemi
B. Aluko
S. Ochigbo
R. Olaitan
J. Samuels
P. Akande
T. Oyebode
B. Akinyemi
O. Eberendu
C. O'Martins

J. Idoko
I. Adewole
O. Agbaji
O. Idigbe
D. Onwujekwe
C. Okany
R. Nkado
W. Gashau
H. Muktar
J. Abah
C. Chukwuka
D. Olaleye
S. Akanmu
F. Ogunsola



R. Murphy
K. Scarsi
K. Hurt
B. Taiwo
C. Achenbach



**All our colleagues at the APIN PEPFAR sites in Nigeria
Most of all, our patients**

This work was funded, in part, by the U.S. Department of Health and Human Services, Health Resources and Services Administration.