

Developing a Successful Network for Endodontic Services

Yaara Berdan, DDS
Clinical Assistant Professor
University of Southern California
Herman Ostrow School of Dentistry
berdan@usc.edu

Mary Orticke, RN, MPH
Chief, Quality Management Division
Los Angeles County Department of Public Health
Office of AIDS Programs & Policy
morticke@ph.lacounty.gov

Objectives

By the end of the session, participants will be able to:

- Describe the impact of oral health manifestations in HIV+ patients and needs for expanding oral health services.
- Learn key steps necessary in creating a successful network for endodontic services within an EMA or among Ryan White funded dental clinics.
- Use as reference, tools and strategies learned to implement a referral network for endodontic services.

Disclosures

Yaara Berdan, DDS

- Has no financial interest or relationship to disclose

Mary Orticke, RN, MPH

- Has no financial interest or relationship to disclose

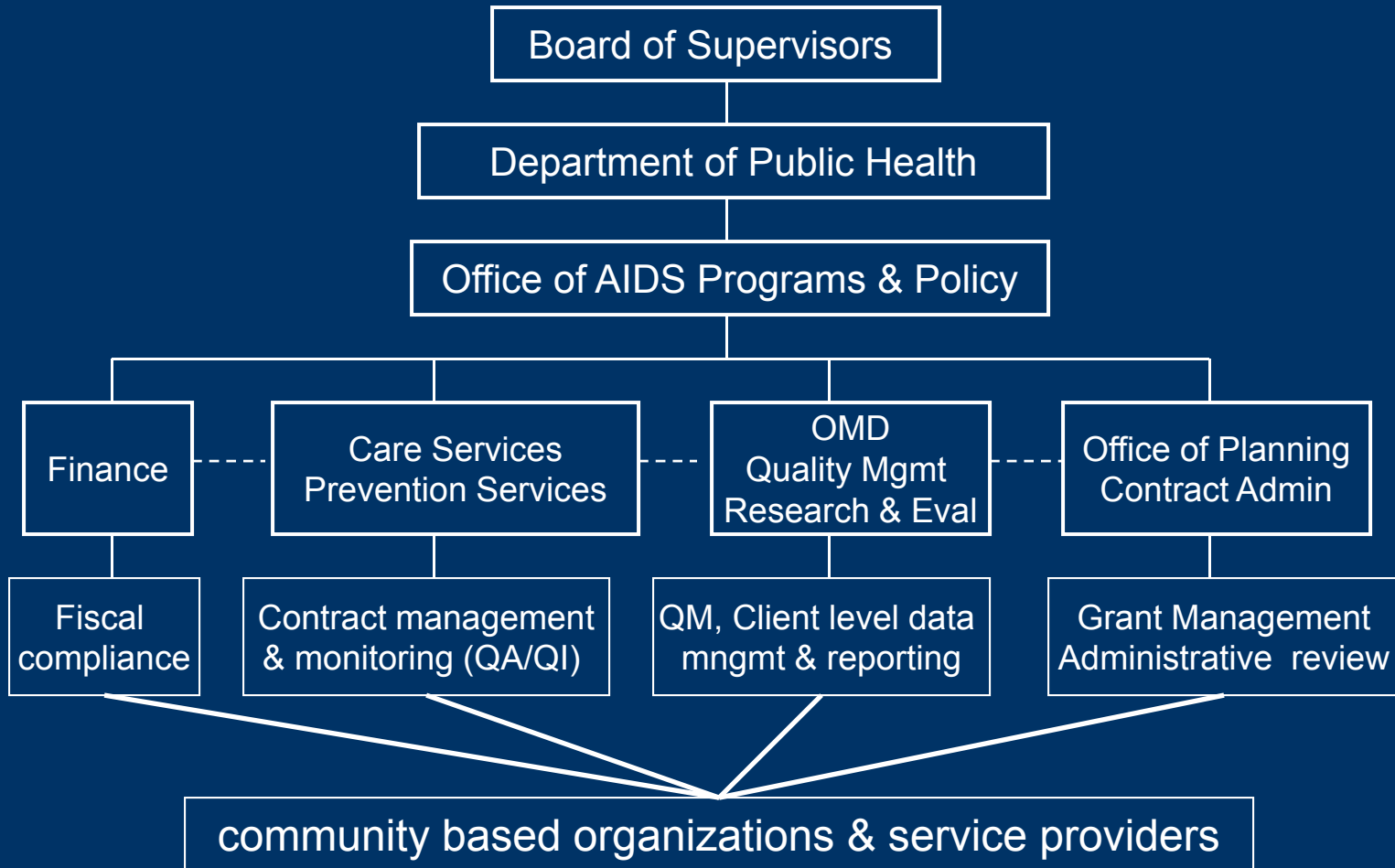
HRSA Education Committee

- HRSA Education Committee staff have no financial interest or relationships to disclose

CME Staff

- Professional Education Services Group staff have no financial interest or relationships to disclose

Office of AIDS Programs & Policy



Los Angeles County

Square Miles: 4,061

Population: 9.8 Million

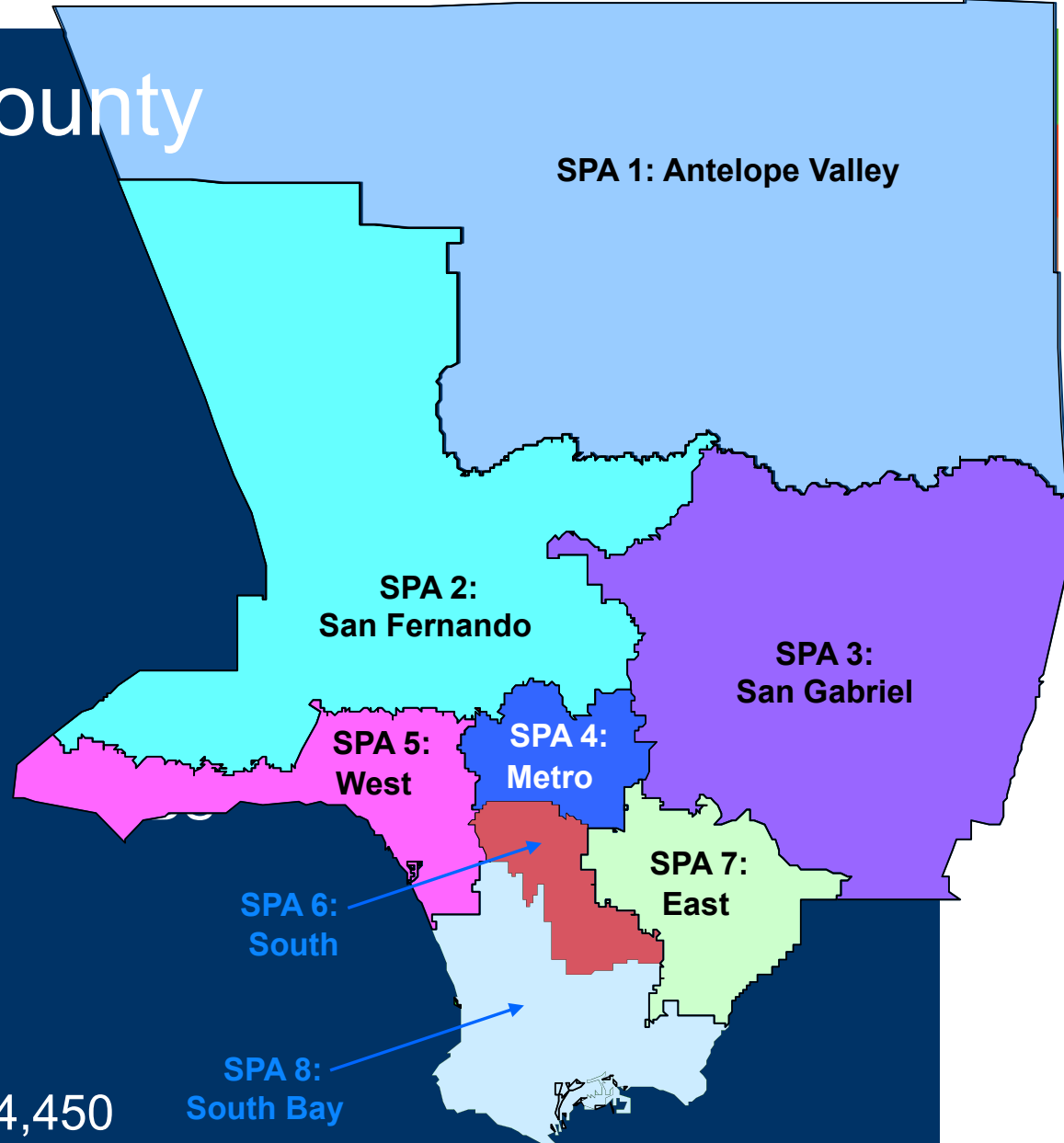
Latino/a	48%
White	28%
Asian/PI	14%
African-American	9%
Native American	1%

Proportion of California
Population: 28%

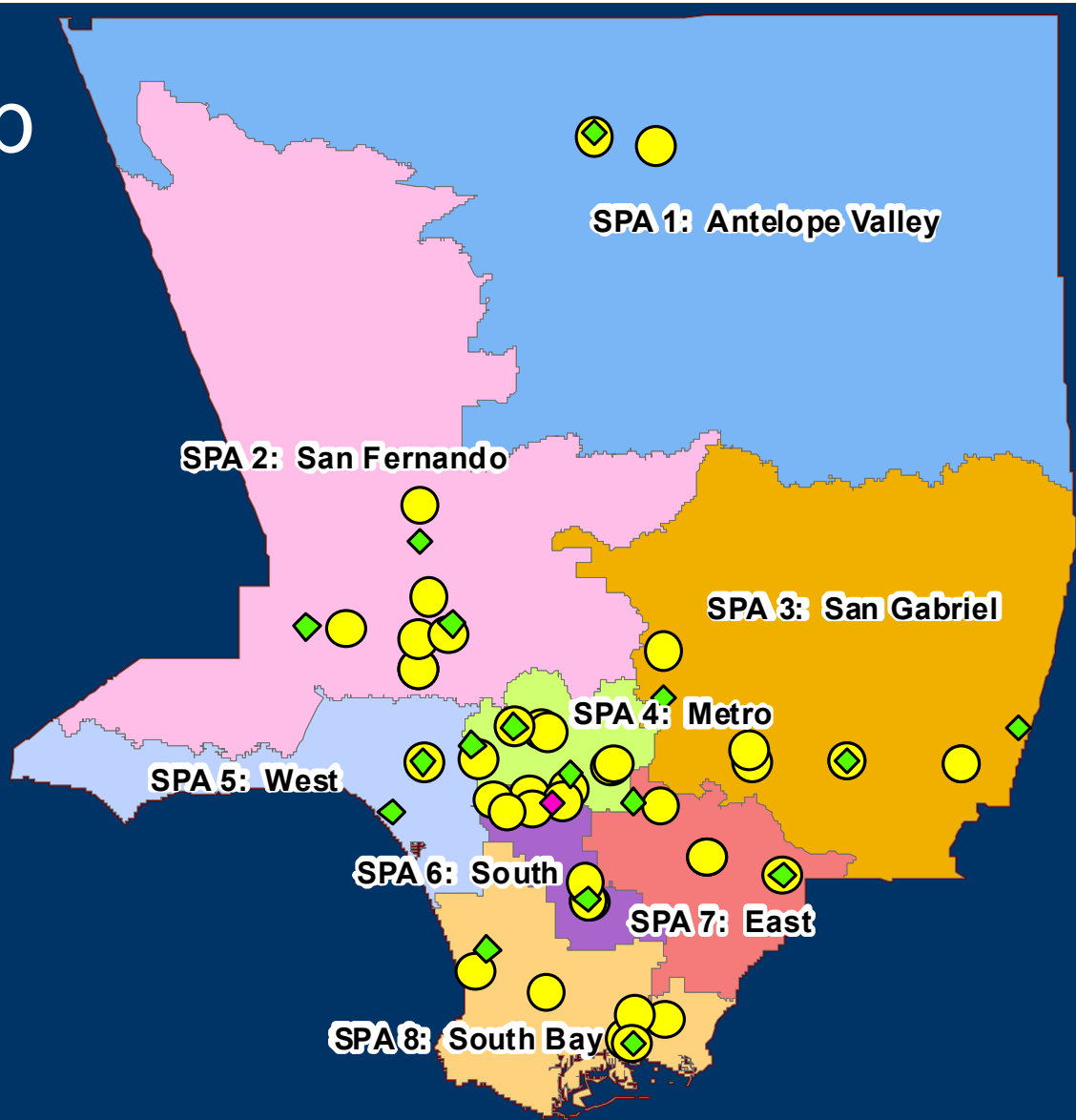
Proportion of California
Cases: 36%

Proportion of U.S. AIDS
Cases: 5.3%

Est. Living with HIV/AIDS: 44,450






Service Map




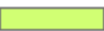

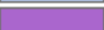




Legend

Dental Sites 2010

-  Dental Sites
-  Endodontic and Dental Site
-  Ryan White Medical Outpatient sites

SPA

-  1
-  2
-  3
-  4
-  5
-  6
-  7
-  8



Limited Access to Oral Health Services

- LACHNA, 2007 & 2008
 - >64% needed oral health care
 - 42% did not get needed services in the past year
- Meet the Grantee Meetings, 2007-2008
- Reports by oral health providers
- Denti-Cal elimination for adults, 7/2009

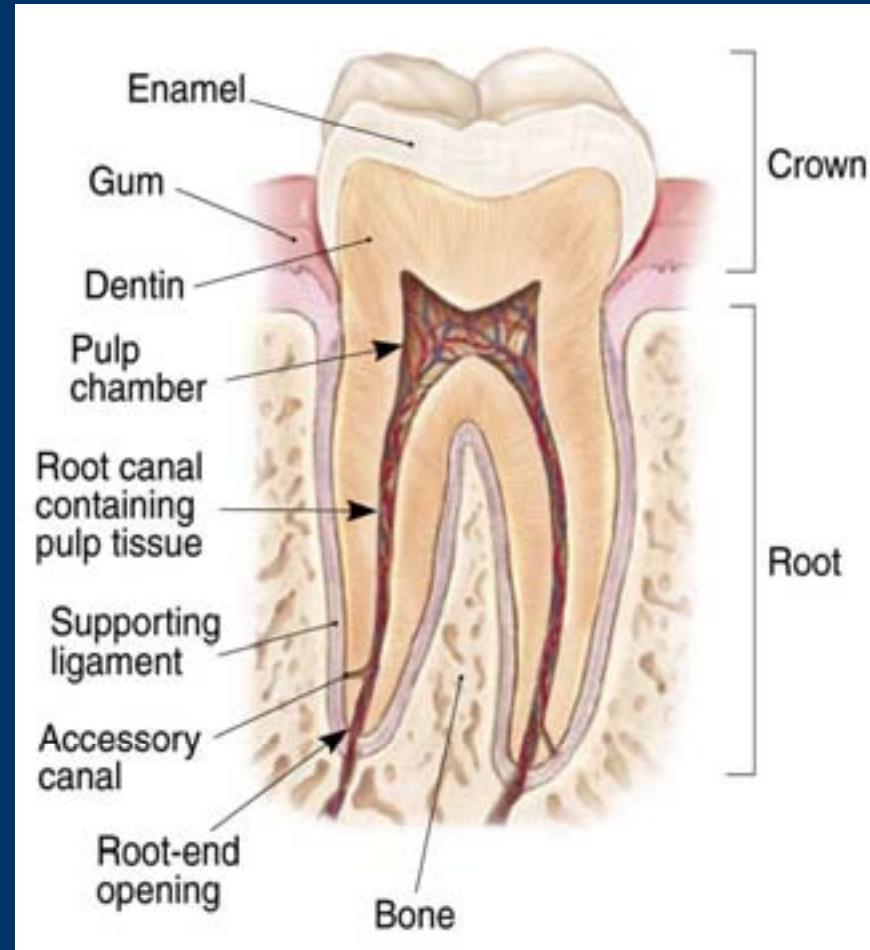
Rationale for Endodontic Treatment



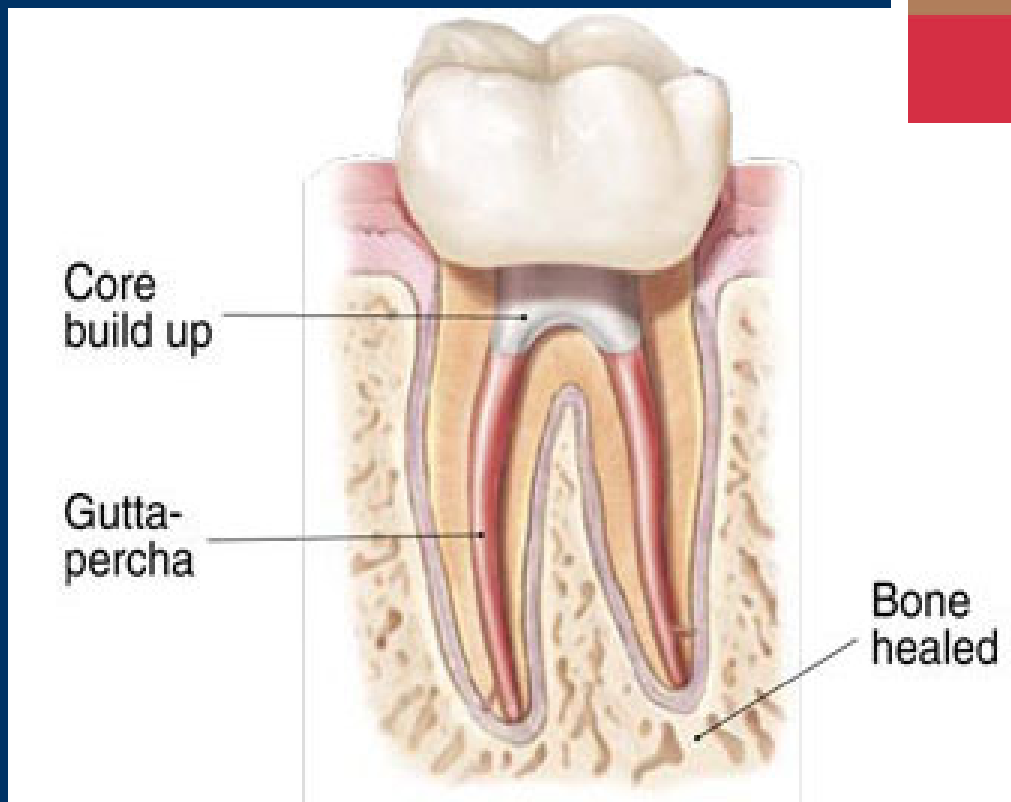
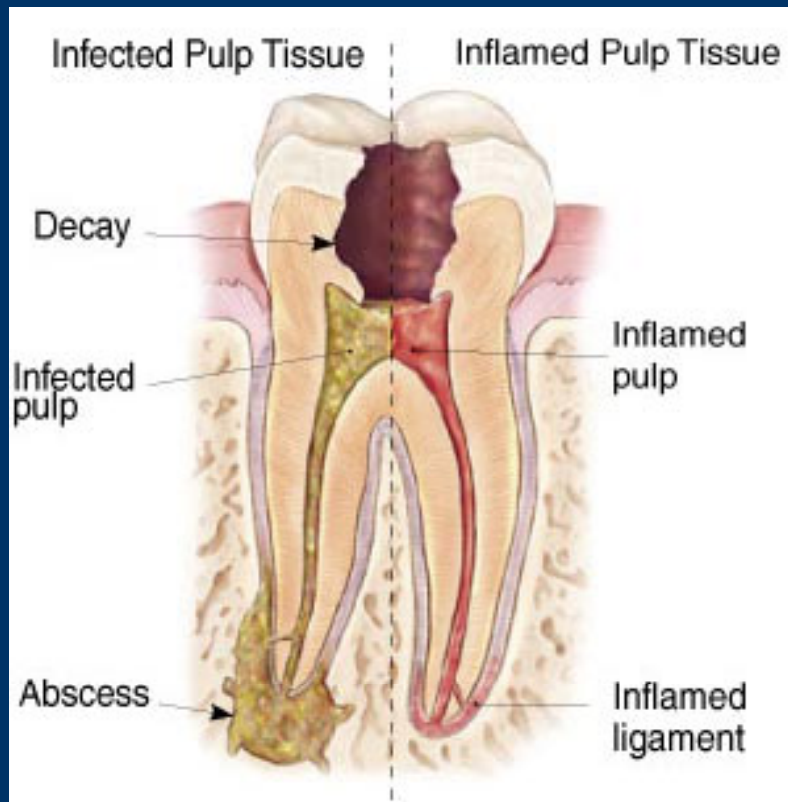
What Is Root Canal Treatment?

Root canal treatment is needed when the pulp becomes inflamed or infected as a result of:

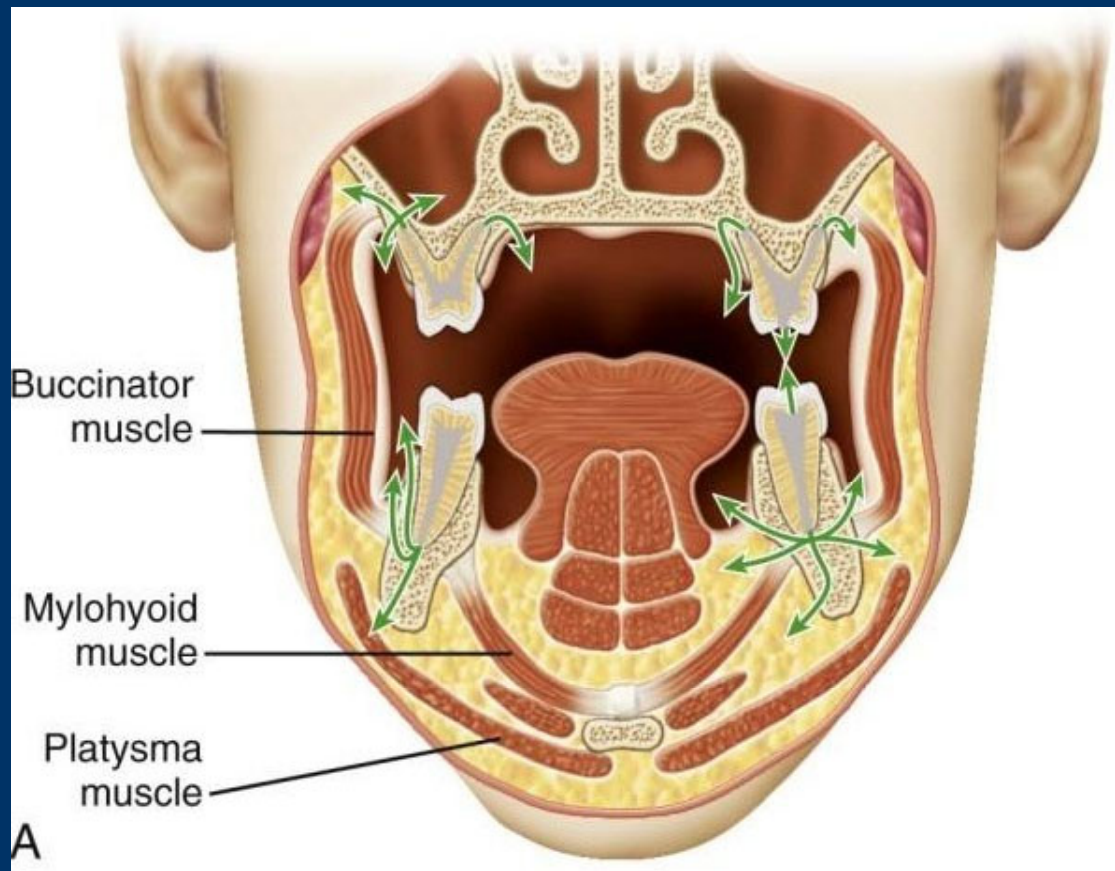
- injury
- deep decay
- repeated dental procedures
- a cracked or chipped tooth



What Is Root Canal Treatment?



Potential Spread of Odontogenic Infection



Basic Principles of Management

A review of the literature shows no difference in success rates and post operative complications with respect to root canal therapy in HIV + patients and healthy individuals

- The effect of human immunodeficiency virus on endodontic treatment outcome Journal of Endodontics September 2005
- Comparison of the success of root canal therapy in HIV/AIDS patients and non-infected controls General Dentistry March 2008

Endodontic Considerations

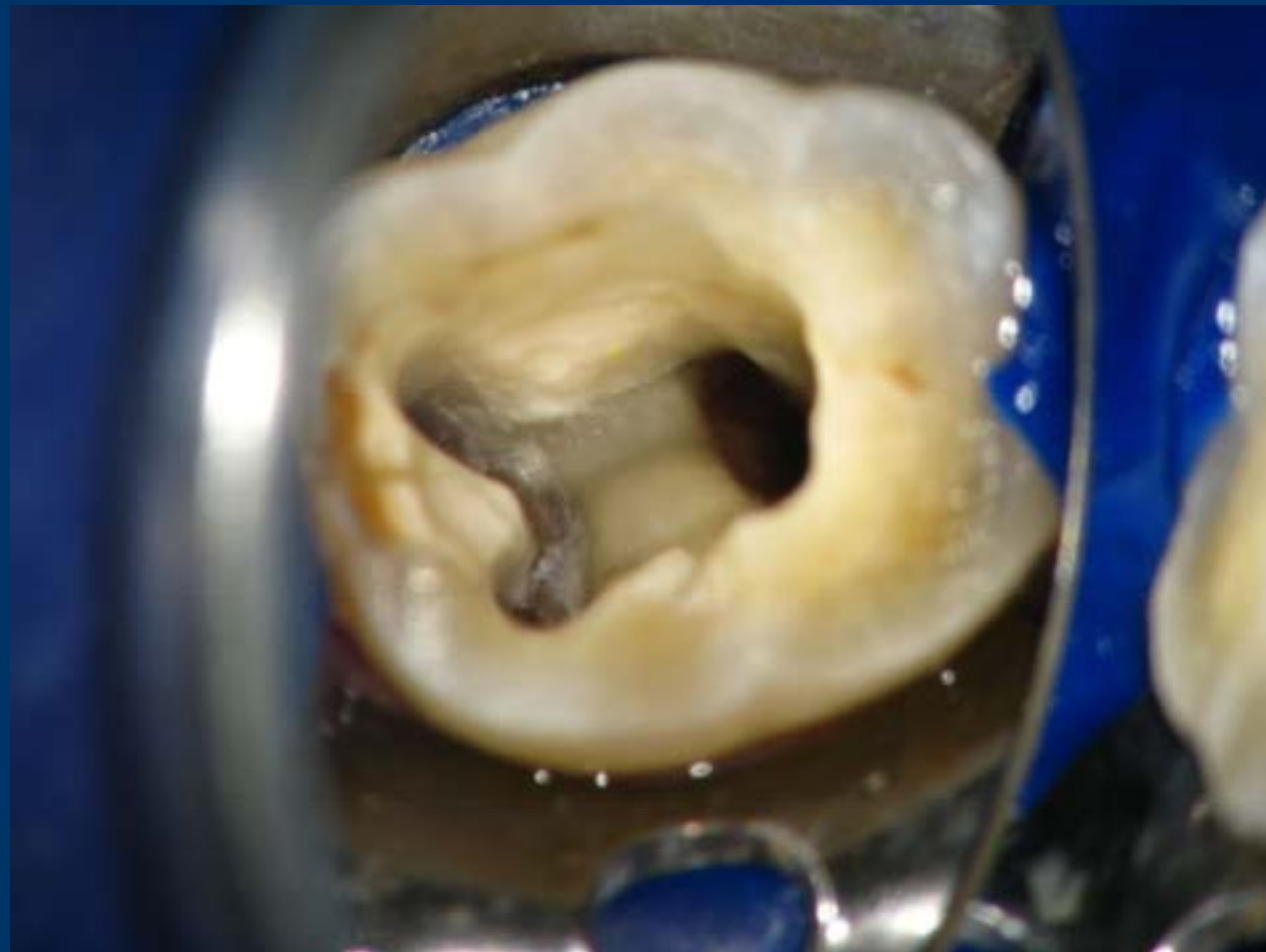
Endodontic treatment appears to offer many benefits and few drawbacks for HIV patients

- Reduced infection risk
- Reduced need for extraction
- Improved ability to chew
- Improved self-esteem

June 2000



WASTE



University of Southern California Herman Ostrow School of Dentistry



Burden of Oral Health Problems

- Negatively impacts quality of life
- Creates nutritional and psychological problems
- Complicates the management of other medical conditions
- Negatively impacts medication adherence

Limitations of System of Care

- Inability to perform more extensive dental care
- Tooth extraction is the only option for most patients
- Unique service delivery challenges

Collaboration & Partnerships in Addressing Gaps in System of Care

- Planning Body (Commission on HIV) and Grantee (OAPP) response
- Multiple collaborative meetings with dental providers
- Developing a plan of action and consensus

Steps to Establish Network of Care

- Establish a working group of stakeholders
- Review eligibility requirements
- Referral system process
 - Patient flow, referral form
- Training – data entry, billing & invoicing
- Reporting procedures
- Work on contracts and funding agreements

Benefits of Expanded Network

- Increased access to oral health services
 - increased clients served (>226 served since Mar-May 2010); >450 endo procedures performed
- Optimized oral health outcomes
 - client pain and discomfort treated; improved nutrition, self esteem and medication adherence
- Increased capacity for dental endodontic residents to care and treat a special population
- New service implemented and optimal grant funding utilization

Challenges

■ Referral process

- form development
- missing/unknown lab values (CD4, VL, neutrophil ct) and follow-up with primary dental or medical provider
- broken endo appointments
- training primary dental providers when “not” to refer their patients for endo tx

Lessons Learned



Communication

Communication

Communication is key!

Acknowledgements

Herman Ostrow School of Dentistry, USC

Roseann Mulligan, DDS, MS

Yaara Berdan, DDS

Melissa Nuestro

Piedad Suarez, DDS

Thomas Levy, DDS

Office of AIDS Programs and Policy

Carlos Vega-Matos, MPA

Marcy Fenton, RD, MS

Jose Gomez

David Pieribone

Jennifer Sayles, MD, MPH

Automated Case Management Services, Inc.

Andy Corrigan

John Parlow

Contact Information

Care Services Division Office of AIDS Programs and Policy

David Pieribone
Medical Services Section Manager
(213) 351-8122
dpieribone@ph.lacounty.gov

Carlos Vega-Matos, MPA
Chief, Care Services Division
(213) 351-8082
cvega-matos@ph.lacounty.gov