



# TRANSITIONAL HOUSING: IS IT A NECESSARY SERVICE FOR GETTING PEOPLE INTO CARE?

Walter Samuel, Joy Winslow, Dale Brewer  
Greater Baltimore HIV Health Services Planning Council

Joseph Reed  
InterGroup Services, Inc.





## **LEARNING OBJECTIVES:**

- To understand the complexities of an HIV population with co-morbid conditions resulting from homelessness and poverty.
- To explore difficult strategies implemented through standards of care and service programs to address the needs of this specific community.
- To better understand some of the community's perspectives related to the importance of this issue.

# QUICK FIRE QUIZ:

About how many people are homeless on a given night in Baltimore?



A) 260

B) 1,000

C) 1,500

D) 3,000

Questions courtesy of Health Care for the Homeless, Baltimore, MD

# QUICK FIRE QUIZ:

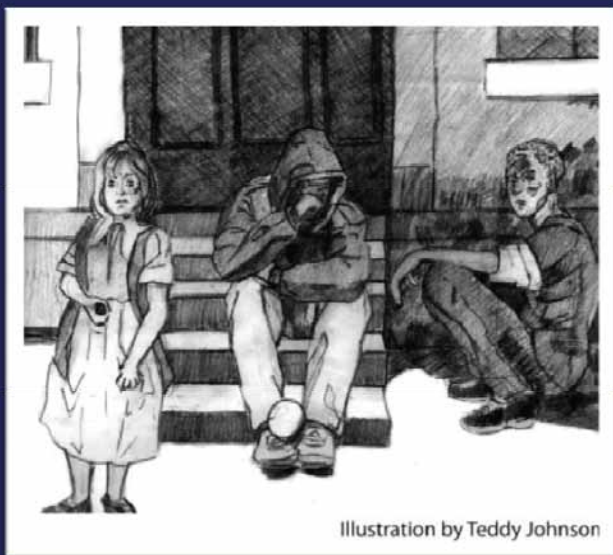
Of the 813 PLWH/A interviewed in 2009 for Baltimore's needs assessment survey, what percentage said they did not have permanent housing?

A) 10%

B) 29%

C) 15%

D) 3%



Questions courtesy of Health Care for the Homeless, Baltimore, MD

# BALTIMORE PC: HISTORY

- Standards of care for services funded under the Ryan White Act.
- Housing services: (HRSA) provision of short-term assistance to support emergency, temporary, or transitional housing to enable an individual or family to gain or maintain medical care.



# BALTIMORE PC: HISTORY

- Minority AIDS Initiative – Development of life skills enrichment service.
  - De-funded with RWTMA 2006 requirement of 75/25.
- Last 5 years
  - Ryan White Treatment Modernization Act of 2006.
  - Housing related referral services are no longer funded under the housing category.
  - Emergency rental assistance from EFA.



# BALTIMORE PC: STANDARDS

- Housing assistance is short-term or emergency financial assistance to support temporary and/or transitional housing, or assistance to prevent eviction or interruption in utility services to enable the HIV-positive individual to gain and/or maintain medical care and utility assistance.
  - Linked to medical or support services.
  - Certified as essential to a client's ability to gain or maintain access to HIV-related medical care or treatment.
  - supported in a housing service plan.



# BALTIMORE PC: STANDARDS

Housing assistance may include:

- Emergency rental assistance.
  - Emergency housing stabilization.
  - Emergency eviction abatement.
- Emergency utility assistance.
- Transitional housing.

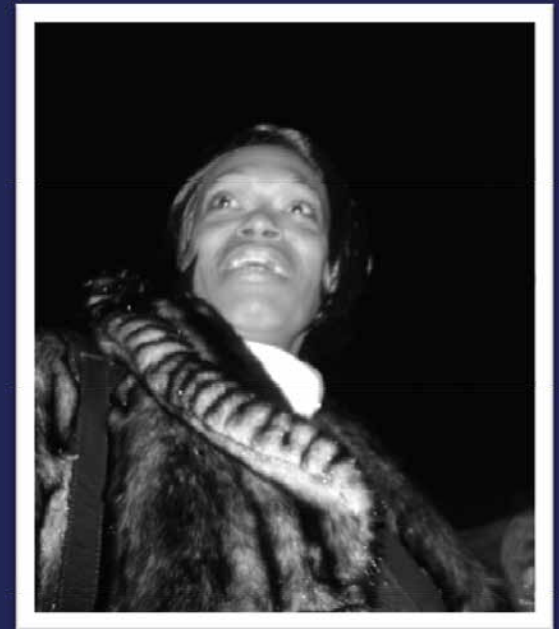




# PLWHA COMMITTEE

The committee:

- Brings consumer issues and concerns to planners.
- Produces position papers.



# REALITY CHECK



# REALITY CHECK

Waiting to  
get on  
HOPWA's  
list

3 yrs

In  
HOPWA's  
list waiting for  
voucher

1-2 yrs

Voucher in  
hand –  
finding  
housing

.5 yrs

# PLWHA COMMITTEE POSITION PAPER

- Response to the 24-month lifetime cap
- NO limit on the number of months a person should be provided housing.
- Temporary/transitional housing should be available until permanent housing is found.

# IN CLOSING

The reality is that it is not easy to be without housing and stay healthy. It is also not easy to get housing.

Policies should reflect what is truly needed by communities impacted by HIV/AIDS.



# THANK YOU

## CONTACT INFORMATION

GREATER BALTIMORE HIV  
HEALTH SERVICES PLANNING  
COUNCIL

InterGroup Services, Inc.

116 East 25<sup>th</sup> Street

Baltimore, MD 21218

Phone: 410-662-7253

Fax: 410-662-7254

E-mail: [igs@intergroupservices.com](mailto:igs@intergroupservices.com)

Web: [www.baltimorepc.org](http://www.baltimorepc.org)

Web: <http://balpc.intergroupinfo.com>

