



VIRTUAL  
**2020 NATIONAL  
RYAN WHITE  
CONFERENCE ON  
HIV CARE & TREATMENT**

# Implementing Evidence-Informed Interventions with Transgender Women to Improve HIV Health Outcomes

August 12, 2020

Coordinating Center for  
Technical Assistance

Alex Keuroghlian  
Joseph Stango

Birmingham AIDS Outreach

Destiny Clark

Henry Ford Health System &  
The Ruth Ellis Center

Latrice Ward

Presenter(s) has no financial interest to disclose.

This project is supported by the Health Resources and Services Administration's (HRSA) HIV/AIDS Bureau (HAB) of the U.S. Department of Health and Human Services (HHS) under grant number U69HA31067. The national Training and Technical Assistance is funded for \$5,324,429.00 and 0% financed with nongovernmental sources. This information or content and conclusions are those of the author and should not be construed as the official position or policy of, nor should any endorsements be inferred by HRSA, HHS or the U.S. Government.

- Learning Objectives
- E2i Project Overview
- Intervention Summary
- E2i Intervention Sites
- Q/A

## At the end of this session, participants will:

1. Understand major barriers to engagement in HIV care and viral suppression for transgender women
2. Understand core elements of Healthy Divas and TWEET
3. Learn strategies for culturally tailored, sustainable, and rapid implementation of these evidence-informed interventions for women of Transgender experience with HIV



# E2i Project Overview

Four-year initiative to facilitate the implementation of evidence-informed interventions to reduce HIV health disparities and improve HIV-related health outcomes in four focus areas:

- Improving HIV health outcomes for transgender women with HIV
- Improving HIV health outcomes for Black men who have sex with men (MSM) with HIV
- Integrating behavioral health with primary medical care for people with HIV
- Identifying and addressing trauma among people with HIV

1. Rapid implementation of effective and culturally tailored evidence-informed interventions that address social determinants of health
2. Widespread dissemination of findings, lessons learned, and implementation toolkits to promote replication of successful evidence-informed interventions across the Ryan White HIV/AIDS Program (RWHAP)

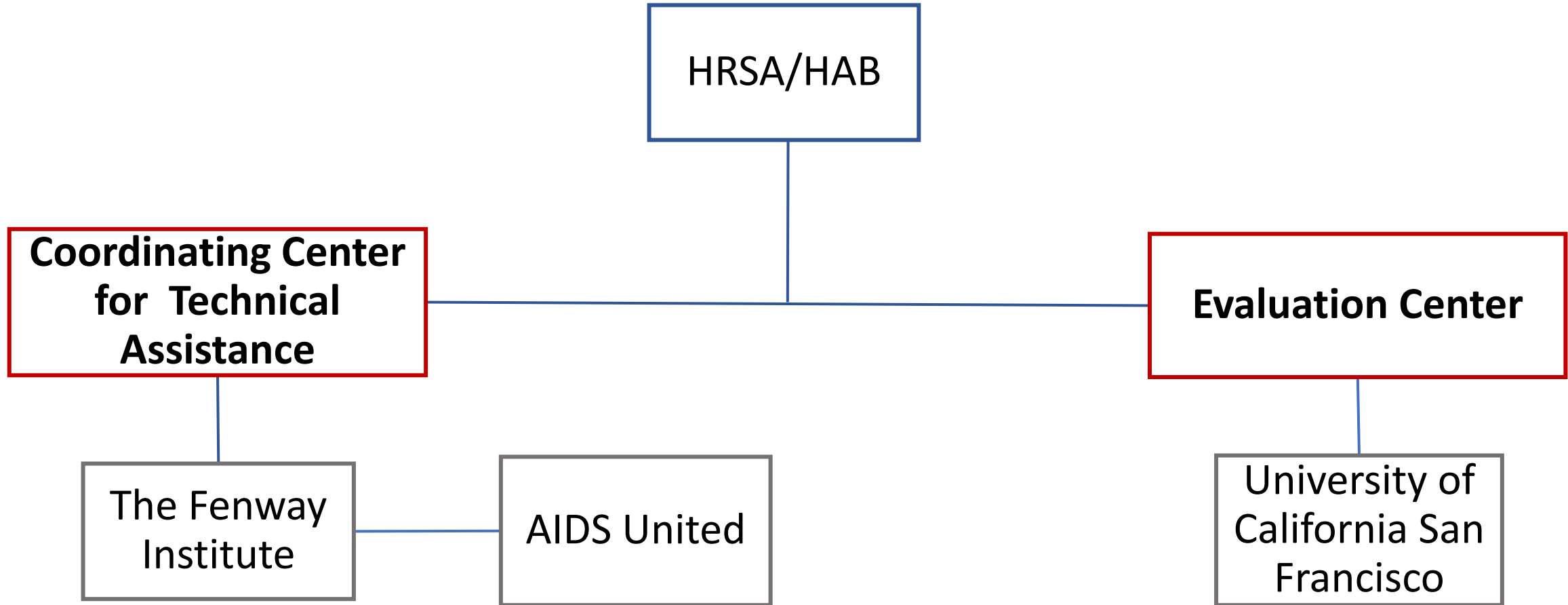
# Project Goals



- Provide technical assistance (TA) to 26 RWHAP sites to help facilitate the successful implementation of evidence-informed interventions
- Evaluate the impact of intervention implementation on HIV health outcomes



# E2i Program Structure



# E2i Intervention Sites



## Transgender Women

### Healthy Divas

- CAL-PEP (CA)
- Rutgers New Jersey Medical School (NJ)
- Birmingham AIDS Outreach Inc. (AL)

### Transgender Women Engagement and Entry to Care Project (T.W.E.E.T.)

- CrescentCare (LA)
- Henry Ford Health System (MI)
- Centro Ararat (PR)

## Black MSM

### Client-Oriented New Patient Navigation to Encourage Connection and Treatment (CONNECT)

- AIDS Taskforce of Greater Cleveland(OH)

### Tailored Motivational Interviewing (Tailored MI)

- HOPE Center (GA)
- Broward House, Inc. (FL)
- University of Mississippi Medical Center (MS)

### Text Messaging Intervention to Improve Antiretroviral Adherence Among HIV Positive Youth (TXTXT)

- UNIFIED-HIV Health & Beyond (MI)
- SUNY HEAT Program (NY)

## Trauma Informed Care

### Trauma-Informed Approach & Coordinated HIV Assistance and Navigation for Growth and Empowerment (TIA/CHANGE)

- Alaska Native Tribal Health Consortium (AK)
- Chicago Women's AIDS Project (IL)

### Cognitive Processing Therapy

- Western North Carolina Community Health (NC)
- Positive Impact Health Centers (GA)

### Seeking Safety

- Multicultural AIDS Coalition (MA)
- The Regents of the Univ. of Calif., U.C. San Diego (CA)

## Behavioral Health Integration

### Buprenorphine

- Consejo de Salud de Puerto Rico Inc. dba Med Centro (PR)
- Greater Lawrence Family Health Center (MA)

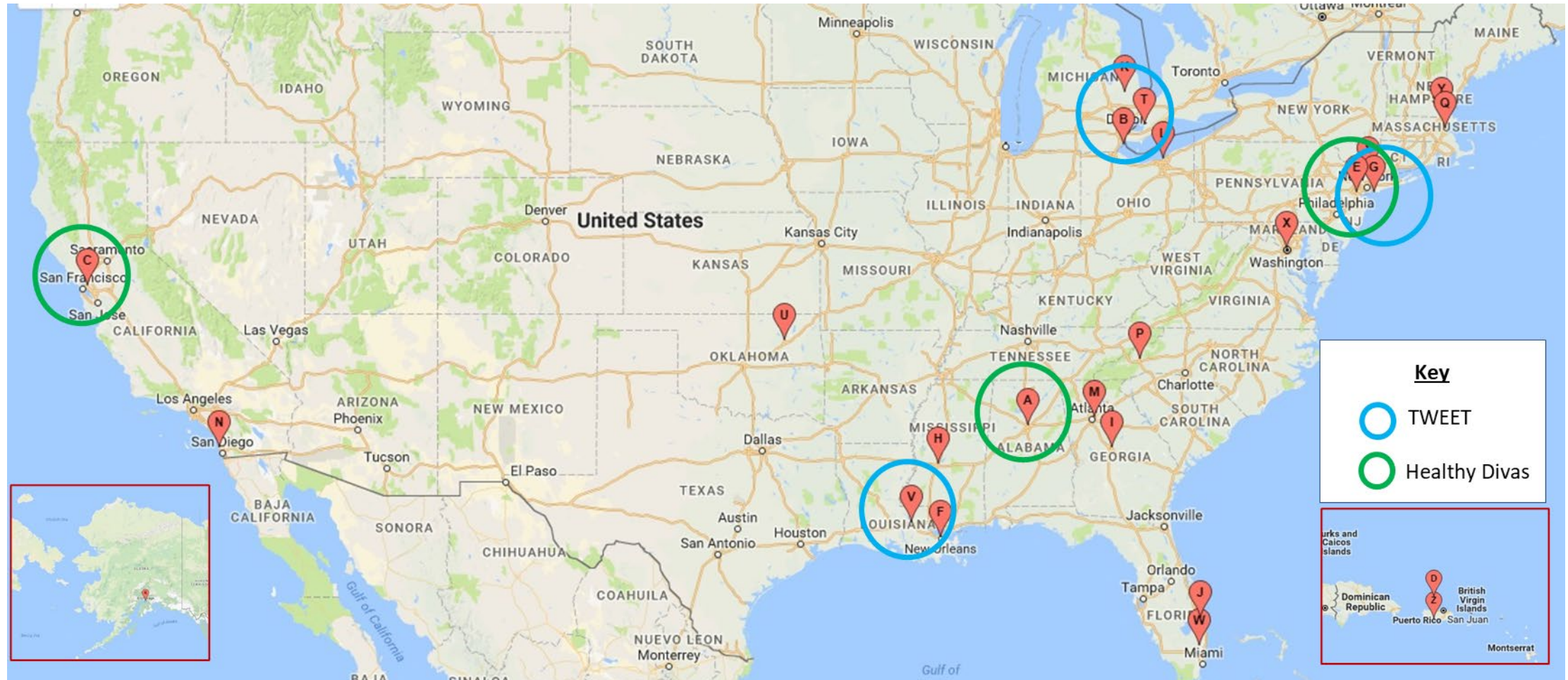
### Collaborative Care Management (CoCM)

- La Clinica del Pueblo, Inc (DC)
- Oklahoma State University Center Health Sciences (OK)
- Health Emergency Lifeline Programs (MI)
- Our Lady of the Lake Hospital, Inc. (LA)

### Screening, Brief Intervention and Referral to Treatment (S.B.I.R.T.)

- The Poverello Center Inc. (FL)
- North Jersey Community Research Initiative (NJ)

# Geographic Distribution of Sites





# The Coordinating Center for Technical Assistance (CCTA)



VIRTUAL  
2020 NATIONAL  
RYAN WHITE  
CONFERENCE ON  
HIV CARE & TREATMENT



**Alex Keuroghlian,**  
MD, MPH  
Principal  
Investigator/  
Project Director



**Linda Marc, ScD,**  
MPH  
National  
Implementation  
Director



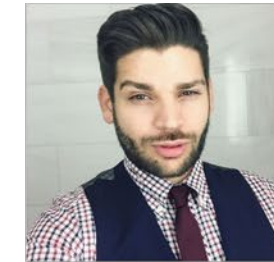
**Massah  
Massaquoi, MPH**  
National  
Implementation  
Manager



**Sarah Mitnick, BA**  
Operations  
Manager



**Sean Cahill, PhD**  
Director of  
Curriculum and  
Policy



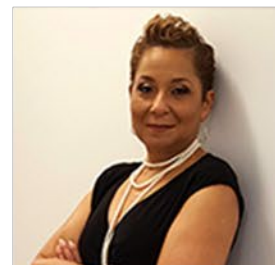
**Richard Cancio,**  
MPH  
Curriculum  
Manager



**Brian Shapiro**  
Program Assistant



**Jessie Milan Jr., JD,**  
President & CEO



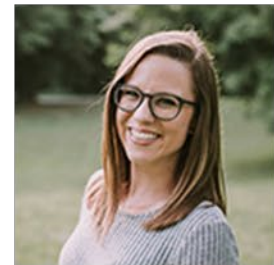
**Valarie Rochester**  
Vice President for  
Program Strategy



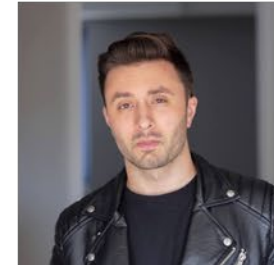
**Erin Nortrup,**  
LCSW  
Director of  
Program  
Operations



**Alicia Downes,**  
LCSW  
Sr. Program  
Manager



**Hannah Bryant,**  
MPH  
Program Manager



**Joseph Stango**  
Program Manager



**Bryan Thompson**  
Program Associate

# The Evaluation Center (EC)



VIRTUAL  
2020 NATIONAL  
RYAN WHITE  
CONFERENCE ON  
HIV CARE & TREATMENT



**Janet Myers, PhD**  
Principal  
Investigator and  
Trauma Liaison



**Greg Rebchook,  
PhD**  
Co-Investigator and  
Transwomen  
Liaison



**Carol Dawson-  
Rose, PhD, RN**  
Co-Investigator and  
Trauma Liaison



**Beth Bourdeau,  
PhD**  
Project Manager  
and BHI Liaison



**Kim Koester, PhD**  
Qualitative  
Evaluator and  
BMSM Liaison



**Mary Guzé, MPH**  
Data Manager



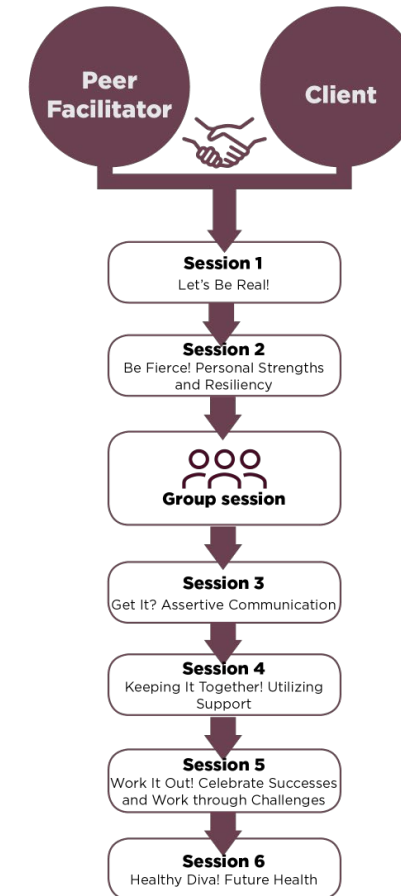
**Starley Shade, PhD**  
Quantitative  
Evaluator



# Intervention Summary

## Description & Core Elements:

- Gender affirmation model
- 6 individual sessions
- 1 group workshop
  - Peer facilitators
  - Health care providers



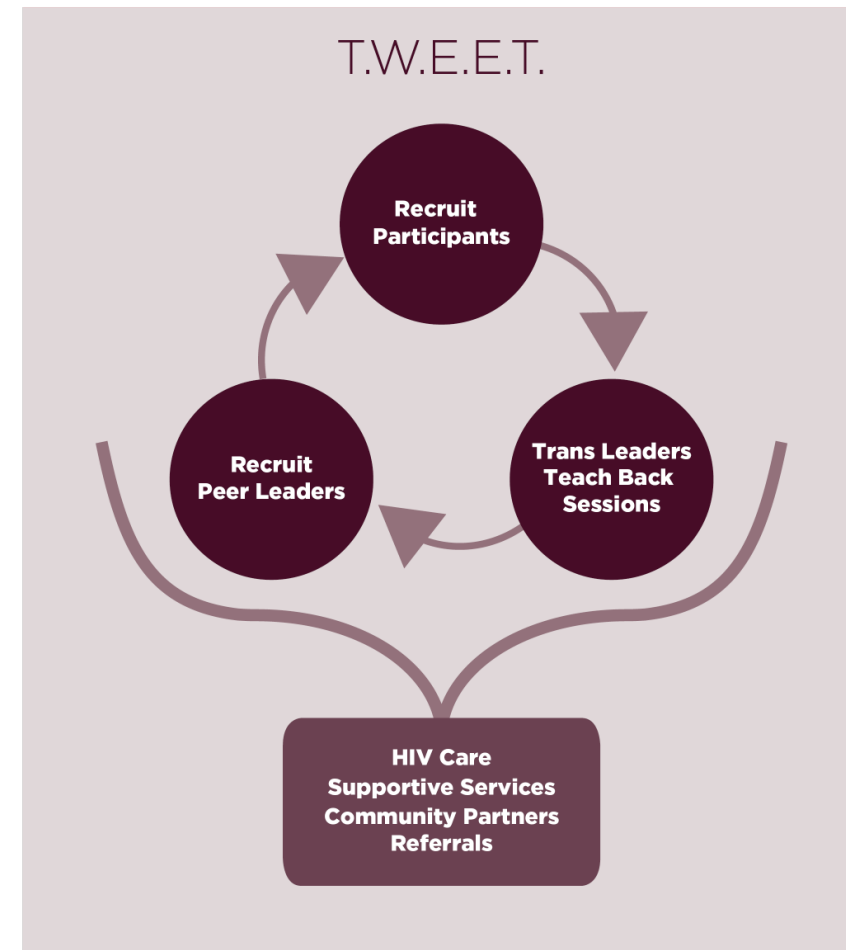
# Transgender Women Engagement and Entry to Care Project (TWEET)



VIRTUAL  
2020 NATIONAL  
RYAN WHITE  
CONFERENCE ON  
HIV CARE & TREATMENT

## Description & Core Elements:

- Peer Leaders
- Linkage to care
- 5 educational sessions







# Birmingham AIDS Outreach

Birmingham, Alabama

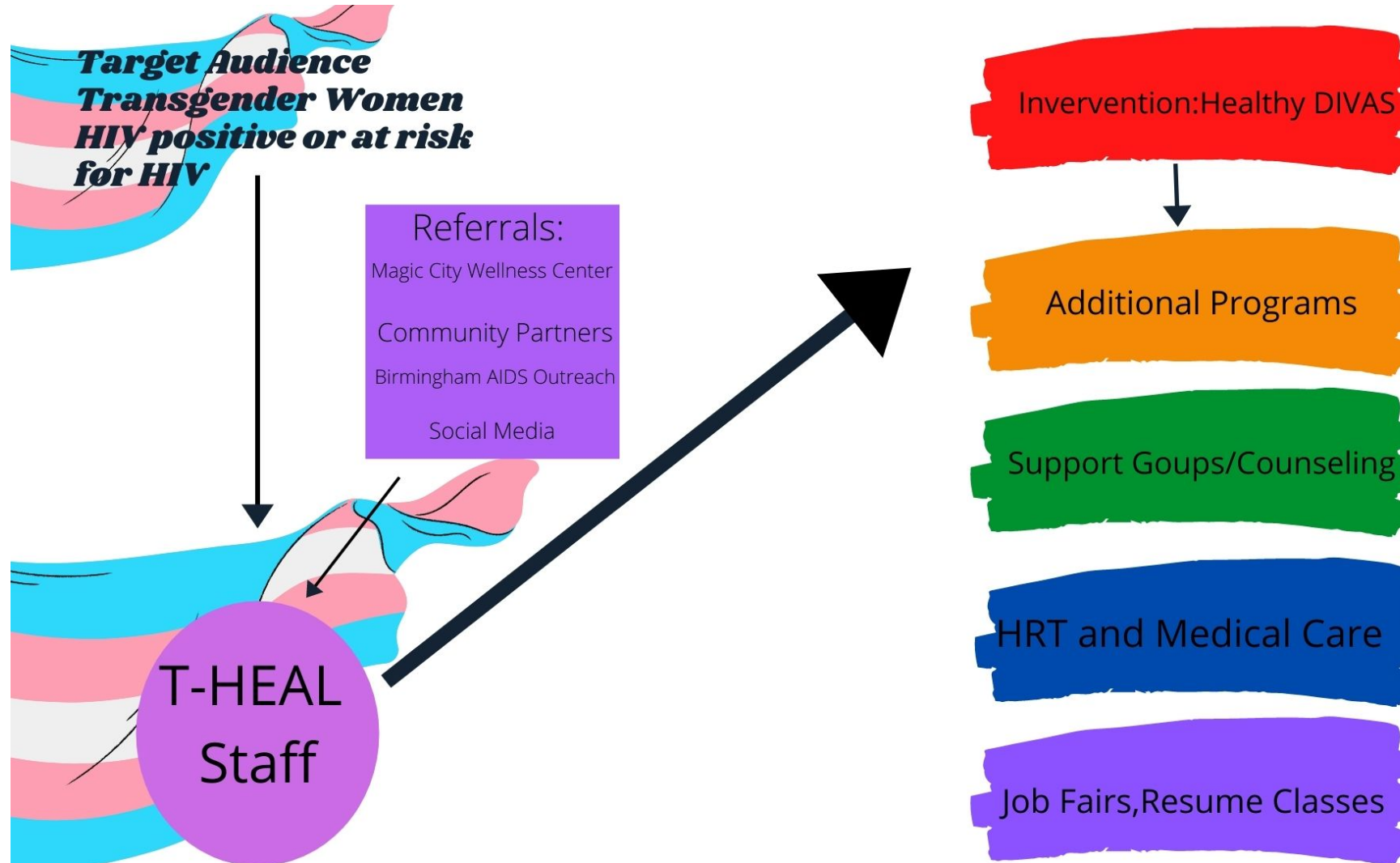
Destiny Clark

# Project Specific Aims



- During year one our program Transwomen Health Empowerment and Affirmation Learning (T-HEAL) proposed a goal of recruiting and enrolling 20 transgender women with HIV into the Healthy Divas intervention
- The site aims to implement Healthy Divas and provide supplemental support through enhanced contact in order to solidify linkage, retention, adherence, and viral suppression for transgender women
- The T-HEAL staff aims to provide logistical support for overcoming barriers to HIV care for Healthy Divas participants

# Model Intervention Delivery/ Process Flow



- ❑ Housing is an ever-present need in our community, like other large metro areas. The number of agencies that provide housing is small and the eligibility requirements can create additional barriers
  - Waiting lists are extensive
- ❑ Gender affirming employers are scarce. This exacerbates needs for transgender women in Birmingham as well
- ❑ Transportation needs also present significant issues
  - The need greatly outweighs the capacity of Birmingham's non-profit network

## ❑ Identifying Clients

- ❑ Most referrals to the T-HEAL project and Healthy Divas are received from the BAO staff, through RWHAP-funded case management services
- ❑ T-HEAL staff members have also done networking and recruitment through community relationships and outreach efforts

## ❑ Expanded Methods for Outreach & Enrollment

- ❑ T-HEAL uses promotional flyers posted in the community and via social media posts on the BAO Facebook page
- ❑ The team has also trained BAO and 1,917 clinic staff on the Healthy Divas intervention



# Henry Ford Hospital System & The Ruth Ellis Center

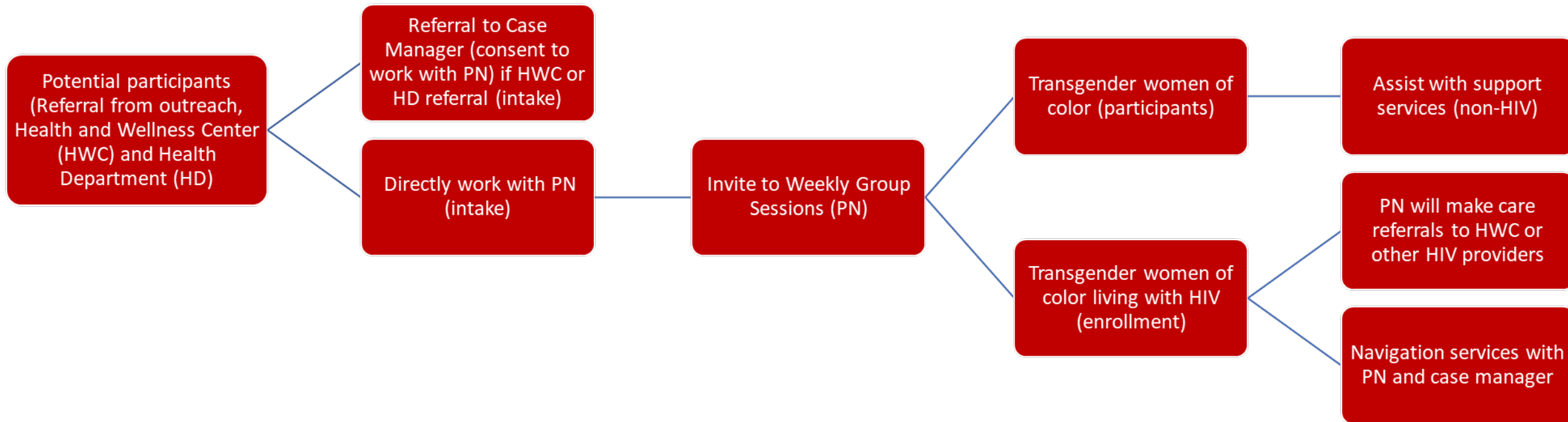
Detroit, MI  
Latrice Ward

# Project Specific Aims



- Enroll 75 transgender women of color with HIV in the project
- Conduct 90 peer-led Transgender Leaders Teach Back (TL-Teach Back) sessions over the two-year period
- Establish a Peer Navigator (PN) program to offer professional development opportunities for transgender women of color
- Create a weekly group TL-Teach Back program that allows for wellness education and discussion among transgender women of color

# Model Intervention Delivery/ Process Flow





# Challenges & Barriers



- ❑ Housing and transportation continue to be major barriers in Detroit
- ❑ Clients successfully completing all TWEET sessions
- ❑ Identification and training of Peer Leaders who can co-facilitate TWEET sessions
- ❑ Outreach to new clients

- ❑ Potential participants are identified via medical records
- ❑ Henry Ford Health System has developed relationships with local health departments and other medical care providers in the area, expanding their reach for outreach and recruitment
- ❑ Apply a stigma reduction strategy when conducting groups by offering the intervention for all transgender women regardless of HIV status

## Coordinating Center for Technical Assistance

- Sean Cahill, PhD
- Alicia Downes, LMSW
- Alex Keuroghlian, MD, MPH
- Linda Marc, ScD, MPH
- Massah Massaquoi, MPH
- Joseph Stango, BA

## Birmingham AIDS Outreach (BAO)

- Destiny Clark

## Henry Ford Hospital System & The Ruth Ellis Center

- Latrice Ward



# Q&A

# How to Claim CE Credit



- If you would like to receive continuing education credit for this activity, please visit: [ryanwhite.cds.pesgce.com](https://ryanwhite.cds.pesgce.com)