

# Same Day Start

– Linkage to Care and Initiating  
Antiretrovirals After Rapid Reactive HIV  
Result

Kaley Garza, MSW

Kansas City CARE Health Center

20  
22

NATIONAL  
**RYAN WHITE**  
CONFERENCE  
ON HIV CARE & TREATMENT

# Disclosures

Kaley Garza has no relevant financial interests to disclose.

Disclosure will be made when a product is discussed for an unapproved use.

This continuing education activity is managed and accredited by AffinityCE, in collaboration with the Health Resources and Services Administration (HRSA), LRG, and AffinityCE. AffinityCE, LRG and HRSA staff, as well as planners and reviewers, have no relevant financial interests to disclose. AffinityCE adheres to the ACCME's Standards for Integrity and Independence in Accredited Continuing Education. Any individuals in a position to control the content of a CME activity, including faculty, planners, reviewers, or others, are required to disclose all relevant financial relationships with ineligible entities (commercial interests). All relevant conflicts of interest have been mitigated prior to the commencement of the activity.

There was no commercial support for this activity.

# Learning Objectives

**At the conclusion of this activity, participants will be able to:**

- 1. Identify plans and processes to have in place for Same Day Start**
- 2. Understand key components of a Same Day Start appointment**
- 3. Understand the positive impact of Same Day Start on VLS rates**

# Why Same Day Start?

1. Increase Linkage to Care, HRSA 30-day Measure
2. Treatment as Prevention, U=U
3. Motivates patients to engage in care

20  
22

NATIONAL  
**RYAN WHITE**  
CONFERENCE  
ON HIV CARE & TREATMENT

# Planning for Success 1

- **Gather input and suggestions from:**
  - Clinical Team
  - Pharmacy
  - Case Management
  - Peer Educators
  - Patient Services and Billing

# Planning for Success 2

## Clinical Team and Pharmacy

- Standing orders for labs and prescriptions
  - Baseline safety labs and HIV Confirmatory
  - Biktarvy, Symtuza, Delstrigo, Dovato
- How will medication be provided?
  - Samples? Vouchers? PAPs? ADAP?
- Direct Observation Therapy
- Provider HIV Education

# KC CARE Standing Orders

## At Minimum:

- HIV Confirmatory

## Additional labs drawn, pending client's coverage for lab work

- CBC with differential
- Complete metabolic panel
- CD4 count
- HIV viral load
- HLA 857
- RPR
- HepA Ab total
- HBsAg, HbsAb, HBcAb
- HCV Ab
- Urinalysis
- HIV GenoSure Prime

## Case Management and Peer Education

- Support for Client during the appointment
  - Linkage to Care and Peer Educator present
- Connection to Ryan White Services, when eligible
  - Intake completed and enrollment scheduled
  - Contact plan in place
- Education and Resources



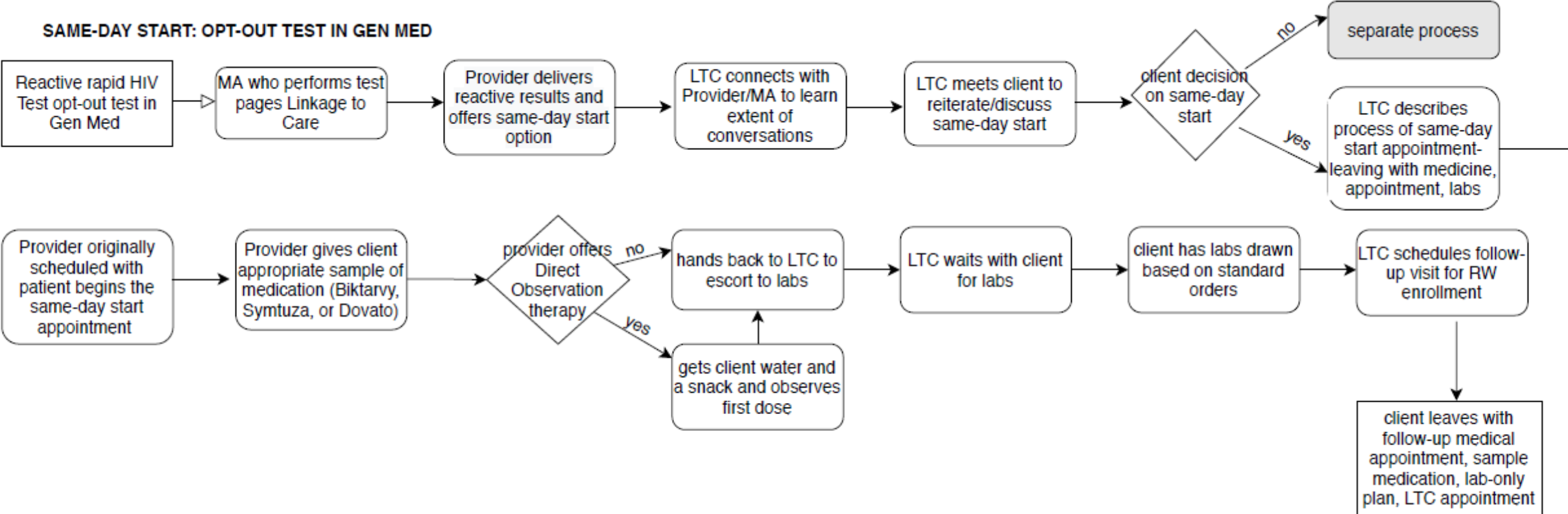
# Planning for Success 4

## Patient Services and Billing

- Registration for Appointment
- Patient account in EMR
- Payor Source for appointment and lab work
  - Health Coverage or Sliding Fee Application

# KC CARE Same Day Start Flow

**SAME-DAY START: OPT-OUT TEST IN GEN MED**



# Key Components of Appointment

- Connect with Linkage to Care
- Meet with Peer Educator
- Direct Observation Therapy
- Provide education
- Complete lab work

- **Client should leave the appointment with**
  - A contact plan with Linkage to Care
  - An appointment to enroll in Ryan White services
  - A 2-week follow up medical appointment scheduled with an HIV provider
  - A supply of ARVs

- 79% participation (34 of 43 rapid reactive results)
  - 4 patients had negative confirmatory results, excluding those we had **87%** participation from confirmed positives.
- 88% achieved VLS (30 of 34 participants)
  - 50% (15 of 30) achieved VLS within 60 days of rapid reactive result
- 60% VLS at 1 year mark (9 of 15)

# Questions?

[Kaleyg@kccare.org](mailto:Kaleyg@kccare.org)

# How To Claim CE Credit

If you would like to receive continuing education credit for this activity, please visit:

[ryanwhite.cds.pesgce.com](https://ryanwhite.cds.pesgce.com)

## SAME-DAY START: OPT-OUT TEST IN GEN MED

### Process 1

1. Reactive rapid HIV Test opt-out test in Gen Med
2. MA who performs test pages Linkage to Care
3. Provider delivers reactive results and offers same-day start option
4. LTC connects with Provider/MA to learn extent of conversations
5. LTC meets client to reiterate/discuss same-day start
6. Client decision on same-day
  - o If no, then, separate process
  - o If yes then LTC describes process of same-day start appointment: leaving with medicine, appointment, labs.

### Process 2

1. Provider originally scheduled with patient begins the same-day start appointment
2. Provider gives client appropriate sample of medication (Biktarvy, Symtuza. or Dovato)
3. Provider offers direct observation therapy
  - a. If no, then hands back to LTC to escort to labs.
  - b. If yes then provider gets a glass of water and observes first dose then hands back to LTC to escort to labs.
4. LTC waits with client for labs
5. Client has labs drawn based on standard orders
6. LTC schedules follow-up visit or RW enrollment
7. Client leaves with follow-up medical appointment, sample medication, lab-only plan and LTC appointment.