

HIV Outbreak in West Virginia: The Importance of Collaboration and Partnerships



Kara Willenburg, MD, FACP
Chief, Infectious Diseases
Marshall University School of Medicine
Huntington, West Virginia

Melanie Nace
Medical Case Manager
West Virginia Ryan White Part B Program
Huntington, West Virginia

Anndrea L. Rogers, BS, MT(ASCP)
Director, WVU Positive Health Clinic
Ryan White Parts C and D
Morgantown, West Virginia

20
22

NATIONAL
RYAN WHITE
CONFERENCE
ON HIV CARE & TREATMENT

Disclosures

Kara Willenburg has no relevant financial interests to disclose.

Melanie Nace has no relevant financial interests to disclose.

Anndrea L. Rogers has no relevant financial interests to disclose.

Disclosure will be made when a product is discussed for an unapproved use.

This continuing education activity is managed and accredited by AffinityCE, in collaboration with the Health Resources and Services Administration (HRSA), LRG, and AffinityCE. AffinityCE, LRG and HRSA staff, as well as planners and reviewers, have no relevant financial interests to disclose. AffinityCE adheres to the ACCME's Standards for Integrity and Independence in Accredited Continuing Education. Any individuals in a position to control the content of a CME activity, including faculty, planners, reviewers, or others, are required to disclose all relevant financial relationships with ineligible entities (commercial interests). All relevant conflicts of interest have been mitigated prior to the commencement of the activity.

There was no commercial support for this activity.

Learning Objectives

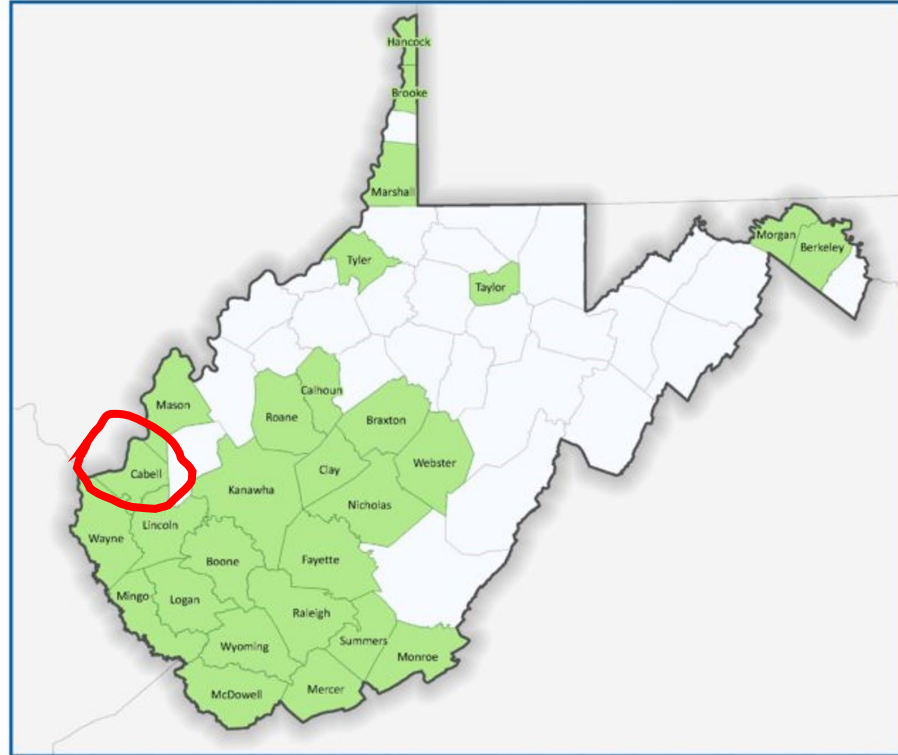
At the conclusion of this activity, participants will be able to:

1. Identify partners and facilitate relationships in a community to facilitate the diagnosis of HIV, linkage to care of people living with HIV, and prevention of transmission HIV in an outbreak setting.
2. Design and implement an innovative and flexible response to an HIV outbreak amongst persons afflicted with addiction
3. Format an HIV outbreak response in a setting of limited resources.

Outline

- PrEP
- Testing
- Treatment
- Incentives
- Support & Coordination
 - MAT
 - Transportation
 - ID, Insurance, Housing
 - SSP

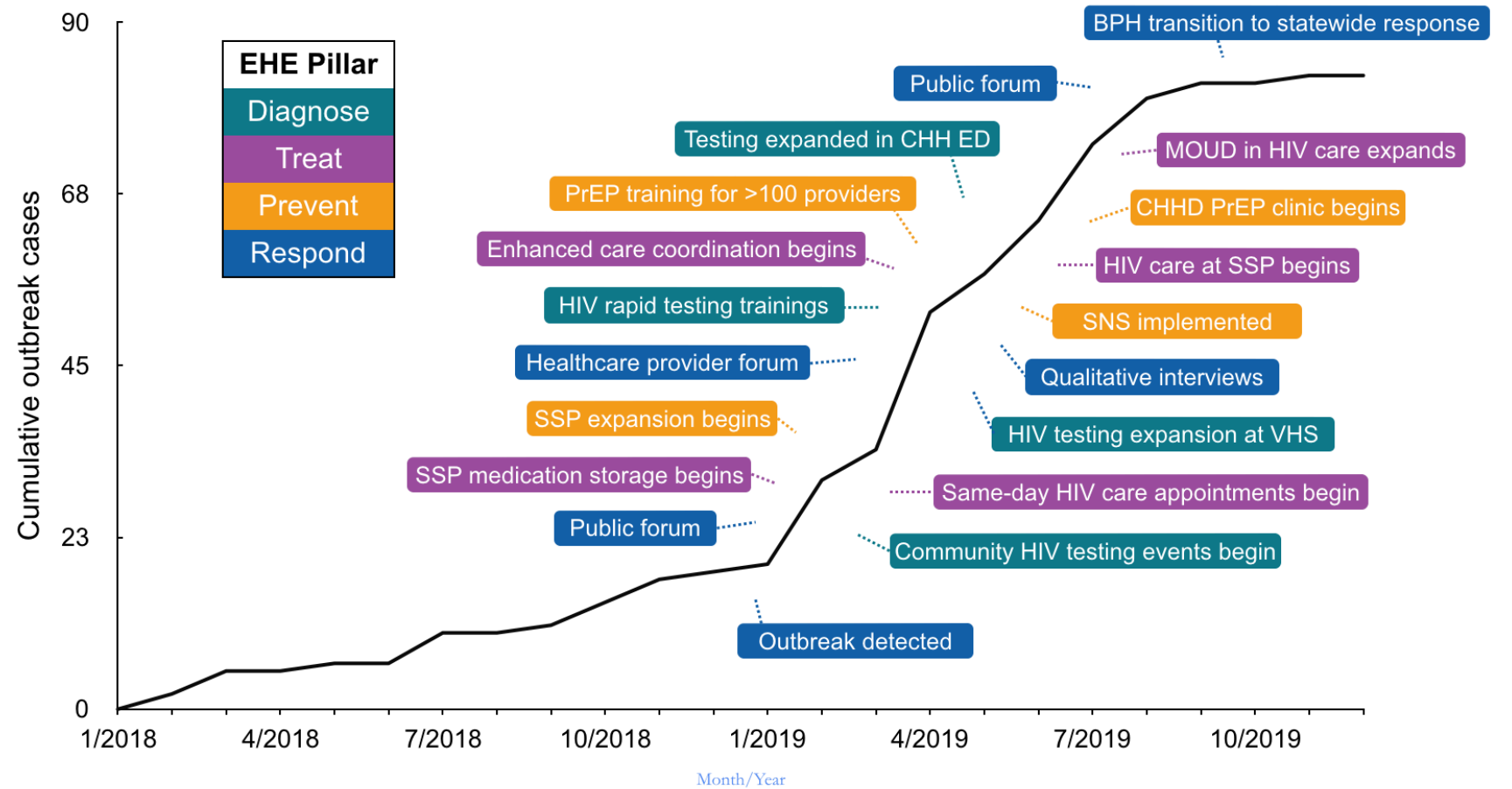
County-level Vulnerability to Rapid Dissemination of HIV/HCV Infection Among Persons Who Inject Drugs



Notes: Map and Analysis provided by the Geospatial Research, Analysis, and Services Program (GRASP), Div of Toxicology and Human Health Sciences, ATSDR (2015). Data Sources: American Community Survey 2012-2013; DEA ARCOS 2013; NCHS/NVSS 2012-2013; SAMHSA DATA 2000 Program Info 2014.

Vulnerable Counties and National Ranks (from 1-220)									
McDowell	2	Fayette	27	Brooke	76	Lincoln	121	Roane	165
Mingo	7	Morgan	44	Mason	81	Cabell	122	Marshall	182
Wyoming	16	Monroe	47	Calhoun	90	Taylor	133	Berkeley	205
Raleigh	18	Hancock	49	Nicholas	98	Mercer	147	Kanawha	209
Logan	20	Clay	60	Summers	110	Braxton	150		
Boone	22	Wayne	62	Webster	113	Tyler	162		

2019 Outbreak Response



Timeline – Cabell County

Feb 12 2019
Cabell HD Testing Event
7 New HIV Positives Identified

HEALTH ADVISORY #1 Increase in New HIV Infections Among Persons Who Inject Drugs

April 2019
New Protocol – INSTI
Trained Federal DIS

HEALTH ADVISORY #2 HIV Infections Among Persons Who Inject Drugs -- Additional Area

Oct 2019
Community Based Training with caveat

April 2020
HH Training cancelled due to Covid

Apr 2021
HH Training (Add'l staff)

Jan 2022
Anonymous testing project begun among PWID

Feb 19 2019
HD trained nurses rapid-rapid HIV testing algorithm

June-Nov 2019
BPH staff stationed at HH to offer testing

Oct 2019
Collaboration establishing Community Rapid Testing / Linkage to Care

Feb 2020
Harmony House (HH) Rapid HIV Testing Certificate

Oct 2020
HH OraQuick Oral Fluid Training

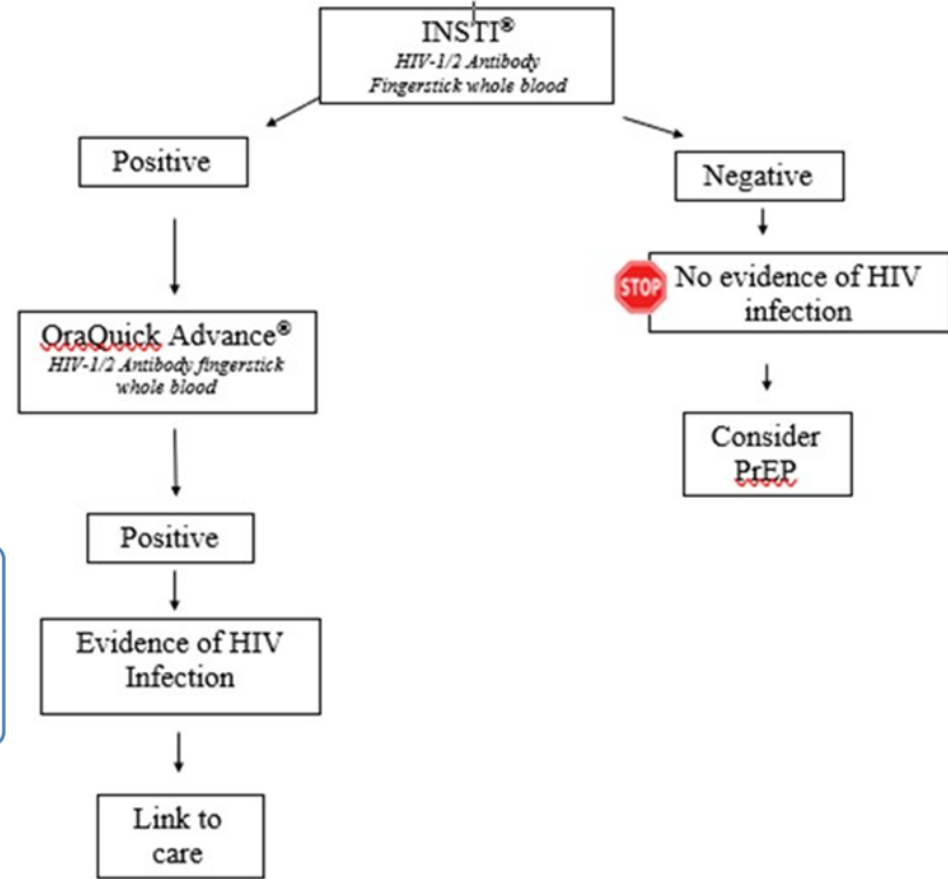
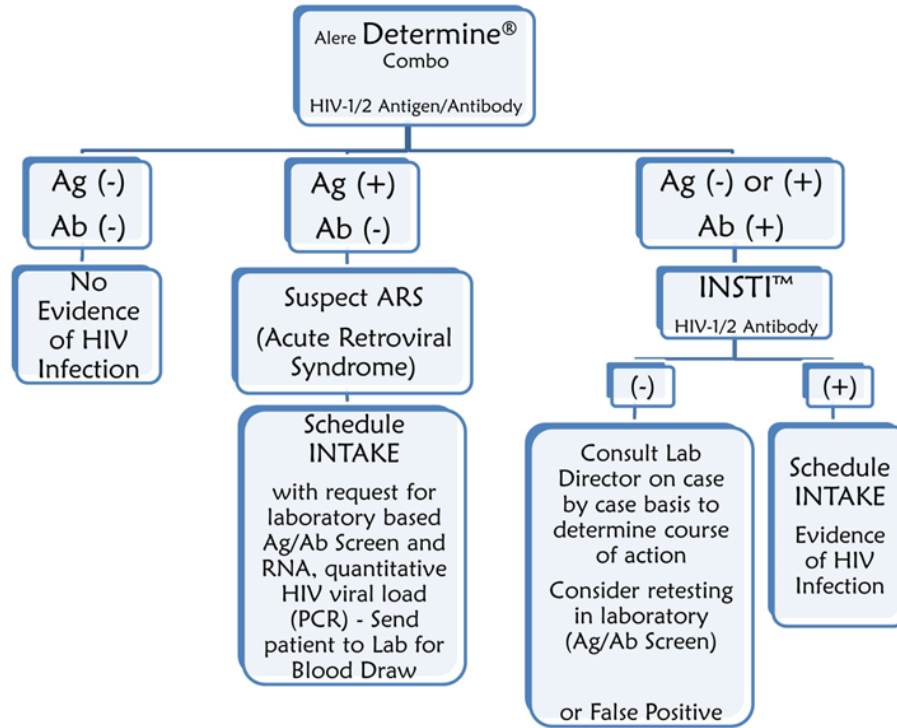
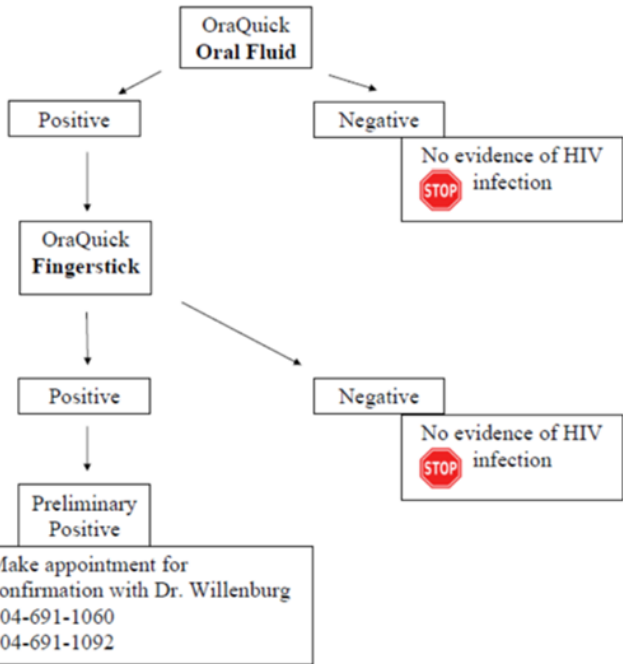
June 2021
INSTI fingerstick training HH 19 staff

May 2022
Cabell EMR - 3 questions Automatic HIV Request

August 2022

Changing Algorithms

**ORAQUICK ADVANCE®
RAPID HIV TESTING FLOWCHART**
CLIA ID NUMBER 51D0235184



Thank You!

Please feel free to contact Anndrea (Anndy) Rogers for information on information presented

arogers@hsc.wvu.edu

How To Claim CE Credit

If you would like to receive continuing education credit for this activity, please visit:

ryanwhite.cds.pesgce.com