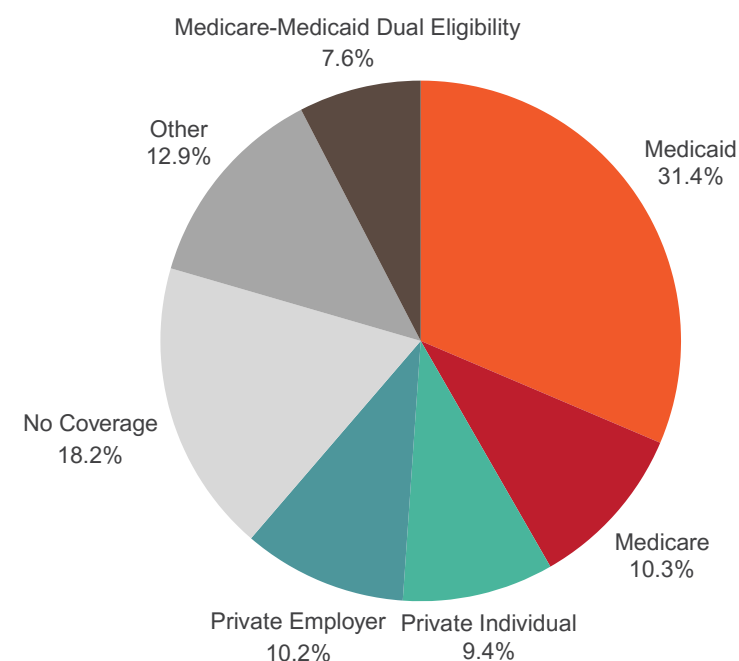
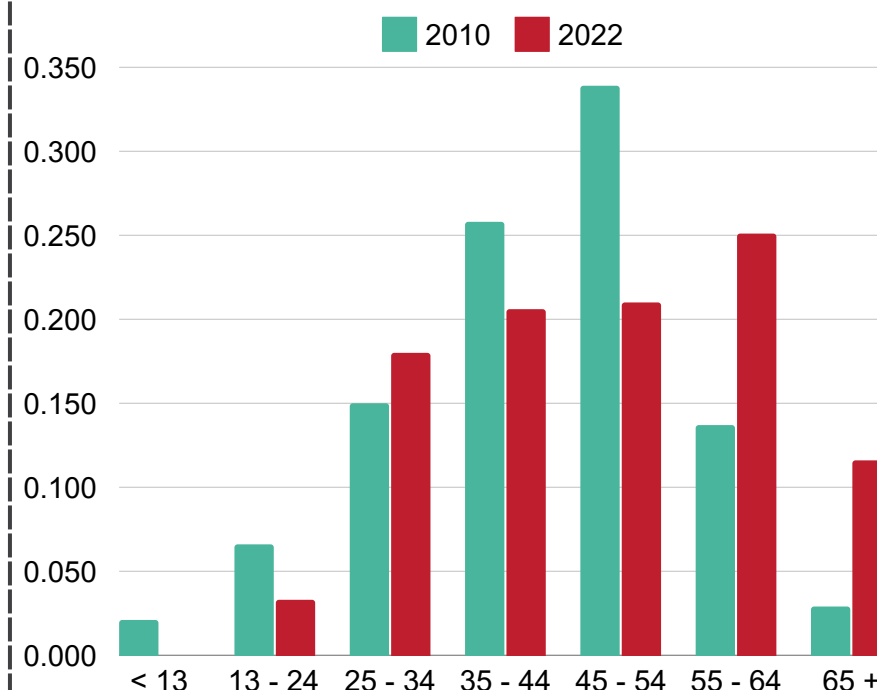


Medicare Coverage and Aging for People with HIV

Sources of Health Care Coverage for RWHAP Clients (2022)



RWHAP Clients by Age Group (2010 and 2022) - U.S. and 3 territories



Common Enrollment Challenges

- Avoiding late enrollment penalties
- Deferring enrollment in one or more Medicare Parts if working past age 65 and keeping employer-sponsored insurance
- Transitioning to Medicare from another form of health coverage, such as Marketplace
- Understanding how to support clients who are dually eligible for Medicare and their state Medicaid program

Enrollment Best Practices

- Ensure continuity of coverage, including existing providers and medications
- Actively enroll in Medicare
- Enroll when first eligible to avoid late enrollment penalties
- Provide one-on-one enrollment support by partnering with your local [State Health Insurance Assistance Program \(SHIP\)](#) or becoming a SHIP-certified counselor

Overview of the ACE TA Center



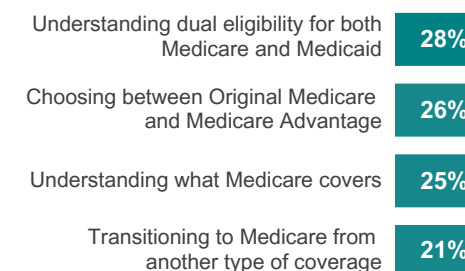
Webinars by the numbers over the last 5 years



Evaluation Key Findings

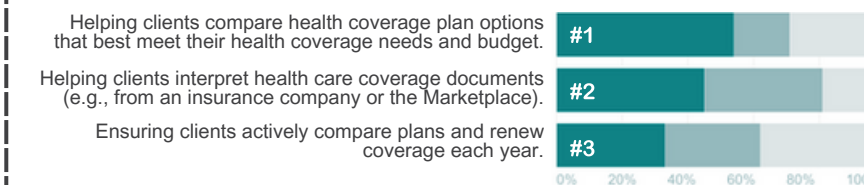
1

Organizations report understanding the basics of Medicare and Medicare-Medicaid Dual Eligibility to be a top challenge.



2

Organizations report needing training and TA on assisting clients with comparing Medicare plan options.



For health departments, identifying primary care and specialty providers was another highly-ranked need.



3

ACE Medicare-focused tools continue to be a highly utilized and valued resource.

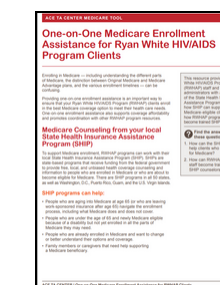
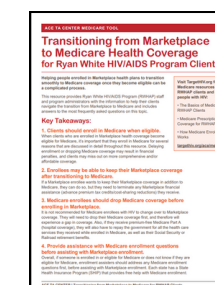
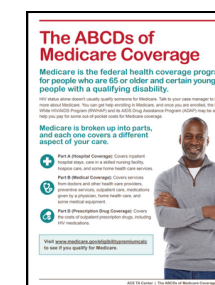
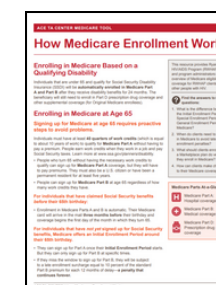
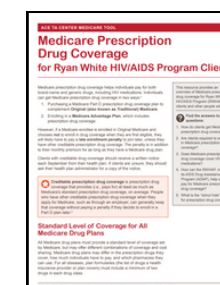
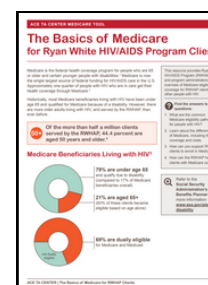
73%

of respondents used an ACE resource related to Medicare.

"[Our enrollment team] are also grateful for your Medicare training and documentation they use [and] share with clients."

— RWHAP Part B Recipient, Program Director

ACE TA Center Medicare Resources



Contact Us!
targethiv.org/ace
acetacenter@jsi.com

References

- HRSA HIV AIDS Bureau, 2022, Ryan White HIV/AIDS Program (RWHAP) Annual Data Report, <https://ryanwhite.hrsa.gov/sites/default/files/ryanwhite/data/rwhap-annual-client-level-data-report-2022.pdf>
- ACE TA Center, 2023, ACE TA Center Needs Assessment Report, <https://targethiv.org/sites/default/files/media/documents/2024-01/ACE%20Needs%20Assessment%202023.pdf>

This resource is supported by the Health Resources and Services Administration (HRSA) of the U.S. Department of Health and Human Services (HHS) as part of an award totaling \$375,000 with 0 percentage financed with nongovernmental sources. The contents are those of the author(s) and do not necessarily represent the official views of, nor an endorsement, by HRSA, HHS or the U.S. Government. For more information, please visit HRSA.gov.