



Peer Learning Opportunity: Conducting Effective Needs Assessments to Support Integrated Planning

December 11, 2024

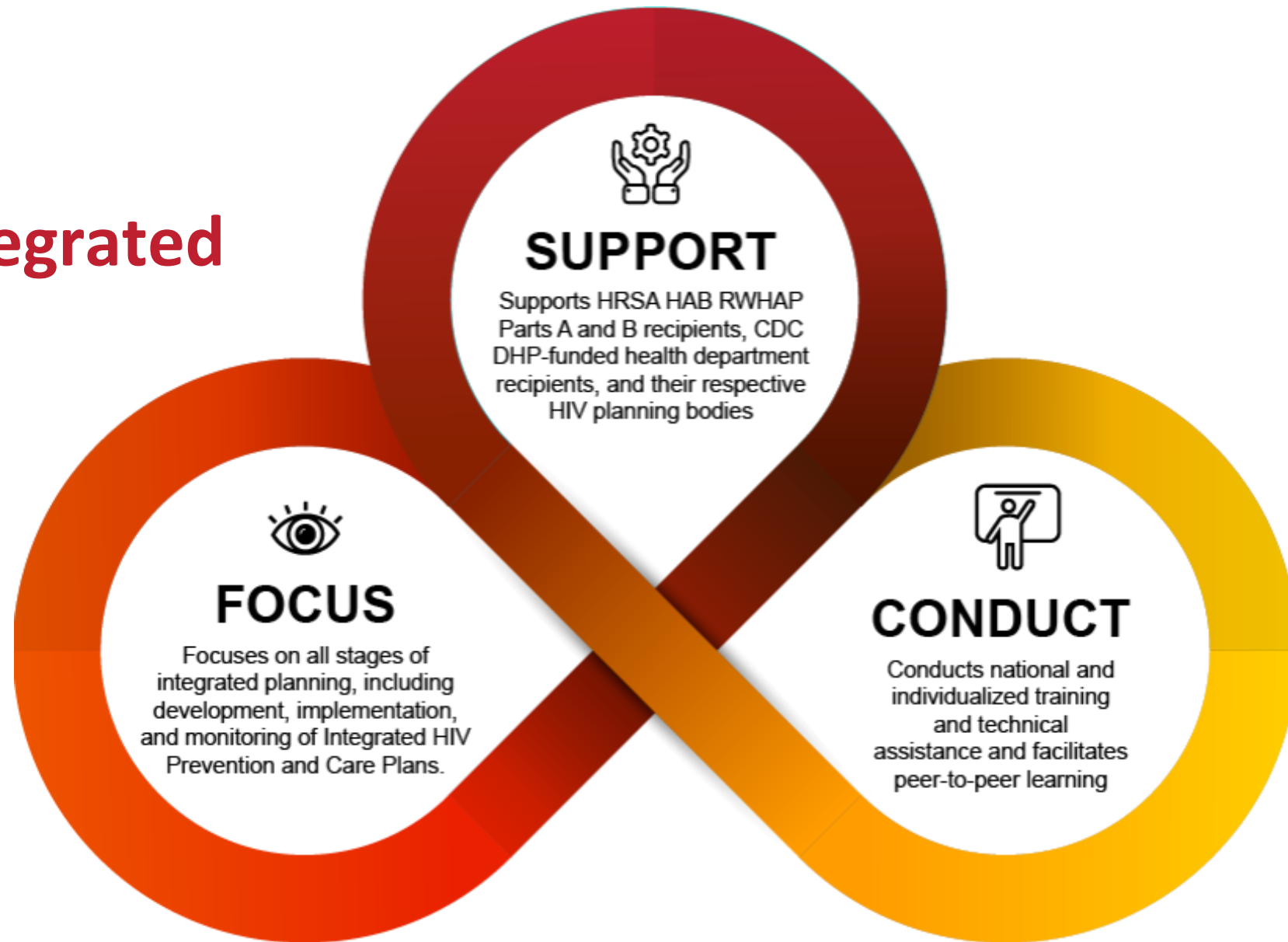
3:00 - 4:00 PM ET



INTEGRATED HIV/AIDS PLANNING
TECHNICAL ASSISTANCE CENTER



About the Integrated HIV/AIDS Planning Technical Assistance Center



Agenda

- At-A-Glance: 2027-2031 Integrated HIV Prevention and Care Plan Guidance
- Needs assessments basics
- Discussion!



Event objectives

After this event, participants will be able to:

- Understand how to design and implement one new strategy to diversify needs assessment methods.
- Identify at least one common recruitment challenge and related strategy for reaching a priority population.
- Incorporate whole person and syndemic models of care into the Needs Assessment process.

**At-A-Glance:
Integrated HIV
Prevention and Care
Plan Guidance for
2027-2031**



2027-2031 Integrated Plan Guidance

- Submission due June 30, 2026
- Submissions need to include:
 - CY 2027 – 2031 Integrated Plan that includes all components outlined in Guidance
 - A completed *CY 2027 – 2031 Integrated Prevention and Care Plan Guidance Checklist*
 - Signed letter from all jurisdictional HIV planning groups/bodies indicating concurrence, concurrence with reservations, or non-concurrence with the plan
- Dedicated Integrated Plan HRSA HAB email address: IntegratedPlanWorkgroup@HRSA.gov

Integrated HIV Prevention and Care Plan Guidance, including the Statewide Coordinated Statement of Need, CY 2027- 2031

Division of HIV/AIDS Prevention

National Center for HIV/AIDS, Viral Hepatitis, STD, and TB Prevention
Centers for Disease Control and Prevention

HIV/AIDS Bureau

Health Resources and Services Administration



At-A-Glance: 2027-2031 Integrated Plan Guidance

Similar Content as the 2022-2026 Guidance

- I. Introduction (instead of Executive Summary)
- II. Community Engagement and Planning Process
- III. Contributing Data Sets and Assessments
- IV. Situational Analysis
- V. Goals and Objectives
- VI. Integrated Planning Implementation, Monitoring and Jurisdictional Follow Up
- VII. Letters of Concurrence

At-A-Glance: 2027-2031 Integrated Plan Guidance

- Jurisdictions can use existing jurisdictional HIV plans (EHE, GTZ, etc.) to satisfy Integrated Plan requirements, as long as the submission
 - Addresses the broader needs of the geographic jurisdiction
 - Applies to the entire CDC and HRSA HAB HIV funding portfolio
 - Includes updates to existing activities
- Editable checklist that details the submission requirements and allows each jurisdiction to indicate whether it created new material or used existing material to meet each requirement of the Integrated Plan.

At-A-Glance: 2027-2031 Integrated Plan Guidance

- Section I is called the Introduction, rather than an Executive Summary.
 - Describe the Integrated Plan including the SCSN, and identify if it is an entirely new plan or if they are modifying or enhancing an existing plan.
- In Section III, the HIV Prevention, Care, and Treatment Resource Inventory must include provider information, funding sources, and provided services; however, the amount of funding for services is NOT required.
- In Section VI: 2027-2031 Integrated Planning Implementation, Monitoring and Jurisdictional Follow Up, jurisdictions to submit an Integrated Plan Workplan.
- More detailed information in the checklist about what to include

IHAP TAC TA Resources

Toolkit

- Guidance
- Checklist
- Epi Profile Guidance

Coming Soon!

- FAQ
- At-A-Glance
- Work plan Template
- Videos



Needs Assessments Basics

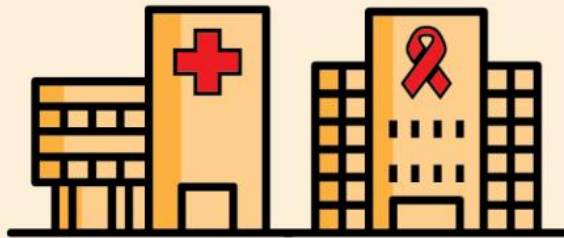


What is a needs assessment?

Learn about people with HIV who need services, what services they need, their experiences in seeking care, and their barriers to care



Learn about HIV core medical and support service providers in the service area, where they are located, what services they can provide, and what people with HIV groups they target and serve



Use what you have learned to determine gaps, make data-based decisions that improve the availability, accessibility, and appropriateness of services for people with HIV in your service area—and to work towards equal access to quality care for all people with HIV regardless of who they are or where they live

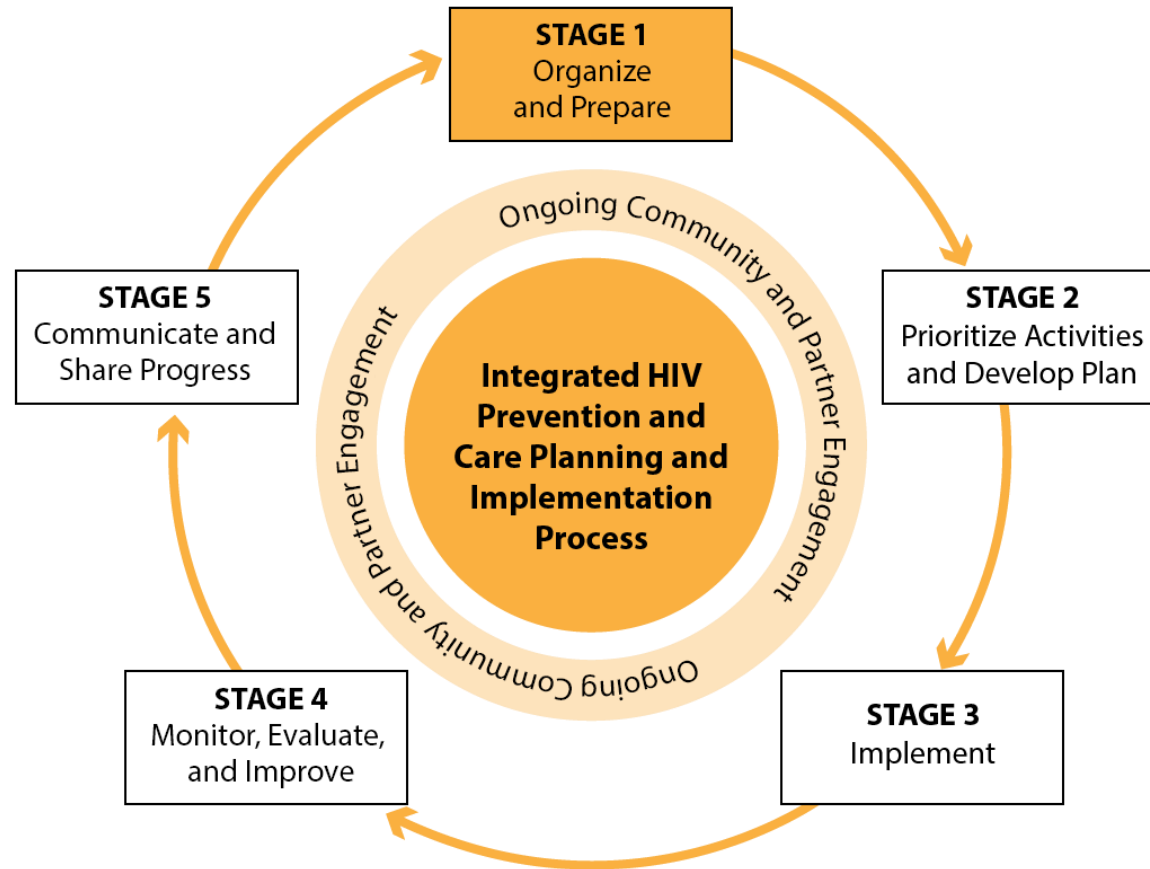


Adapted from Planning CHATT's [Quick Reference Handout 4.1 Needs Assessment - Putting the Pieces Together](#)

What a needs assessment contains

- ✓ Epidemiologic profile
- ✓ Resource inventory
- ✓ Profile of provider capacity and capability
- ✓ Estimate and assessment of unmet need
- ✓ Estimate and assessment of people with HIV who are unaware of their status
- ✓ Assessment of gaps in service needs

How do needs assessments fit into integrated planning?



Part A Expectations

- HAB DMHAP recommends EMAs/TGAs align their needs assessment cycle with the Integrated HIV Prevention and Care Plan or with the three-year period of performance when possible.
 - If using the Integrated Plan needs assessment cycle, the comprehensive needs assessment should inform the Integrated Plan with focused assessments in the subsequent years.
 - If using the three year needs assessment cycle, the comprehensive needs assessment should inform the competitive application or year one of the three-year cycle with focused assessments in subsequent years.

Part B Expectations

- Planning is an essential part of determining how to use all available RWHAP Part B resources to provide a comprehensive system of high-quality HIV care and treatment. RWHAP Part B recipients are required to have a planning process that includes needs assessment, priority setting, and resource allocation activities as integral parts (Page 83 of Part B manual, 2022)
- While there is no specific info on frequency, the RWHAP legislation indicates:
 - Section 2617(b)(3) of the PHS Act requires the **state to submit a RWHAP Part B application that contains (in part) a determination of the needs of the population with HIV/AIDS in the state.**
 - Sections 2617(b)(2) and (b)(3) of the PHS Act **require the state to determine the size and demographics of the population of individuals with HIV/AIDS in the state, as well as the needs of such population.**
 - Section 2617(b)(8) of the PHS Act **requires the state to assess the needs of persons with HIV/AIDS unaware of their status through a comprehensive plan.**
 - Section 2621 of the PHS act requires that the state/territory **submit a detailed description of the severity of need and the manner in which the state/territory will use amounts received** under the EC component of the RWHAP Part B X07 award."

Discussion



The IHAP TAC can help!

- **New to Integrated Planning or Need a Refresher?**
 - Online Course: An Introduction to HIV Prevention and Care Planning
 - Access at: <https://targethiv.org/ihap/integrated-hiv-prevention-care-planning/module>
www.targethiv.org/ihap
- **Sustaining Community Engagement Learning Series Returns!**
 - Three part learning series on recruitment and retention in HIV planning bodies
 - First session on January 28 at 3 ET
 - Register at: <https://targethiv.org/calendar/part-one-successful-strategies-recruit-planning-body-members>
- **Visit our website at www.targethiv.org/ihap** for more information and resources



INTEGRATED HIV/AIDS PLANNING
TECHNICAL ASSISTANCE CENTER

Thank you!

ihaptac@jsi.com



This project is supported by the Health Resources and Services Administration (HRSA) of the U.S. Department of Health and Human Services (HHS) under grant number U69HA30144, Ryan White HIV/AIDS Program Integrated HIV Planning Implementation. This information or content and conclusions are those of the author and should not be construed as the official position or policy of, nor should any endorsements be inferred by HRSA, HHS or the U.S. Government.