

Gulf Coast Guide to Emergency Preparedness – Local Planning

Carin Martin

Ryan White Grant Administration Program Manager

Harris County Public Health, Houston, TX

Hurricane Katrina - 2005



Lessons Learned

- PLWH likely put their HIV-related health care last when they face extraordinary disasters like Katrina
- In emergency situations, local officials are pressed to meet immediate basic needs, such as housing, emergency medical care and transportation
- It's hard to plan when so much is unknown.
- Established networks help deliver services effectively during an emergency. Local agencies benefit greatly by having solid partnerships, often in the form of collaborative agreements or contracts, with Federal agencies.

Hurricane Harvey - 2017

- Harris County averaged 40 inches of total rainfall from Harvey, equivalent to 1.2 trillion gallons.
- At one point, nearly every stream, bayou and channel in Harris County was at or above its bank.
- 30% of the county submerged
- The Texas Department of Public Safety reports that there were 13 shelters open in the Houston MSA housing approximately 1,464 evacuees as of September 22. Outside of the metro area, there are 647 evacuees in 8 shelters.
- At the peak on August 31, there were 34,575 evacuees in shelters across Texas.
- State and federal agencies have performed 122,331 rescues and evacuations throughout Texas as of September 12.
- Another 5,249 pets and animals were rescued.



Hurricane Harvey Response

- 2 large City and County run shelters housed displaced residence through September 21, 2018
- Medical clinic and pharmacy staff by County Hospital system provided care at County run shelter
 - Medications made available to displaced Ryan White patients
- Less than 20 people identified as HIV+ served in NRG and GRB shelters
- Fewer than half a dozen Harvey related waivers submitted to Part A program

Planning When Skies Are Sunny

Houston EMA has several standards related to Emergency Preparedness.

Emergency Preparedness

Includes an annual Hazard Vulnerability Analysis (HVA) to identify potential hazards, threats, and adverse events and assess their impact on care, treatment, and services they must sustain during an emergency. The agency shall communicate hazards identified with its community emergency response agencies and together shall identify the capability of its community in meeting their needs. The HVA shall be reviewed annually.

Emergency Management Training

National Incident Management System (NIMS) courses developed by the Department of Homeland Security:

IS -100.HC – Introduction to the Incident command system for healthcare/hospitals

IS-200.HC- Applying ICS to Healthcare organization

IS-700.A-National Incident Management System (NIMS) Introduction

IS-800.B National Response Framework (management)

Emergency Preparedness Standards

Emergency Preparedness Plan

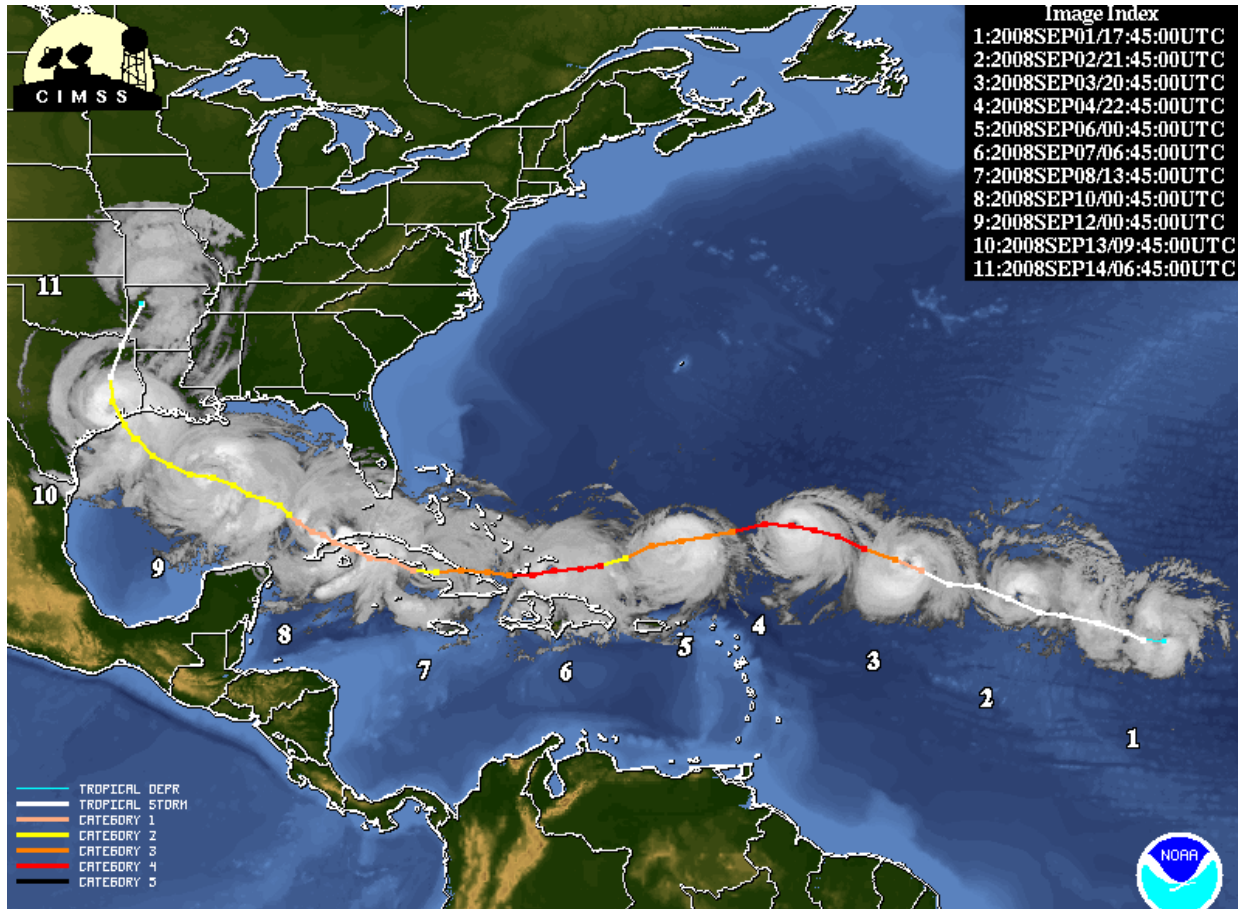
The emergency preparedness plan shall address the six critical areas for emergency management including

- Communication pathways
- Essential resources and assets
- patients' safety and security
- staff responsibilities
- Supply of key utilities such as portable water and electricity
- Patient clinical and support activities during emergency situations.

Emergency Management Drills

Agency shall implement emergency management drills twice a year either in response to actual emergency or in a planned exercise.

Planning as the Storm Approaches



- Part A program sends notifications to funded providers regarding storm related policy changes, and solicits information on changes in clinic operations
- Ryan White Planning Council and providers remind patients to fill prescriptions and shares ways to stay informed after the storm.

After Landfall

- On-going communication with providers
- Sharing information relevant on provider operational status to Ryan White Planning Council
- Sharing information on status of non-Ryan White support services such as area shelter operations, area pharmacy operations, and storm related donations
- Frequent updates with HRSA project officer

When Nothing Goes As Planned

- Damage to provider facilities
- Transportation and traffic disruptions
- Impact of stigma on displaced clients

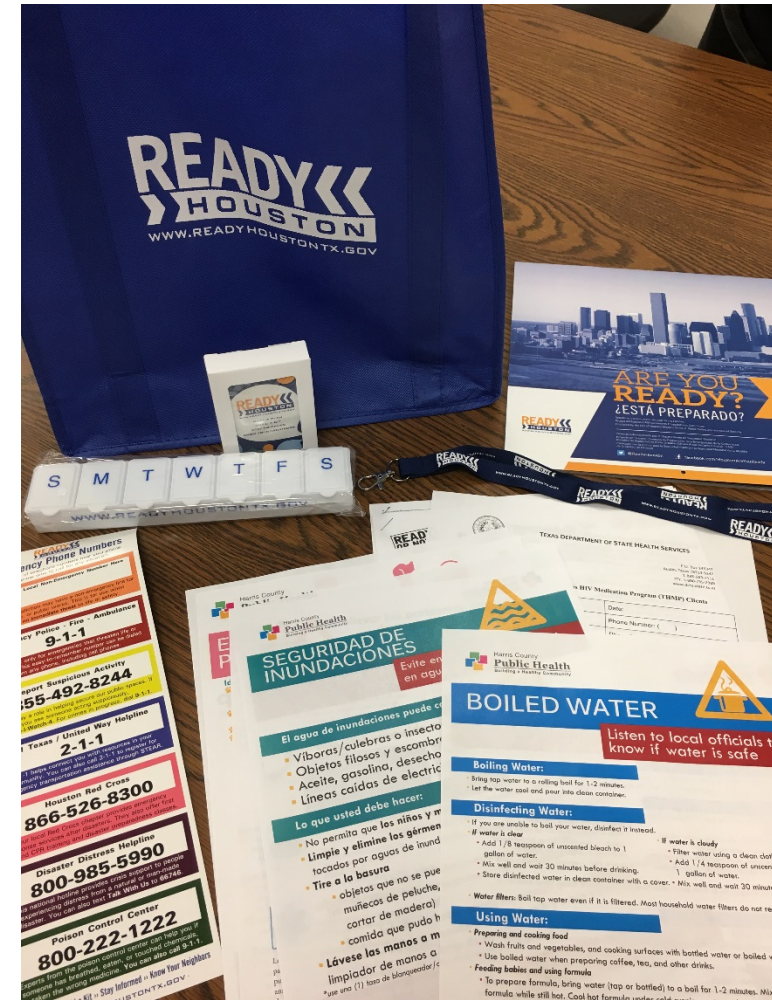
Refining Our Plan

- Annual assessment of Hazard Vulnerability is required for all Part A funded providers, per Standards of Care
- Ensuring Part A administrative alignment with County Health Department Preparedness activities
- Identifying opportunities to better engage and prepare consumers
- Taking advantage of funding and capacity building activities that come after the storm

Consumer Emergency Preparedness Resources

During 2018 the Houston Ryan White Planning Council hosted 10 consumer sessions in partnership with the Houston Health Department, Harris County Public Health Ryan White Grant Administration, Harris County Office of Emergency Management and The Resource Group to provide Emergency Preparedness Training for the Houston HIV Community. Topics included:

- Food preparedness
- Preparing your pets
- HIV Information Network
- Games and giveaways to engage and reinforce ideas



Questions?

- **Carin Martin, MPA, Program Manager**
 - Harris County Public Health, Ryan White Grant Administration
 - carin.martin@phs.hctx.net