



# Venue-Based-Outreach Testing and Patient Navigation: *Advancing Linkage to Care*

**Katherine Conner, MPH**

*Patient Navigator*

*NO/AIDS Task Force*

*New Orleans, LA*

**Joseph Olsen, MPH**

*Counseling, Testing, and*

*Referrals NO/AIDS Task Force*

*New Orleans, LA*

# Disclosures

No relationships to disclose in relation to the data presented.



# 2020 NHAS Goals

- GOAL 1: REDUCING NEW HIV INFECTIONS  
1.A, 1.A.2
- --We offer testing at many locations at varied times to ensure accessibility for all schedules. We test at venue-based-outreach locations to expand our scope and reach marginalized communities.
- GOAL 2: INCREASING ACCESS TO CARE AND IMPROVING HEALTH OUTCOMES FOR PEOPLE LIVING WITH HIV  
2.A, 2.A.1, 2.A.2
- --Seamless linkage to care through instant referrals to the patient navigator and rapid HIV test results.

# Testing, Testing Everywhere



# A Snapshot Of The Numbers

## HIV in Louisiana

- Louisiana ranks 2nd in the nation for estimated HIV case rates when comparing all 50 states
- New Orleans ranks 3<sup>rd</sup> in HIV case rates among major metropolitan areas in the United States

\*2015 4<sup>th</sup> Quarter Report, Vol 13, No. 4. Louisiana Office of Public Health

### **NO/AIDS Data:**

- 2011 – 2,785 HIV Tests
- 2012 – 3,131 HIV Tests
- 2013 – 4,647 HIV Tests
- 2014 – 5,710 HIV Tests
- 2015 – 8,355 HIV Tests

Consistent 2% positivity rate



# Conventional HIV Testing Prior to 2013

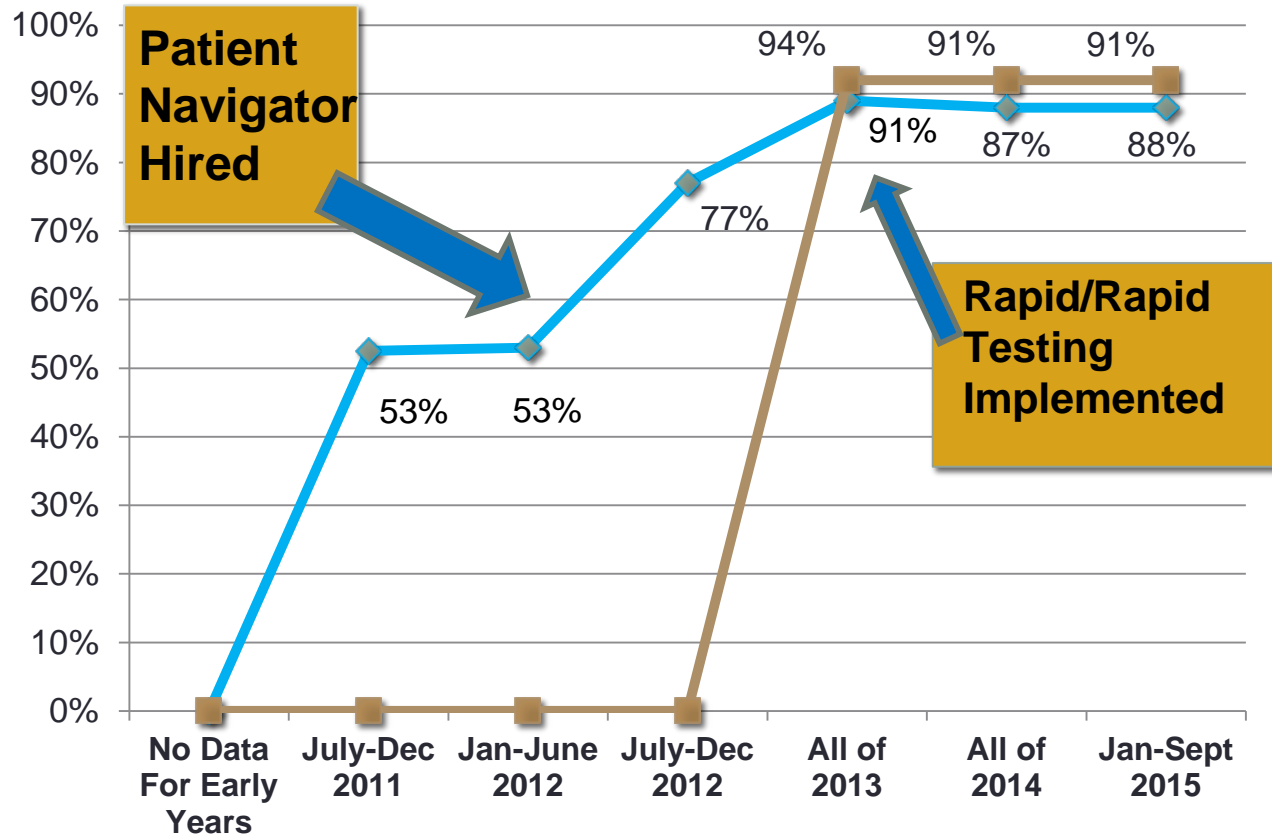
- **Test 1:** Rapid oral HIV test offered at clinics and venues
- **Test 2:** Western Blot confirmatory test – sample taken same day. Took at least two weeks to process/notify the client of result.



# Rapid/Rapid HIV Testing

- **Test 1:** Rapid finger-stick test (offered at clinics and venues)
- **Test 2:** Second rapid finger-stick test (made by a different manufacturer) Administered only minutes after a positive result from “Test 1”

# Agency Linkage-to-Care Rates



- ◆ Percent of Newly Diagnosed Positive Clients Linked to Care <90 Days - LOPH
- Percent of Newly Diagnosed Positive Clients Linked to Care - NATF/CC



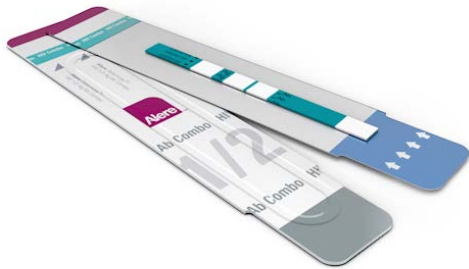


# Increase in Linkage!

- Prior to implementing rapid/rapid testing, we faced an average linkage time of 6 weeks from diagnosis because of the delay of conventional confirmatory testing, i.e. Western Blot.
- Now with rapid/rapid testing, of the linked newly diagnosed clients, 94% were within 60 days and 70% 30 days.

# Benefits of a Patient Navigator Using a Rapid/Rapid Algorithm

- **Benefits of Having Our Patient Navigator:**

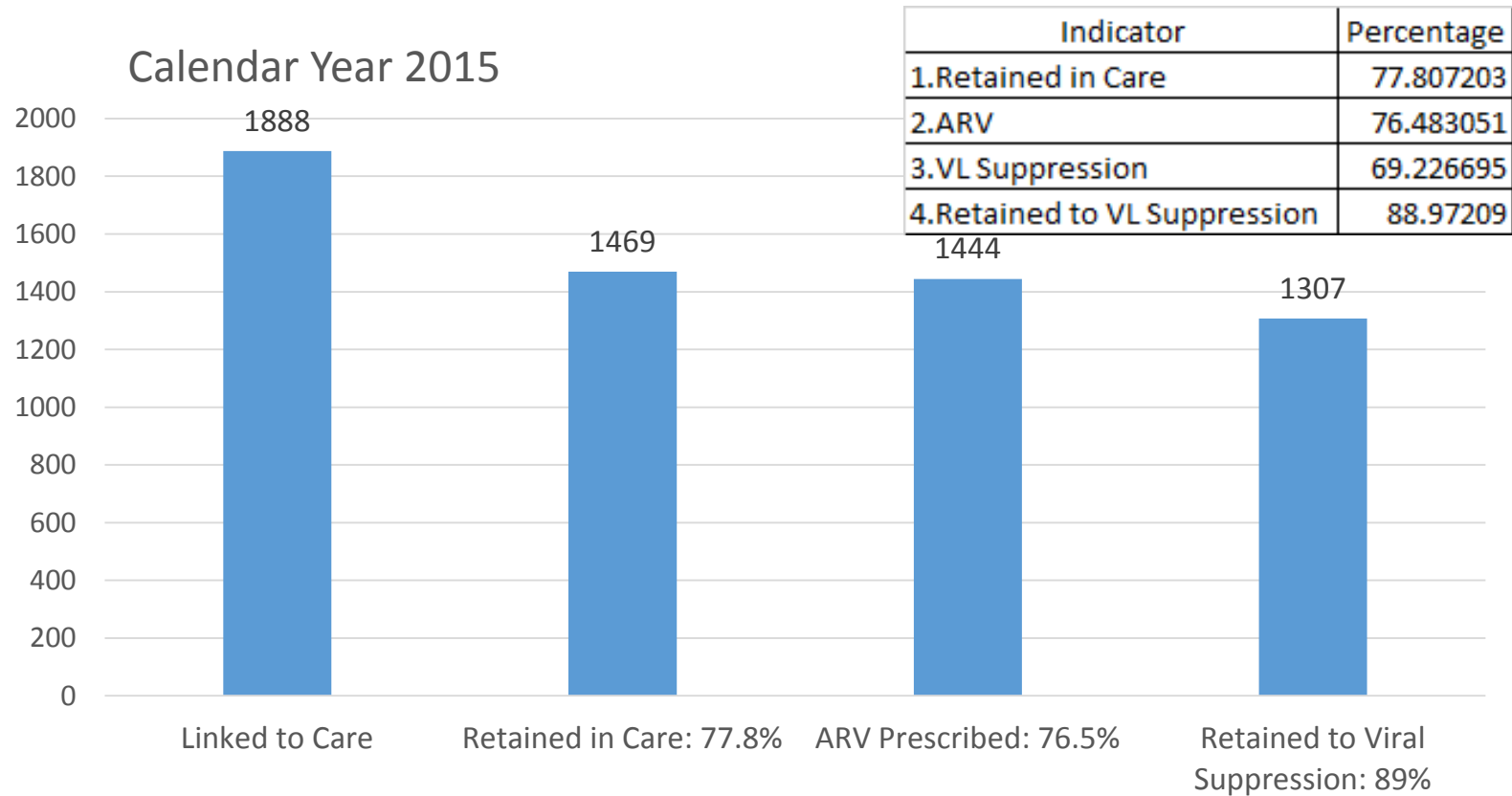


## **Benefits of a Rapid/Rapid Algorithm:**

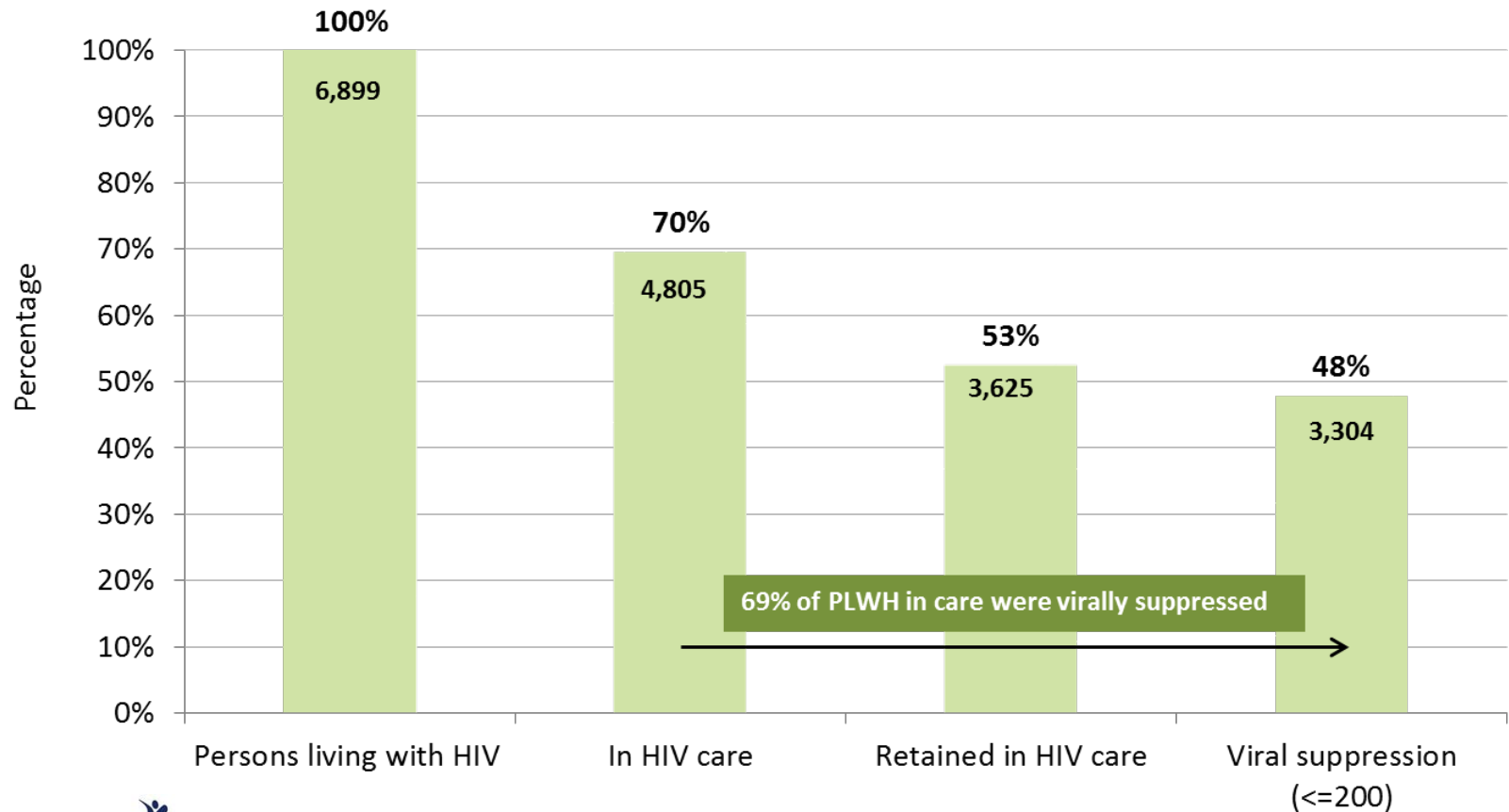
- Client leaves initial HIV testing session with a “proof of diagnosis”
- Will help meet “Indicator 4” from National HIV/AIDS Strategy 2020
- Patient Navigator can contact/meet clients in just minutes-to-hours after positive results to set up an appointment for enrollment in services and linkage-to-care



# CrescentCare's Continuum-of-Care

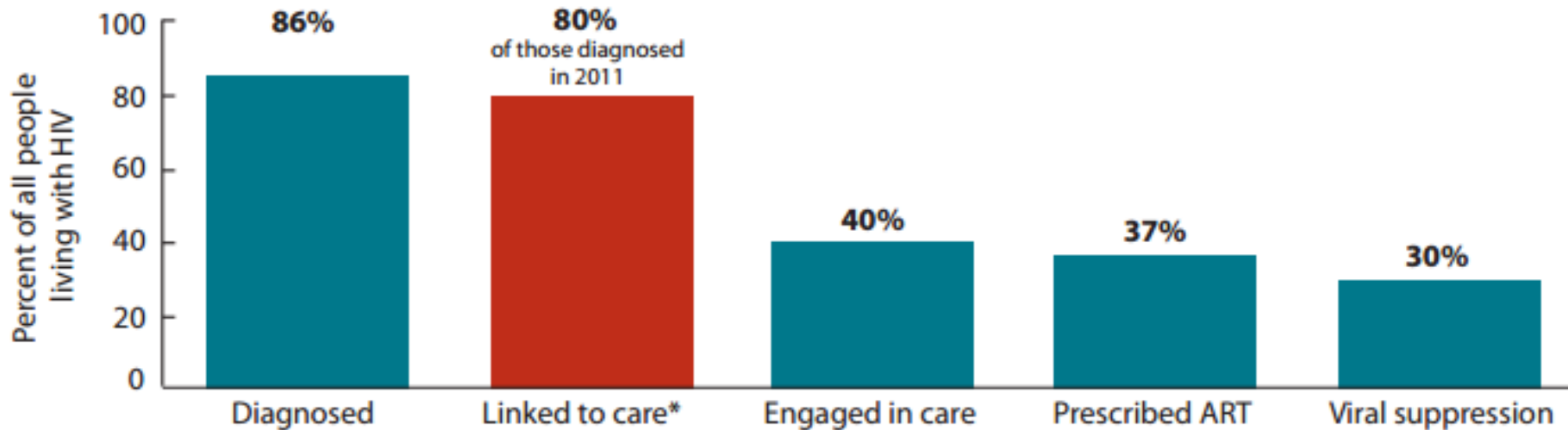


# HIV Care Continuum - State



# HIV Care Continuum - National

## Example 1: Prevalence-Based HIV Care Continuum, 2011



\* Linkage to care measures the percentage of people *diagnosed with HIV in a given calendar year* who had one or more documented viral load or CD4+ test *within three months of diagnosis*. Because it is calculated differently from other steps in the continuum, it cannot be directly compared to other steps and is therefore shown in a different color. See Table 1 on page 4 for more details.

Source: CDC. Vital Signs: HIV Diagnosis, Care, and Treatment Among Persons Living with HIV — United States, 2011. *MMWR*. 2014;63(47):1113-1117.

# Patient Navigator: A Hybrid Employee

- **Benefits of Hybrid Patient Navigator:**

- Intimate knowledge of prevention, case management and medical departments - better experience for client
- Red carpet treatment for clients
- Expedited linkage for newly diagnosed positives and those that are very sick.

- **Key Inputs:**

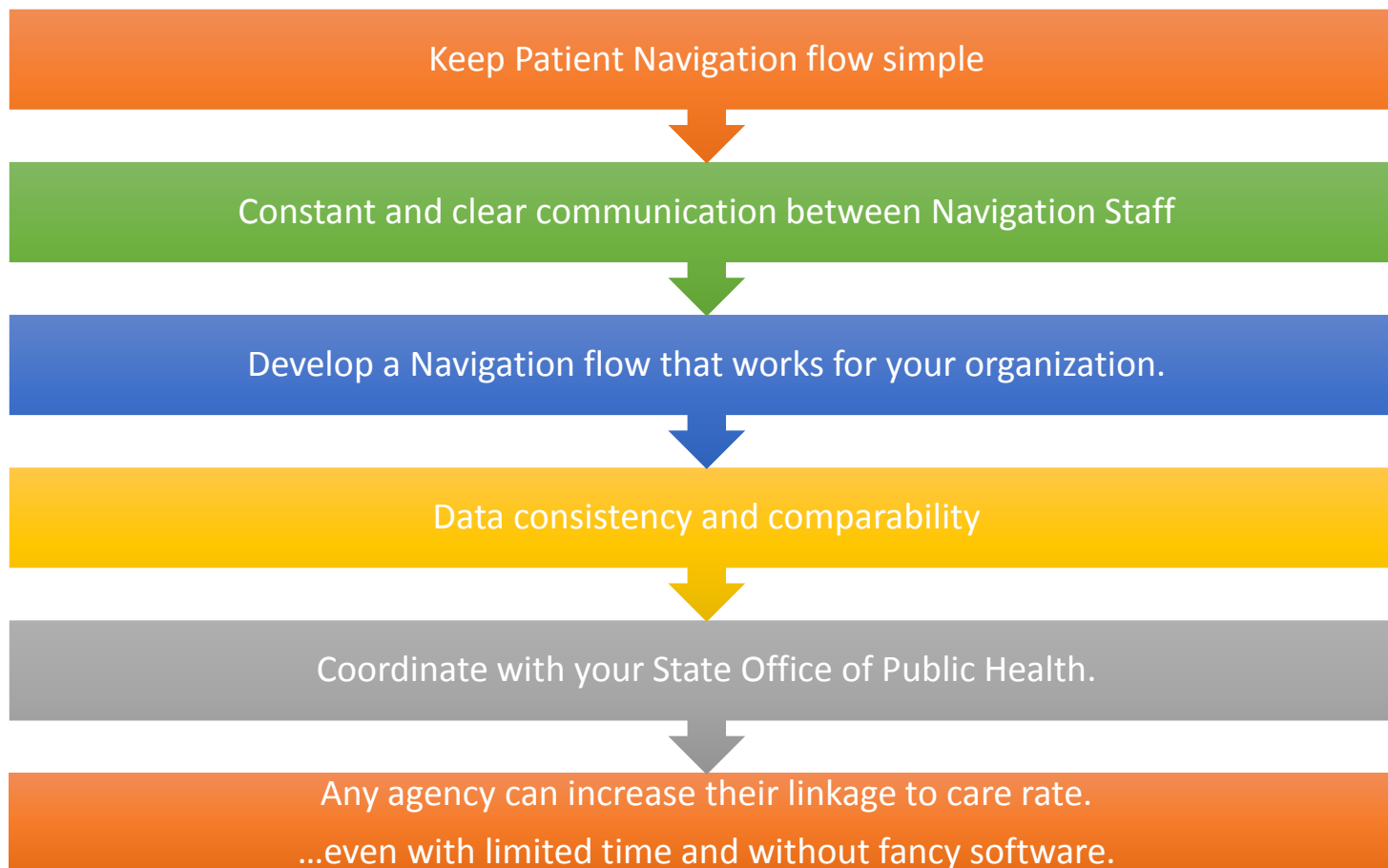
- Collaboration - Prevention & Medical Departments as well as State Disease Intervention Specialists
- Patient Navigation cell phone
- Intake paperwork
- Secure server allows for database sharing and follow up
- Client centered flex-time
- Training and Re-training counselors – including Patient Navigator

# Challenges & Action Steps





# Things We Have Learned





# Thank you!

## Questions?

[Katherine.Conner@crescentcarehealth.org](mailto:Katherine.Conner@crescentcarehealth.org)

[Joseph.Olsen@crescentcarehealth.org](mailto:Joseph.Olsen@crescentcarehealth.org)

