

***Women & Girls: Taking on Behavioral Health, HIV, and Hepatitis for Better Health Outcomes***

**Alton J. King, MBA**

*Public Health Advisor (SAMHSA/CSAT/HSB/HIV)*



# Disclosures

Presenters have no financial interest to disclose.

This continuing education activity is managed and accredited by Professional Education Services Group in cooperation with HSRA and LRG. PESG, HSRA, LRG and all accrediting organization do not support or endorse any product or service mentioned in this activity.

PESG, HRSA, and LRG staff has no financial interest to disclose.



# Learning Objectives

At the conclusion of this activity, the participant will be able to:

1. Discuss the feasibility of integrating IPV and trauma into your programmatic activities
2. Recognize medication-assisted treatment's (MAT) role to engage the opioid crisis
3. Recognize the importance of recovery and resiliency to sustain improved health outcomes

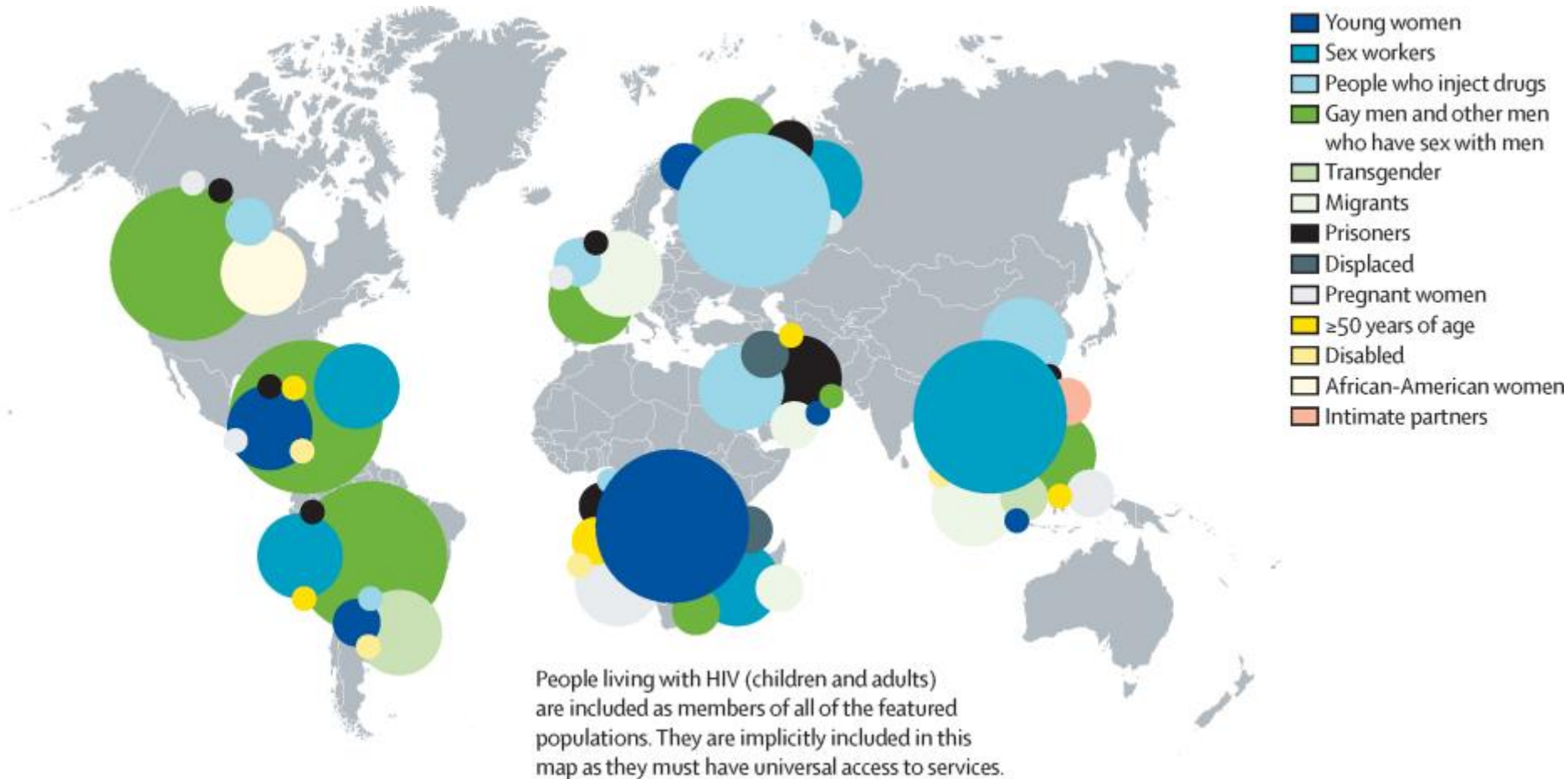


# SUSTAINABLE DEVELOPMENT GOALS

17 GOALS TO TRANSFORM OUR WORLD



# A Global Context (HIV)



- Young women
- Sex workers
- People who inject drugs
- Gay men and other men who have sex with men
- Transgender
- Migrants
- Prisoners
- Displaced
- Pregnant women
- ≥50 years of age
- Disabled
- African-American women
- Intimate partners

The Lancet 2015 386, 171-218DOI: (10.1016/S0140-6736(15)60658-4)

# A Call to Action - 2020

90%

of all



living with HIV will  
know their HIV  
status

90%

of all



living with HIV will  
receive sustained  
antiretroviral  
therapy

90%

of all



receiving  
antiretroviral therapy  
will have durable viral  
suppression



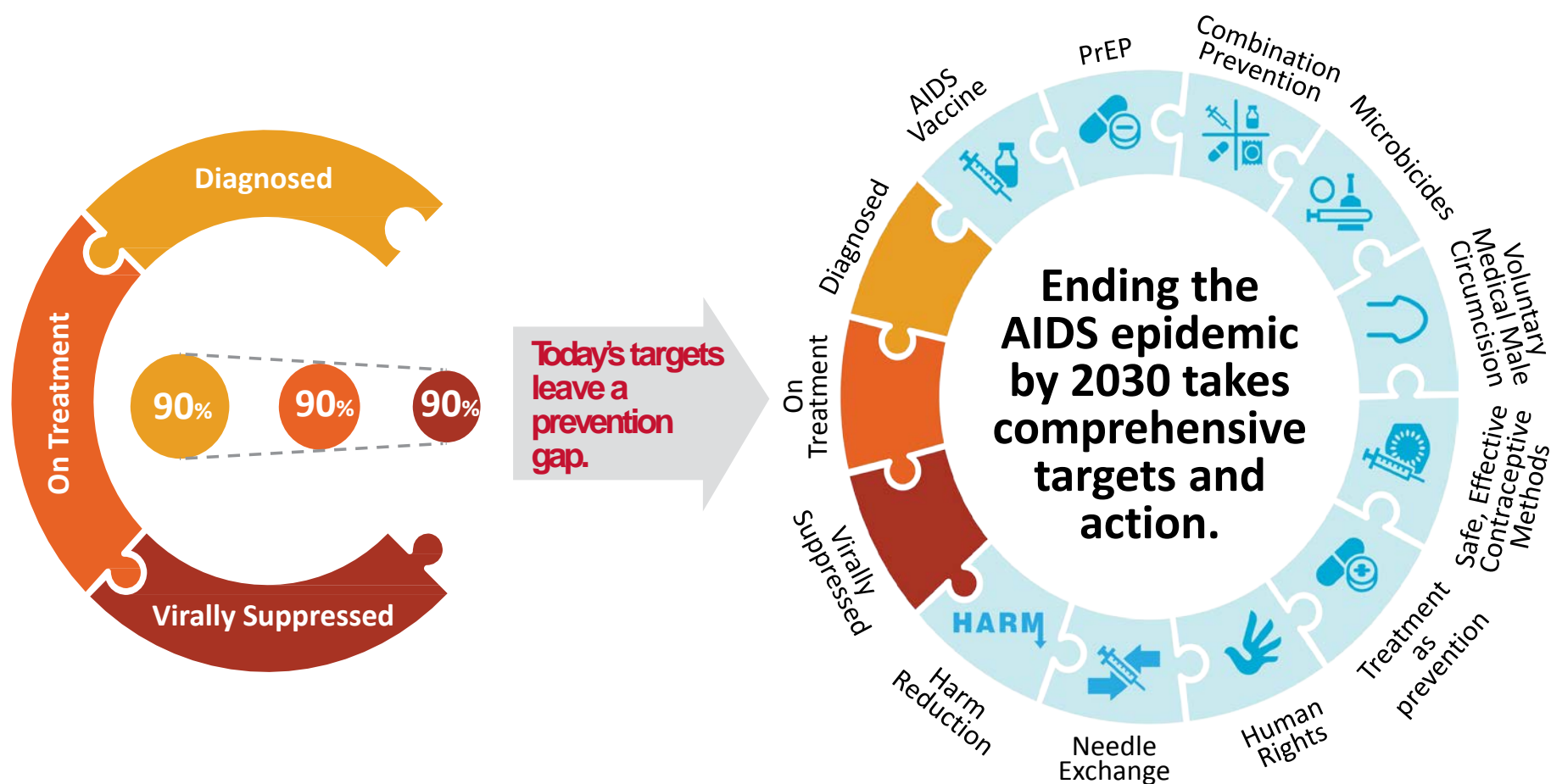
## Fast-Track Targets

by 2020 **90-90-90** (*Treatment*) **500,000** (*New infections*) **0** (*Discrimination*)

by 2030 **90-90-90** (*Treatment*) **200,000** (*New infections*) **0** (*Discrimination*)

# Yet, Action Still Misses ...

## UNAIDS 2014 Targets for 2020



Px Wire: A Quarterly Update on HIV Prevention Research | Volume 7 | No.4 | October–December 2014

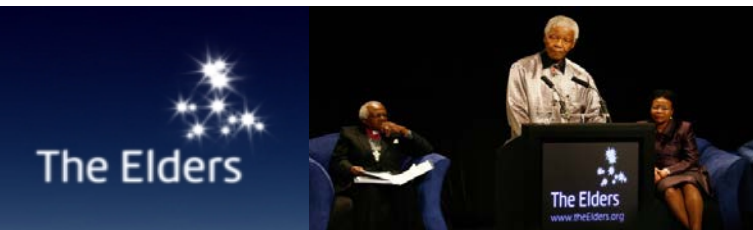


# The Elders Speak Volumes



Archbishop Desmond Tutu  
International Women's Day 2016  
(March 6)

*"But If we hold back women, we **hold back our societies**. If we allow women to be women, and let them use the gift that God has given to them, our communities will **flourish**."*







# Globally, A Burden on Women

- Women comprise **51%** (**17.8 million**) of PLWHAs
- **HIV/AIDS** is the leading cause of death among women of *reproductive age* (15 – 49)
- **Young women** and **adolescent girls** account for:
  - **58%** of all new HIV infections among young people
  - **60%** of all young people living with HIV/AIDS
- Female sex workers are **~14x** more likely to be infected than other women of reproductive age

UNAIDS, 2015 estimates from the AIDSinfo online database.\*; Stefan Baral et al. (15 March 2012)



# Universal Factors for Women

- Gender-based (GBV) and intimate partner violence (IPV)
- Gender inequality and discrimination
  - *Inclusive of unequal **cultural**, **social**, and **economic** status*
- Women living with HIV often experience violence due to their HIV status, including violations of their sexual and reproductive rights
- Lack of access to healthcare services
- Discriminatory criminal laws linked to HIV

# Speaking in #hashtags (U.S.)

A social conversation on domestic violence\*

*Domestic violence* is one of many forms of **IPV** or **GBV**



These are the key themes that emerged from an in-depth analysis of the hashtag dataset collected Sep. 8 to Dec. 1, 2014.

\* Social conversation via Twitter covering the period September 8 – December 1, 2014  
<http://www.bigmountaindata.com/whystayed-whyleft-a-data-analysis/>



# Realities for U.S. Women

- Experiencing the substance abuse, violence, and HIV/AIDS (**SAVA**) syndemic ↑ (**nearly 7x**) the likelihood of depressive symptoms
- Black and Latina women are disproportionately affected by HIV and IPV
  - *40.4% of reported lifetime IPV and 80% of new HIV infections*
- Women account for 20% of new HIV infections
  - *African Americans constituted 63% of women diagnosed*
- Blacks and Latinas represent 28% of all women but account for **80%** of HIV cases among women

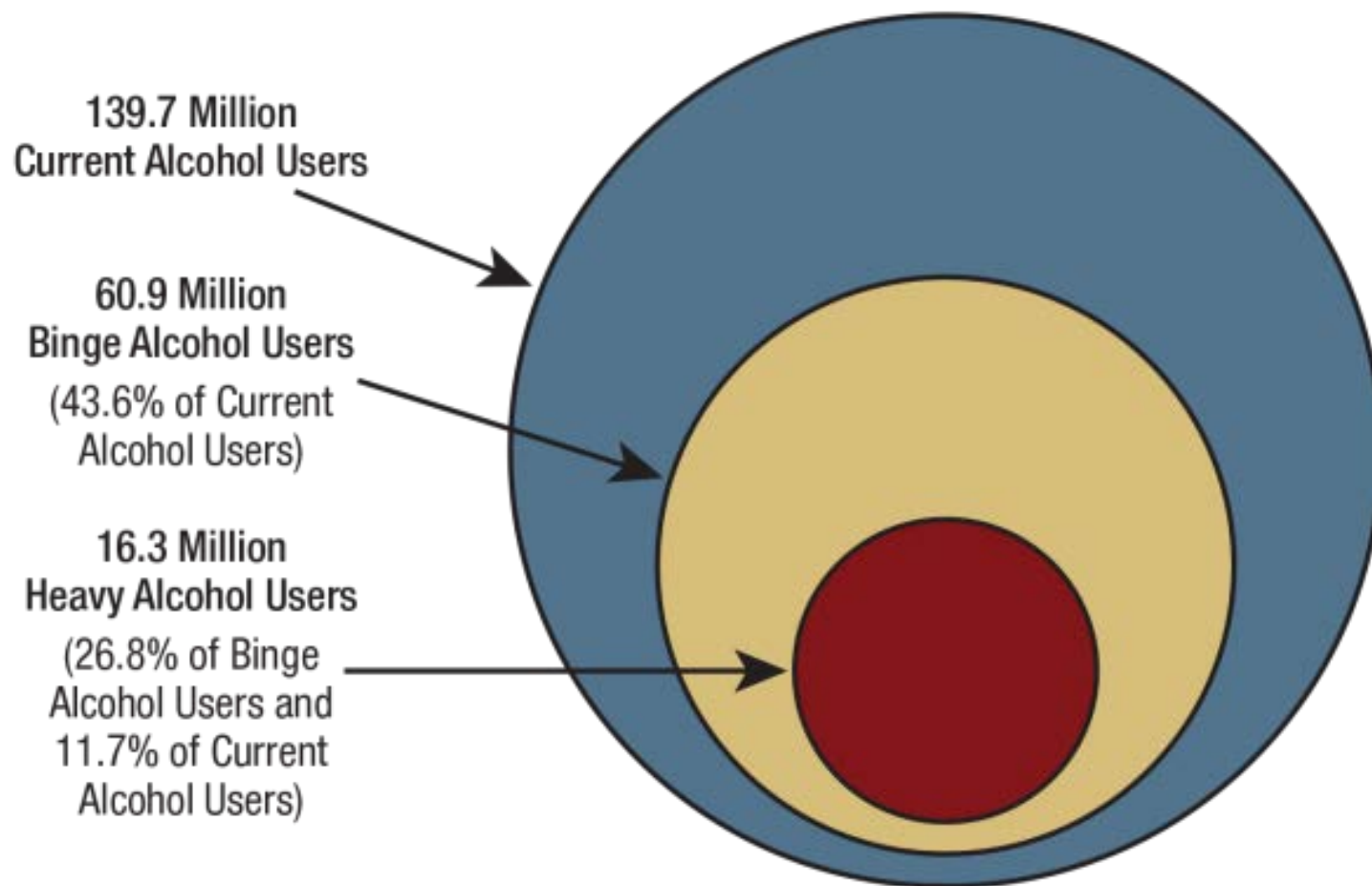
Illangasekare, 2013; Morales-Aleman et. al, 2014; Chen et al., 2013; U.S. Centers for Disease Control and Prevention, HIV Surveillance Report 2013

# A Sampling of Substances





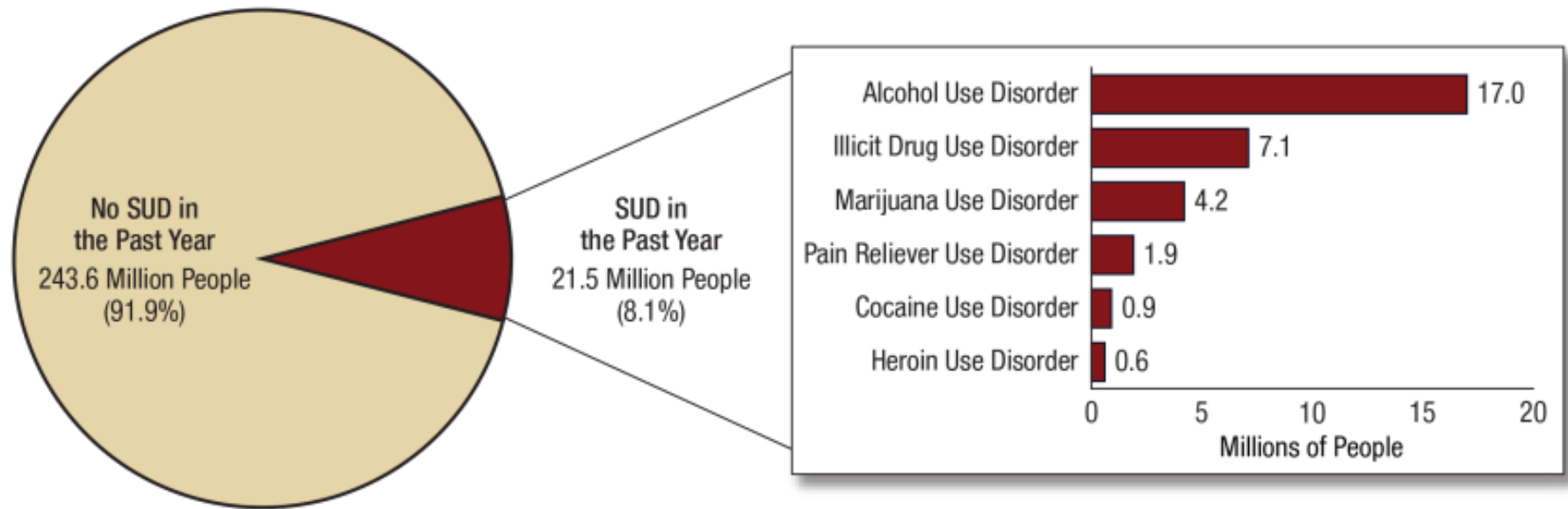
# 300+ million Americans, yet ...



2014 National Survey on Drug Use and Health (NSDUH; SAMHSA)

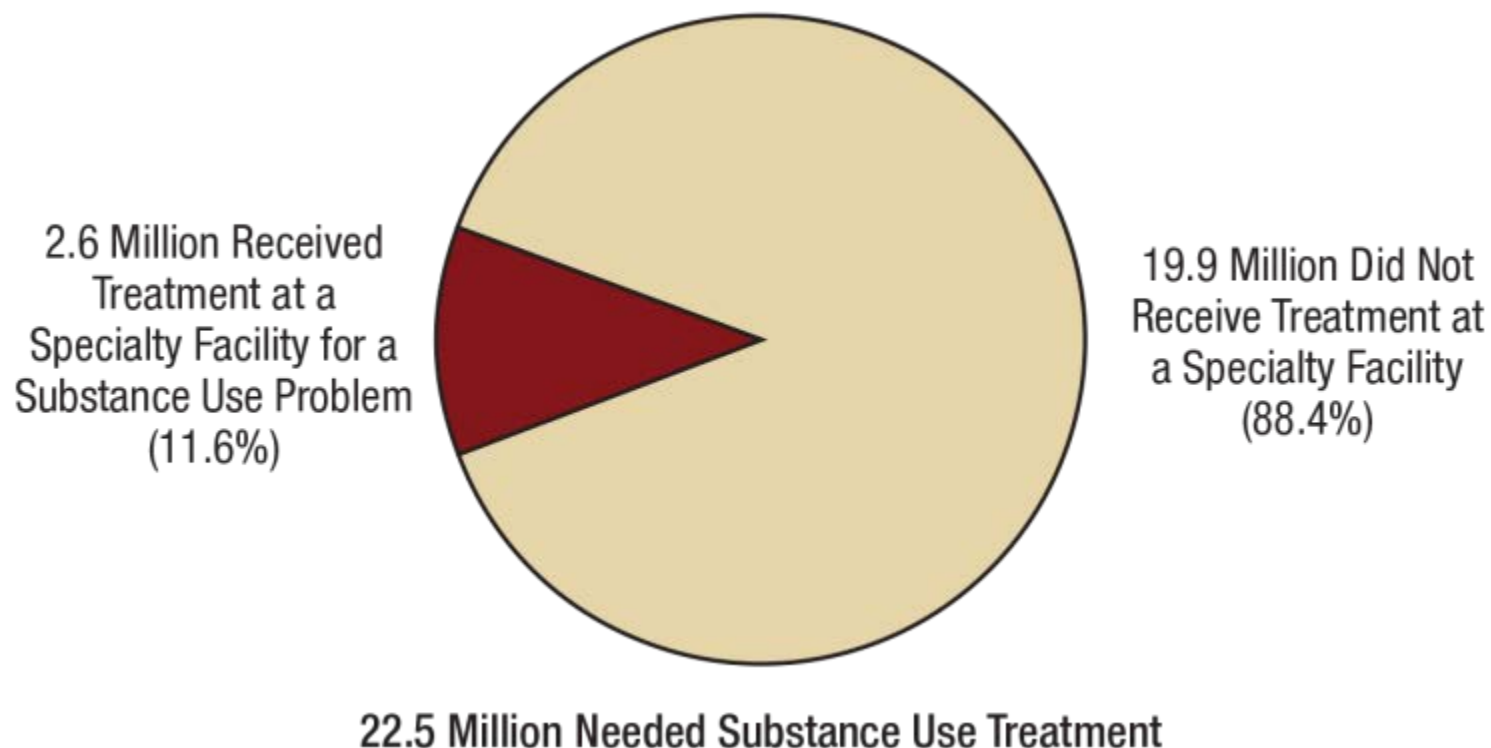


# Substance(s) of Choice in SUDs



2014 NSDUH (SAMHSA)

# A Gap in SUD Treatment Exists



2014 NSDUH (SAMHSA)

# TCE-HIV Engages SUD and HIV

Since 2000, the TCE-HIV program has:

- ❑ Engaged **over 100,000** clients in SUD treatment
- ❑ Established the **HIV status** for 40,000+ clients
- ❑ Supported 13,000+ clients in **HIV counseling and treatment** services
- ❑ Supported nearly **12,000 clients** in HIV case management services and **18,000 clients** in HIV-related medical care
- ❑ Delivered **HIV/AIDS education** to 30,000+ clients

All TCE-HIV programs through February 2015

# Changing Lives for Clients

Measure Type	# Valid Cases	% at Intake	% at 6-months	% ( $\Delta$ ) Change
<b>Abstinence:</b> No alcohol or illegal drugs	9,534	30.0	52.5	<b>74.9</b>
<b>Stability in Housing:</b> had a permanent place to live in the community	9,551	43.5	46.8	<b>7.6</b>

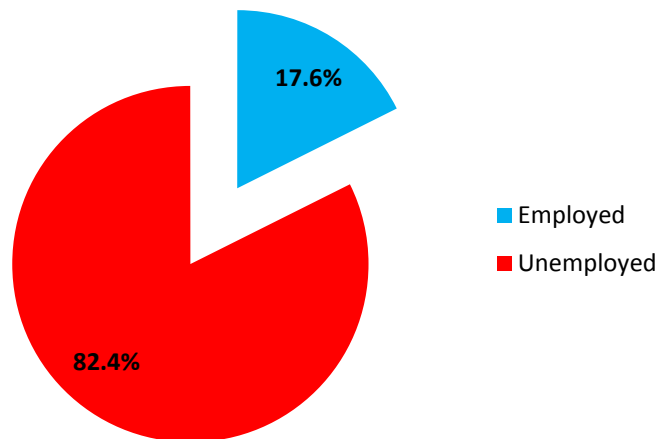
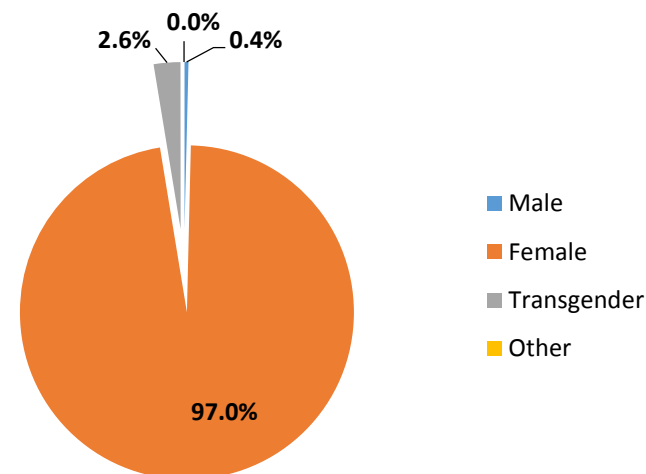
TCE-HIV program (FY12 & FY13) as of February 2015

Measure Type	# Valid Cases	% at Intake	% at 6-months	% ( $\Delta$ ) Change
Anxiety	1,775	61.8	47.6	<b>-23.0</b>
Depression	1,776	58.2	44.3	<b>-24.0</b>
Injected illegal drugs	1,787	4.5	2.8	<b>-38.3</b>
Had unprotected sexual contact	543	72.4	64.6	<b>-10.7</b>
Had unprotected sexual contact with someone high on any substance	298	30.2	18.5	<b>-38.9</b>

TCE-HIV: Minority Women program (FY13) as of February 2015

# A Snapshot of Who We Serve

- Primarily Black (41.5%) and Latino (43.6%)
- 1 in 3 possess HS/GED
- **96.3% below FPL (200%)**



TCE-HIV: Minority Women program (FY13) as of February 2015

# POTUS Reminds Us That



President Barack H. Obama  
World AIDS Day 2015  
(March 6)

*“... ending the epidemic also requires a focus on prevention. Especially when it comes to empowering our **young women and girls** to protect their own health, secure economic opportunity, and pursue their dreams.”*



# Let's Get Trauma-informed!!

- **Realizes** widespread impact of trauma and paths for recovery;
- **Recognizes** signs and symptoms of trauma;
- **Responds** by integrating trauma knowledge; and
- Seeks to actively resist **re-traumatization**



SAMHSA's Concept of Trauma and Guidance for a Trauma-Informed Approach



# A Game Changer for Women ...

When trauma-informed care (TIC) is integrated into SUD treatment, it can:

- ✓ **enhance** HIV care retention and medication adherence
- ✓ **improve** the health/wellness of people living with or at risk for HIV and have histories of trauma
- ✓ **reduce** disparities among communities of color
- ✓ **enrich** the quality of life for communities of color

SAMHSA's TIP 57: Trauma-Informed Care in Behavioral Health Services



# Engaging the SAVA Syndemic

- **Violence Intervention To Enhance Lives (VITEL)**
  - SMAIF **funded** (awarded 2015, continuation in 2016)
  - Novel intervention incorporating **IPV screening** with concurrent **SUD screening** and **follow-on referral services**
  - A 2013 White House report **reaffirms** attention on trauma, HIV, and violence against women & young girls
- **To-date results**
  - **>500 clients** and nearly **100 staff** educated on IPV
  - **22.4%** clients screened positive for IPV (past 30 days)
  - **93%** clients referred to trauma-informed services

Secretary's Minority AIDS Initiative Fund (SMAIF) provides supplemental funding to existing TCE-HIV: Minority Women (TFY13) grantees per funding opportunity announcements (FOAs) TI-15-013 and TI-16-010



# Rounding Out the Circle of Care

Over 1,600 women of color and clients have sustained their HIV negative status as a result of this program:

- ✦ **Provides SUD treatment**
- ✦ **Provides TIC services in a safe and trusting environment**
- ✦ **Provides HIV and Hepatitis testing**
- ✦ **Provides coordinated care for SUD, HIV, Hepatitis, and trauma**
- ✦ **Maintains overall health and wellbeing**



TCE-HIV: Minority Women program (FY13)

# Don't Forget Program Evolution

- Require IPV screening
- Support MAT
- Link and refer clients for PrEP and PEP
- Require Hepatitis A + B vaccinations
- Support syringe services programs (*sans needles, injecting equipment*)



Latest FOA, TI-16-011, updated for FY16 & beyond; Care Coordination (Center of Excellence in Care Coordination)

# A Friendly Reminder That ...

*“Each of us has a role to play in giving every **man**, **woman** and **child** on Earth access to life-saving treatment and care.”*



President Barack H. Obama  
World AIDS Day 2012  
(December 1)



THANK YOU!!

[Alton.King@samhsa.hhs.gov](mailto:Alton.King@samhsa.hhs.gov)





# Obtaining CME/CE Credit

If you would like to receive continuing education credit for this activity, please visit:

<http://ryanwhite.cds.pesgce.com>

