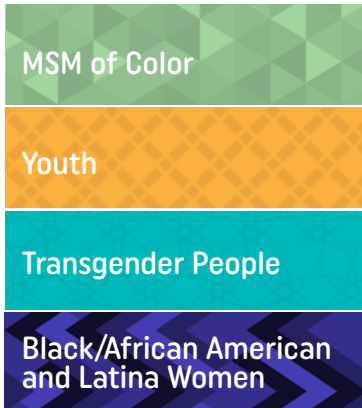


end +disparities

end+disparities ECHO Collaborative



The end+disparities ECHO Collaborative is a national initiative to reduce disparities in four disproportionately affected HIV subpopulations. These are: MSM of Color, Black/African American and Latina Women, Transgender People, and Youth. The 18-month collaborative aims to increase viral suppression in these four key subpopulations and increase local quality improvement capacities. The initiative is managed by the HRSA Ryan White HIV/AIDS Program Center for Quality Improvement & Innovation (CQII) and was developed using the Project Extension for Community Health Outcomes (ECHO) model and supported by the HRSA HIV/AIDS Bureau.



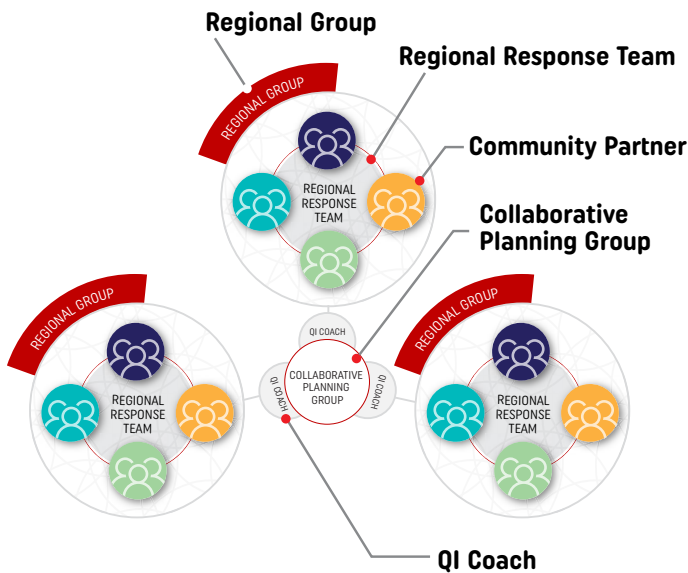
EXPECTATIONS OF PARTICIPANTS:

- Select one HIV subpopulation
- Implement a quality improvement project
- Submit viral suppression data every other month
- Join a Regional Group and attend Regional Group Meetings (1x per month)
- Join a subpopulation-specific Affinity ECHO Group and attend its Affinity ECHO Sessions (2x per month, 60 min each)
- Participate in four Learning Sessions

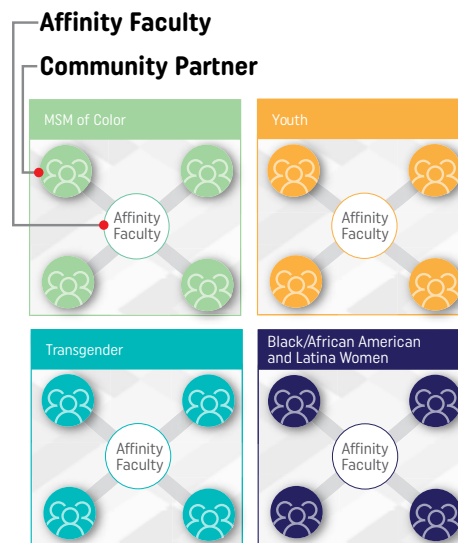
BENEFITS TO PARTICIPANTS:

- Improve viral suppression rates
- Align with HIV/AIDS Bureau clinical quality management expectations
- Strengthen partnerships and with other RWHAP recipients and subrecipients locally and across the country
- Increase quality improvement capacity of HIV providers and consumers

REGIONAL GROUP



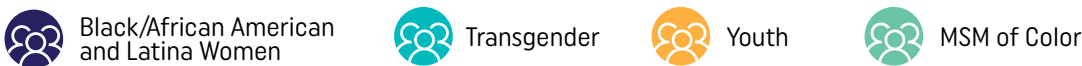
AFFINITY ECHO GROUPS



KEY TERMS:

- Community Partners:** individual RWHAP recipients/subrecipients
- Regional Group:** regionally-based group of Community Partners
- Regional Response Team:** leadership of the Regional Group formed by the Regional Group's Community Partners
- QI Coach:** a quality improvement expert who supports Regional Group activities
- Affinity ECHO Groups:** groups of Community Partners who participate in content-specific meetings that focus on a disparity subpopulation or Collaborative role
- Affinity Faculty:** a team of experts who help build specialized capacity to target disparity subpopulations

Community Partner



Vanguard Meeting	Learning Session 1 (2 Day In-Person)	Regional Group Meetings	Affinity ECHO Sessions	Learning Session 2 (Virtual)	Regional Group Meetings	Affinity ECHO Sessions	Learning Session 3 (Virtual)	Regional Group Meetings	Affinity ECHO Sessions	Learning Session 4 (Virtual)
MAR 2018	JUN 2018	JUN-OCT	MAY-OCT	NOV 2018	NOV-MAR	DEC-MAR	APR 2019	APR-SEP	MAY-AUG	SEP 2019